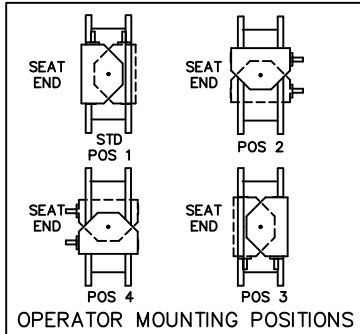
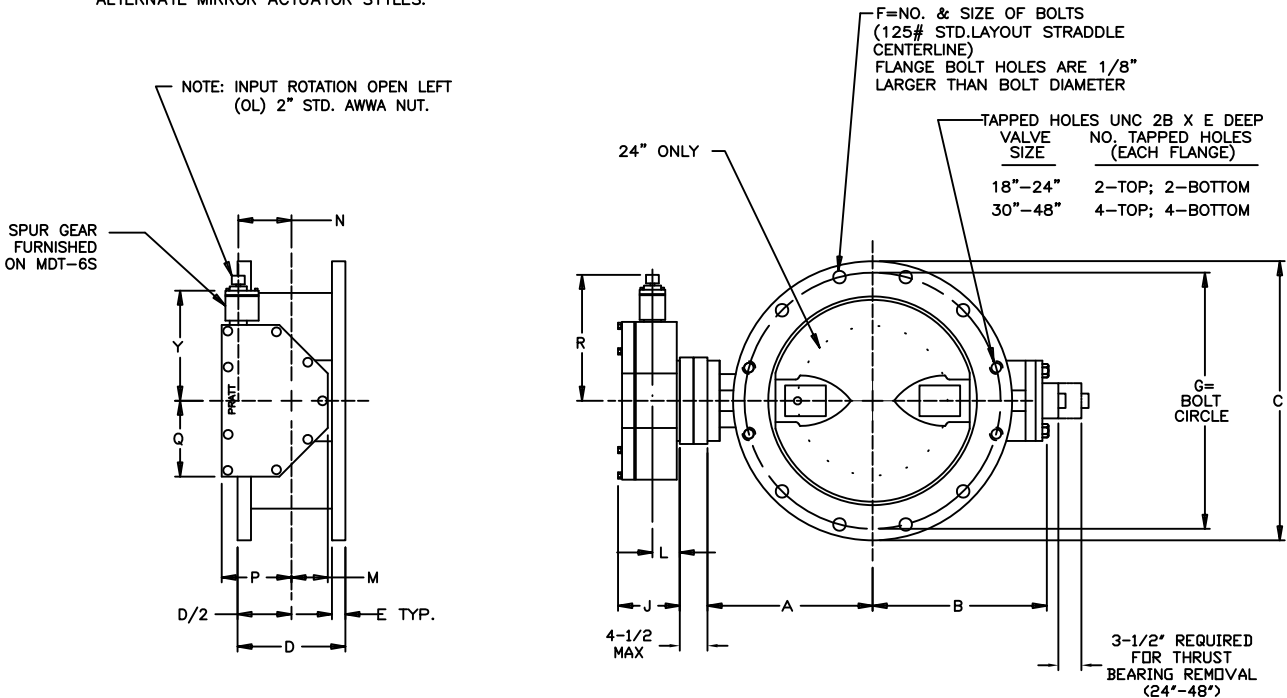


ACTUATOR SIZE	J	L	M	N	P	Q	R	Y	NUMBER OF TURNS
MDT-2S	4-11/16	2	2-1/8	2	4-1/2	4-1/4	7-5/8	4-1/2	32
MDT-3S	5-5/8	2-7/16	3-1/4	3-5/32	5-5/8	5-7/16	9-3/8	6-5/8	30
MDT-4S	6-3/8	2-27/32	3-3/8	4	7-5/16	6-3/4	10-5/8	7-5/8	40
MDT-5	7-9/16	3-15/32	4-1/2	5-1/2	8-3/4	10-1/8	17	13-1/2	44
MDT-5S	8-5/16	3-15/16	5-1/2	7	10-1/2	15-15/16	19-7/8	15-11/16	136
MDT-6S	10-3/16	5-1/16	7	8-1/4	12-5/8	19	26-1/2	22-1/4	215



VALVE SIZE	A	B	C	D*	E	F	G	ACT. SIZE
4	5-1/2	3-1/2	9	5	3/4	8--5/8	7-1/2	2S
6	6-1/2	5-1/4	11	5	1	8--3/4	9-1/2	2S
8	7-3/4	6-1/2	13-1/2	6	1-1/8	8--3/4	11-3/4	2S
10	9	10	16	8	1-3/16	12--7/8	14-1/4	2S
12	10-1/2	11-1/2	19	8	1-1/2	12--7/8	17	2S
14	11-7/8	13	21	8	1-3/8	12--1	18-3/4	3S
16	13-1/2	14-1/2	23-1/2	8	1-7/16	16--1	21-1/4	3S
18	14-3/8	15-3/8	25	8	1-9/16	16--1-1/8	22-3/4	4S
20	16	17-1/2	27-1/2	8	1-11/16	20--1-1/8	25	5
24	18-5/8	18-5/8	32	8	1-7/8	20--1-1/4	29-1/2	5
30	21-1/2	24-3/4	38-3/4	12	2-1/8	28--1-1/4	36	5
36	25-7/16	28-1/4	46	12	2-7/16	32--1-1/2	42-3/4	5S
42	29-7/8	32-7/8	53	12	2-5/8	36--1-1/2	49-1/2	6S
48	34-1/16	36-7/8	59-1/2	15	2-3/4	44--1-1/2	56	6S

- A. IGNORE SEAT SIDE DESIGNATION ON BFV SIZE 3" -20"
- B. CHECK WITH FACTORY WHEN SELECTING ALTERNATE MIRROR ACTUATOR STYLES.



NOTES:

- *ALL DIMENSIONS SHOWN IN INCHES. "D" DIMENSION $\pm 1/16$ " FOR 4" THRU 10" VALVES. "D" DIMENSION $\pm 1/8$ " FOR 12" THRU 48" VALVES.
- DIMENSIONS AND DRILLING OF END FLANGES CONFORM TO THE AMERICAN CAST IRON FLANGE STANDARDS, CLASS 125 (B16.1).
- (RECOMMENDATIONS FOR MATING FLANGES) WHERE INSULATING BUSHINGS ARE USED, IT IS NECESSARY THAT BOLT HOLES BE DRILLED OVERSIZE BY AN AMOUNT EQUAL TO TWO TIMES THE INSULATING SLEEVE THICKNESS TO MAINTAIN THE SAME MINIMUM CLEARANCE FOR BOLTS.
- ACTUATOR MOUNTED IN POSITION AS SHOWN.
- FOR USE WITH BUTTERFLY VALVE INDICATOR POST-STYLE G.
- VALVES MANUFACTURED IN ACCORDANCE WITH UNDERWRITERS LABORATORIES STANDARD UL-1091. LATEST EDITION.
- CAUTION: IT IS RECOMMENDED THAT VALVES BE INSTALLED INTO PIPING SYSTEM IN ACCORDANCE WITH AWWA M-11 TO PREVENT ANY UNDUE PIPING STRESS, DEFLECTION, OR BENDING THAT MAY EFFECT THE PERFORMANCE OF THE VALVE.
- VALVES MANUFACTURED AND TESTED IN ACCORDANCE WITH AWWA SPECIFICATION C-504 LATEST REVISION, CLASS 150B.

EXTERNAL DISTRIBUTION			
UL			

REV	DATE	DESCRIPTION	DWN	APP
5	5/5/23	ADDED POSITIO CHART & REVISED "J" DIMENSION	RTF	RF
4	6/5/12	ADDED 30"-48" & 5S & 6S	JTC	RCB

PRATT
MUELLER brand

GENERAL ARRANGEMENT DRAWING
GROUNDHOG VALVE FLNGED ENDS
MDT ACTUATOR UL LISTED

SCALE NONE DATE 6/12/06

DRAWN BY SR CHECKED BY JR

APPROVED GA=BORDER

DRWG. NO. GA-11602 REV 5 A/C