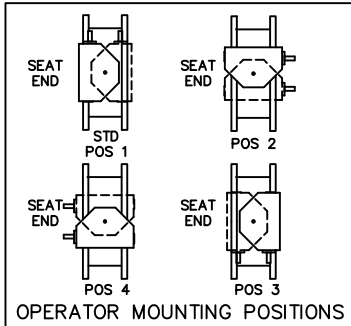
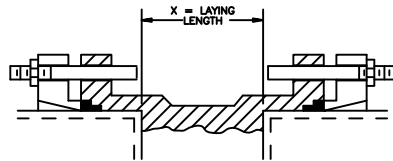
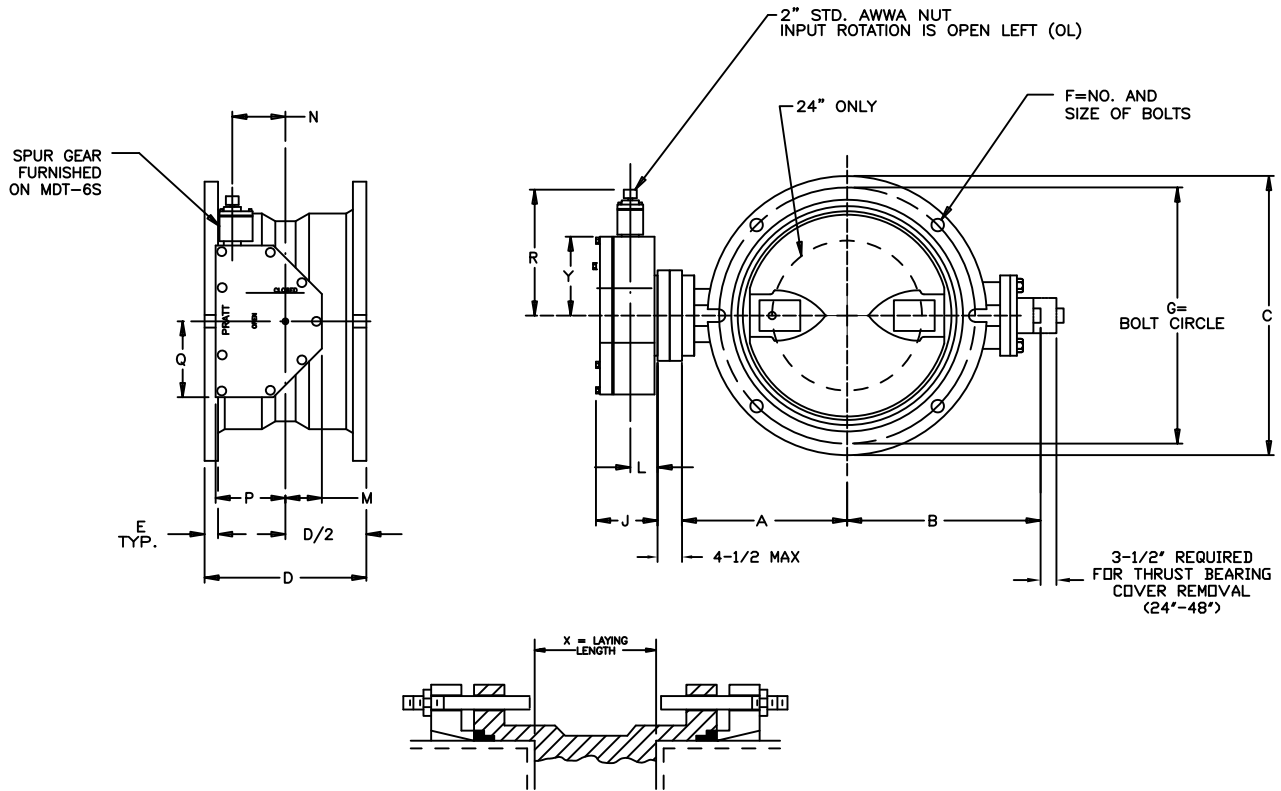


ACTUATOR SIZE	J	L	M	N	P	Q	R	Y	NUMBER OF TURNS
MDT-2S	4-11/16	2	2-1/8	2	4-1/2	4-1/4	7-5/8	4-1/2	32
MDT-3S	5-5/8	2-7/16	3-1/4	3-5/32	5-5/8	5-7/16	9-3/8	6-5/8	30
MDT-4S	6-3/8	2-27/32	3-3/8	4	7-5/16	6-3/4	10-5/8	7-5/8	40
MDT-5	7-9/16	3-15/32	4-1/2	5-1/2	8-3/4	10-1/8	17	13-1/2	44
MDT-5S	8-5/16	3-15/16	5-1/2	7	10-1/2	15-15/16	19-7/8	15-11/16	136
MDT-6S	10-3/16	5-1/16	7	8-1/4	12-5/8	19	26-1/2	22-1/4	215



- A. IGNORE SEAT SIDE DESIGNATION ON BFV SIZE 3" - 20"
- B. CHECK WITH FACTORY WHEN SELECTING ALTERNATE MIRROR ACTUATOR STYLES.

VALVE SIZE	A	B	C	D*	E	F	G	X	ACT. SIZE
4	5-1/2	3-1/2	9	8-1/8	1	4--3/4	7-1/2	3-1/8	2S
6	6-1/2	5-1/8	11	8-1/2	1-1/16	6--3/4	9-1/2	3-1/2	2S
8	7-3/4	6-1/2	13-1/4	8-5/8	1-1/8	6--3/4	11-3/4	3-5/8	2S
10	9	9-3/4	15-9/16	10	1-3/16	8--3/4	14	5	2S
12	10-1/2	11-3/8	17-15/16	10-1/2	1-1/4	8--3/4	16-1/4	5-1/2	2S
14	11-7/8	12-3/4	20-5/16	11-1/2	1-5/16	10--3/4	18-3/4	4-1/2	3S
16	13-1/2	14-1/2	22-9/16	12	1-3/8	12--3/4	21	5	3S
18	14-3/8	15-3/8	24-11/16	12-1/4	1-3/8	12--3/4	23-1/4	5-1/4	4S
20	16	17	27-3/32	12-1/2	1-1/2	14--3/4	25-1/2	5-1/2	5
24	18-5/8	18-5/8	31-9/16	13-1/4	1-5/8	16--3/4	30	6-3/8	5
30	21-1/2	24-3/8	39	18	1-13/16	20--1	36-7/8	10	5
36	25-7/16	28-1/4	45-7/8	22	2	24--1	43-3/4	14	5S
42	29-7/8	32-7/8	53	22	2	28--1-1/4	50-5/8	14	6S
48	34-1/16	37-1/8	59-7/8	24	2	32--1-1/4	57-1/2	16	6S



INSTALLATION DIAGRAM
NOTE: BOLTS, NUTS, GLANDS AND GASKETS FURNISHED BY OTHERS.

EXTERNAL DISTRIBUTION
UL

NOTES:

- *ALL DIMENSIONS SHOWN IN INCHES. "D" DIMENSION $\pm 1/16"$ THROUGH 10" VALVES, $\pm 1/8"$ FOR 12" AND LARGER VALVES.
- ACTUATOR MOUNTED IN POSITION AS SHOWN.
- FOR USE WITH BUTTERFLY VALVE INDICATOR POST-STYLE G.
- VALVES MANUFACTURED IN ACCORDANCE WITH UNDERWRITERS LABORATORIES STANDARD UL-1091, LATEST EDITION.
- CAUTION: IT IS RECOMMENDED THAT VALVES BE INSTALLED INTO PIPING SYSTEM IN ACCORDANCE WITH AWWA M-11 TO PREVENT ANY UNDUE PIPING STRESS, DEFLECTION, OR BENDING THAT MAY EFFECT THE PERFORMANCE OF THE VALVE.
- VALVES MANUFACTURED AND TESTED IN ACCORDANCE WITH AWWA SPECIFICATION C-504 LATEST REVISION, CLASS 150B.
- DIMENSIONS AND DRILLING OF END FLANGES CONFORM TO THE ANSI/AWWA C111/A21.11.

REV	DATE	DESCRIPTION	DWN	APP
5	5/5/23	ADDED POSITION CHART & REVISED "J" DIMENSION	RTF	RF
4	6/5/12	ADDED DIMS FOR 30"-48"	JTC	RCB
3	11/21/11	CORRECTED DIMS	CEM	JLI

PRATT
a Mueller brand

GENERAL ARRANGEMENT DRAWING
GROUNDHOG VALVE MECHANICAL
JOINT ENDS MDT ACTUATOR
UL LISTED

SCALE NONE DATE 6/12/06
DRAWN BY SR CHECKED BY JR
APPROVED GA=BORDER
DRWG. NO. GA-11603 REV 5