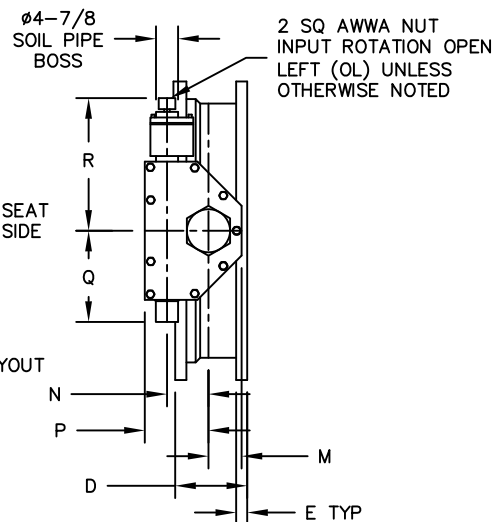
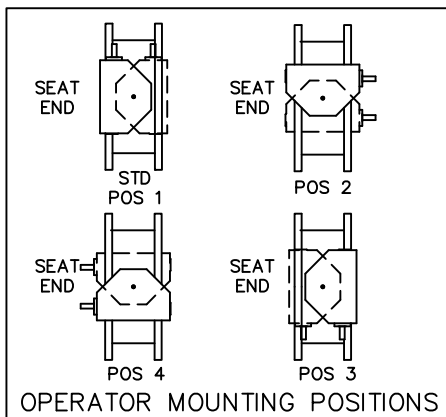


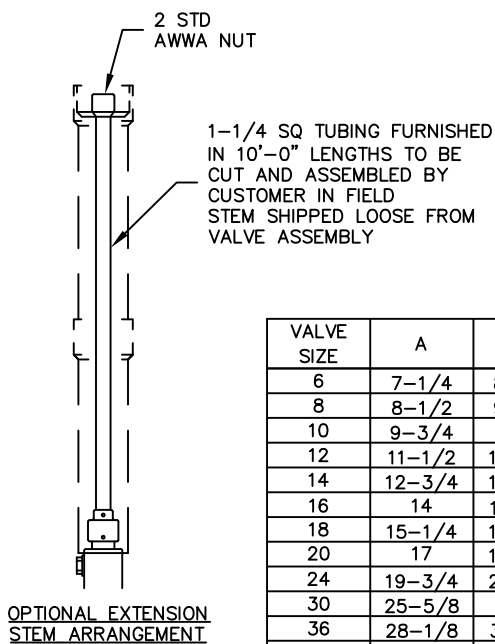
TAPPED HOLES:
 "F" SIZE UNC-2B X "E" DEEP
 6" THRU 30" VALVES 4 HOLES
 2 TOP & 2 BOTTOM
 36" THRU 48" VALVES 8 HOLES
 4 TOP & 4 BOTTOM
 EACH FLANGE



ACTUATOR POSITION 1



A. CHECK WITH FACTORY WHEN SELECTING ALTERNATE MIRROR ACTUATOR STYLES.



NOTES:

1. ALL DIMENSIONS SHOWN IN INCHES.
2. "D" DIMENSION $\pm 1/8$ ".
3. FOR BOLTS SMALLER THAN $\phi 1-3/4$, BOLT HOLES WILL BE $1/8$ " LARGER THAN DIAMETER OF BOLT. FOR BOLTS $\phi 1-3/4$ OR LARGER, BOLT HOLES WILL BE $1/4$ " LARGER THAN DIAMETER OF BOLT.
4. RECOMMENDATION FOR MATING FLANGES: WHERE INSULATING BUSHINGS ARE USED, IT IS NECESSARY THAT BOLT HOLES BE DRILLED OVERSIZE BY AN AMOUNT EQUAL TO TWO TIMES THE INSULATING SLEEVE THICKNESS TO MAINTAIN THE SAME MINIMUM CLEARANCE FOR BOLTS.
5. CAUTION: IT IS RECOMMENDED THAT VALVES BE INSTALLED INTO THE PIPING SYSTEM IN ACCORDANCE WITH AWWA M-11 IN ORDER TO PREVENT ANY UNDUE PIPING STRESS, DEFLECTION OR BENDING THAT MAY AFFECT THE PERFORMANCE OF THE VALVE.
6. EXTENSION STEM CAN BE USED WITH STANDARD VALVE BOXES OR 5" SOIL PIPE.

FLANGE THICKNESS "E" TOLERANCES	
3" THRU 12"	$\pm 1/8$ " - 0"
14" THRU 24"	$\pm 3/16$ " - 0"
30" THRU 48"	$\pm 1/4$ " - 0"

VALVE SIZE	A	B	C	D	E	F	G
6	7-1/4	8-3/8	12-1/2	6	1-1/2	12--3/4	10-5/8
8	8-1/2	9-5/8	15	8	1-5/8	12--7/8	13
10	9-3/4	11	17-1/2	8	1-7/8	16--1	15-1/4
12	11-1/2	12-5/8	20-1/2	8	2	16--1-1/8	17-3/4
14	12-3/4	13-7/8	23	12	2-1/8	20--1-1/8	20-1/4
16	14	15-1/8	25-1/2	12	2-1/4	20--1-1/4	22-1/2
18	15-1/4	16-3/8	28	12	2-3/8	24--1-1/4	24-3/4
20	17	17-5/8	30-1/2	12	2-1/2	24--1-1/4	27
24	19-3/4	20-1/4	36	12	2-3/4	24--1-1/2	32
30	25-5/8	26	43	12	3	28--1-3/4	39-1/4
36	28-1/8	31-1/8	50	15	3-3/8	32--2	46
42	32-1/8	35-1/8	57	15	3-11/16	36--2	52-3/4
48	36-1/4	39-5/8	65	15	4	40--2	60-3/4

ACTUATOR SIZE	J	L	M	N	P	Q	R	NUMBER OF TURNS
MDT-2S	4-11/16	2	2-1/8	2	4-1/2	4-1/4	8-1/4	32
MDT-3S	5-5/8	2-7/16	3-1/4	3-5/32	5-5/8	5-3/8	10-3/8	30
MDT-4S	6-3/8	2-27/32	3-3/8	4	7-5/16	6-3/4	11-5/16	40
MDT-5	7-9/16	3-15/32	4-1/2	5-1/2	8-3/4	10-7/16	17	44
MDT-5S	8-5/16	3-15/16	5-1/2	7	10-1/2	15-15/16	19-7/8	136
MDT-6S	11 1/8	5-1/16	7	8-1/4	12-5/8	14-3/16	26-1/2	215

REV	DATE	DESCRIPTION	DWN	APP
7	5/1/23	ADDED POSITION CHART	RTF	RF
6	09/17/21	REMOVE NOTE FOR RECOMMENDED FLOW DIRECTION FOR HP350	CA	TF
5	9-12-16	REVISED FLOW DIRECTION NOTE	SAD	SS
4	8-28-14	REVISED DIM / ADDED TOL. BLOCK	JUR	RCB
3	1-18-10	4-1/4 WAS 4-1/2; 10-7/16 WAS 10	MZ	CEM
2	11-17-09	CORRECTED FLOW ARROW	CEM	JR
1	1-18-09	ADDED ARROWS	AA	JHW

PRATT
 a MUELLER brand

GENERAL ARRANGEMENT DRAWING
 6"-48" HP-350 VALVE FLANGED ENDS
 MDT BURIED SERVICE ACTUATOR

SCALE NONE DATE 1-05-08
 DRAWN BY AA CHECKED BY PPS
 APPROVED GA=BORDER
 DRWG. NO. GA-11861 REV 7 A/C