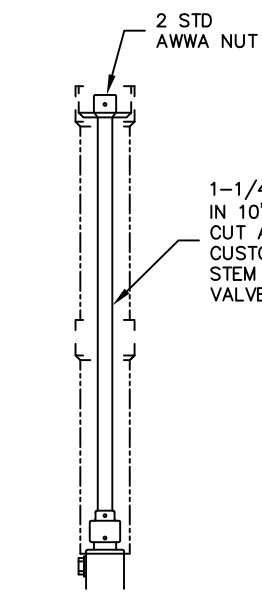


18" & 20" BODIES HAVE TAPPED HOLES
TAPPED HOLES ARE "F" UNC-2B X "E" DEEP
2 HOLES AT TOP AND 2 HOLES
AT BOTTOM PER FLANGE.

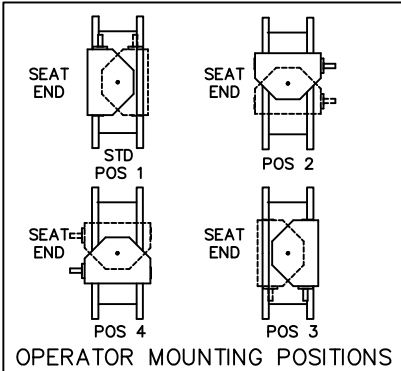
F = NO. & SIZE OF BOLTS
125# STANDARD LAYOUT
STRADDLE CENTERLINE
INCLUDES TAPPED HOLES
EACH FLANGE

TOLERANCES	
FLANGE THICKNESS "E":	+1/8"
LAYING LENGTH "D":	
3" THRU 10"	+1/16"
12" THRU 20"	+1/8"
BOLT CIRCLE "G":	+1/64"
FLANGE O.D. "C":	
3" THRU 10"	+1/8"
12" THRU 20"	+3/16"

ACTUATOR POSITION 1



1-1/4 SQ TUBING FURNISHED
IN 10'-0" LENGTHS TO BE
CUT AND ASSEMBLED BY
CUSTOMER IN FIELD
STEM SHIPPED LOOSE FROM
VALVE ASSEMBLY



OPERATOR MOUNTING POSITIONS

- A. IGNORE SEAT SIDE DESIGNATION ON
BFV SIZE 3" -20"
- B. CHECK WITH FACTORY WHEN SELECTING
ALTERNATE MIRROR ACTUATOR STYLES.

NOTES:

1. ALL DIMENSIONS SHOWN IN INCHES.
2. "D" DIMENSION ±1/16".
3. FLANGE THROUGH BOLT HOLES WILL
BE 1/8" LARGER THAN DIAMETER OF BOLT.
4. DIMENSIONS AND DRILLING OF END FLANGES
CONFORM TO THE AMERICAN CAST IRON FLANGE
STANDARDS, CLASS 125 (B16.1).
5. VALVES MANUFACTURED & TESTED IN
ACCORDANCE WITH AWWA SPECIFICATION C-504
LATEST REVISION, CLASS 250B.
6. RECOMMENDATION FOR MATING FLANGES: WHERE
INSULATING BUSHINGS ARE USED, IT IS NECESSARY
THAT BOLT HOLES BE DRILLED OVERSIZE BY AN
AMOUNT EQUAL TO TWO TIMES THE INSULATING
SLEEVE THICKNESS TO MAINTAIN THE SAME MINIMUM
CLEARANCE FOR BOLTS.
7. EXTENSION STEM CAN BE USED WITH STANDARD
VALVE BOXES OR 5" SOIL PIPE

VALVE SIZE	A	B	C	D	E	F	G
3	4-3/4	3-1/4	7-1/2	5	13/16	4--5/8	6
4	5-1/2	3-1/2	9	5	1	8--5/8	7 1/2
6	6-1/2	5-1/8	11	5	1-1/16	8--3/4	9 1/2
8	7-3/4	6-1/2	13-1/2	6	1 3/16	8--3/4	11 3/4
10	9	9-11/16	16	8	1 3/16	12-7/8	14 1/4
12	10-1/2	11-3/16	19	8	1 5/16	12--7/8	17
14	11-7/8	12-5/8	21	8	1 3/8	12--1	18 3/4
16	13-1/2	14-3/8	23-1/2	8	1 7/16	16--1	21 1/4
18	14-3/8	15-1/4	25	8	1 9/16	16--1 1/8	22 3/4
20	16	16-7/8	27-1/2	8	1 11/16	20--1 1/8	25

ACTUATOR SIZE	VALVE SIZE	J	L	M	N	P	Q	R	NUMBER OF TURNS
MDT-2S	3"-8"	4-11/16	2	2-1/8	2	4-1/2	4-1/4	8-1/4	32
MDT-3S	10"-14"	5-5/8	2-7/16	3-1/4	3-5/32	5-5/8	5-3/8	10-3/8	30
MDT-4S	16" & 18"	6-3/8	2-27/32	3-3/8	4	7-5/16	6-3/4	11-5/16	40
MDT-5	18" & 20"	7-9/16	3-15/32	4-1/2	5-1/2	8-3/4	10	17	44

REV	DATE	DESCRIPTION	DWN	APP
4	5/2/23	ADDED POSITION CHART	RTF	RF
3	12/16/16	UPDATED TITLE BLOCK	JWD	RF
2	4/26/11	REV COLUMN "E", ADD TOL.	JLM	RCB
1	10/06/08	REVISED COLUMN "B"	SK	RCB

PRATT

HP250II 125# FLG
3" THRU 20"
MDT BURIED SERVICE ACTUATOR

SCALE NONE DATE 1/30/09

DRAWN BY CEM CHECKED BY JR

APPROVED GA=BORDER

DRWG. NO. GA-11868 REV 4 AC