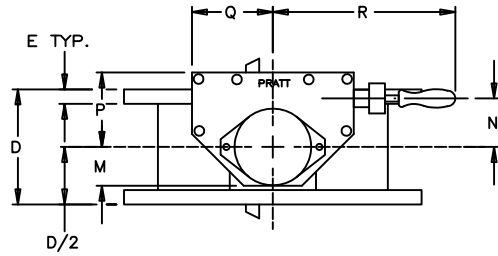
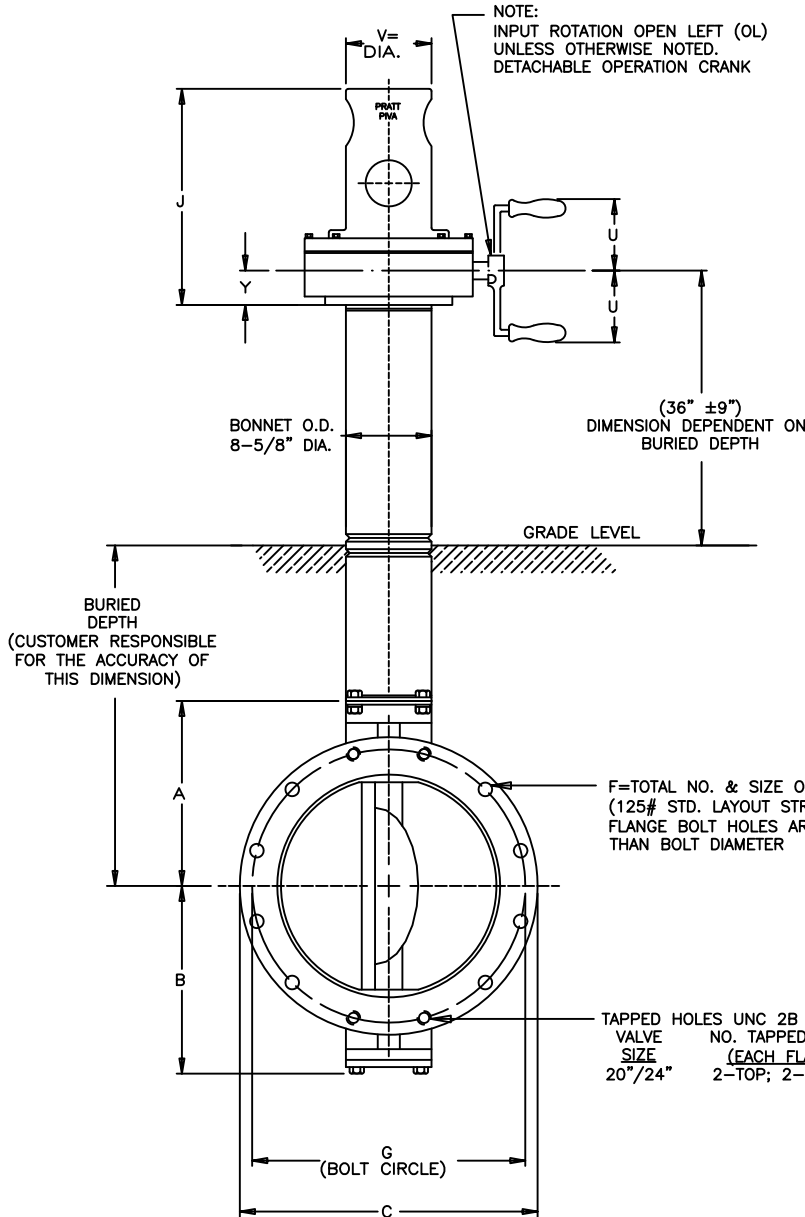


VALVE SIZE	ACTUATOR SIZE	A	B	C	(NOTE 1) D	E	F	G	J	M	N	P	Q	R	U	V	Y	NUMBER OF TURNS
20	MDT-5	16-1/2	17	27-1/2	8	1-3/4	20--1-1/8	25	14-3/4	4-1/2	5-1/2	8-3/4	10-1/8	24	12-9/16	4-1/2	3-1/2	44
24	MDT-5S	19-3/8	18-1/2	32	8	1-15/16	20--1-1/4	29-1/2	17-1/4	5-1/2	3-5/8	10-1/2	15-15/16	26-19/32	12-9/16	4-1/2	4	136



NOTE:
INPUT ROTATION OPEN LEFT (OL)
UNLESS OTHERWISE NOTED.
DETACHABLE OPERATION CRANK



NOTES:

1. ALL DIMENSIONS SHOWN IN INCHES. "D" DIMENSION $\pm 1/8$ "
2. DIMENSIONS AND DRILLING OF END FLANGES CONFORM TO THE AMERICAN CAST IRON FLANGE STANDARDS, CLASS 125 (B16.1).
3. (RECOMMENDATIONS FOR MATING FLANGES) WHERE INSULATING BUSHINGS ARE USED, IT IS NECESSARY THAT BOLT HOLES BE DRILLED OVERSIZE BY AN AMOUNT EQUAL TO TWO TIMES THE INSULATING SLEEVE THICKNESS TO MAINTAIN THE SAME MINIMUM CLEARANCE FOR BOLTS.
4. VALVES MANUFACTURED AND TESTED IN ACCORDANCE WITH AWWA SPECIFICATIONS C-504, CLASS 250B
5. ACTUATOR MOUNTED IN POSITION AS SHOWN.
6. VALVE ASSEMBLIES ARE UNDERWRITERS LABORATORIES (UL) LISTED AND APPROVED FOR USE IN FIRE PROTECTION SYSTEMS.

PAINT: ALL PAINT ABOVE GRADE LEVEL - FIRE SAFETY RED
ALL PAINT BELOW GRADE LEVEL - AMERCOAT 370 OXIDE RED

F=TOTAL NO. & SIZE OF BOLTS
(125# STD. LAYOUT STRADDLE CENTERLINE)
FLANGE BOLT HOLES ARE 1/8" LARGER
THAN BOLT DIAMETER

TAPPED HOLES UNC 2B X E DEEP
VALVE NO. TAPPED HOLES
SIZE (EACH FLANGE)
20"/24" 2-TOP; 2-BOTTOM

REV	DATE	DESCRIPTION	DWN	APP
2	4/18/18	REV. LOGO/DIMS/NOTES	DCC	RF
1	12/16/15	REV. DIMS. J,M,Y	JUR	

PRATT

PIVA BUTTERFLY VALVE
20" & 24" 250/125# FLANGED ENDS
MDT ACTUATOR
DETACHABLE HANDCRANK (UL)

SCALE NONE DATE 3/3/15

DRAWN BY JUR CHECKED BY PPS

APPROVED GA=BORDER

DRWG. NO. GA-11919 REV 2 A/C