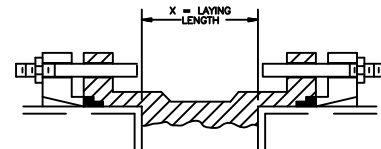
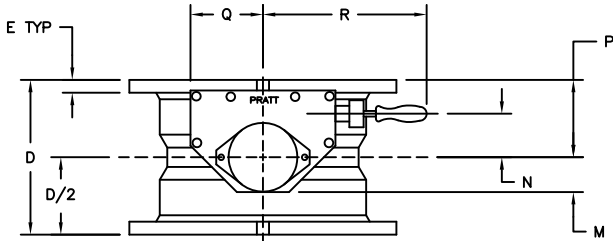
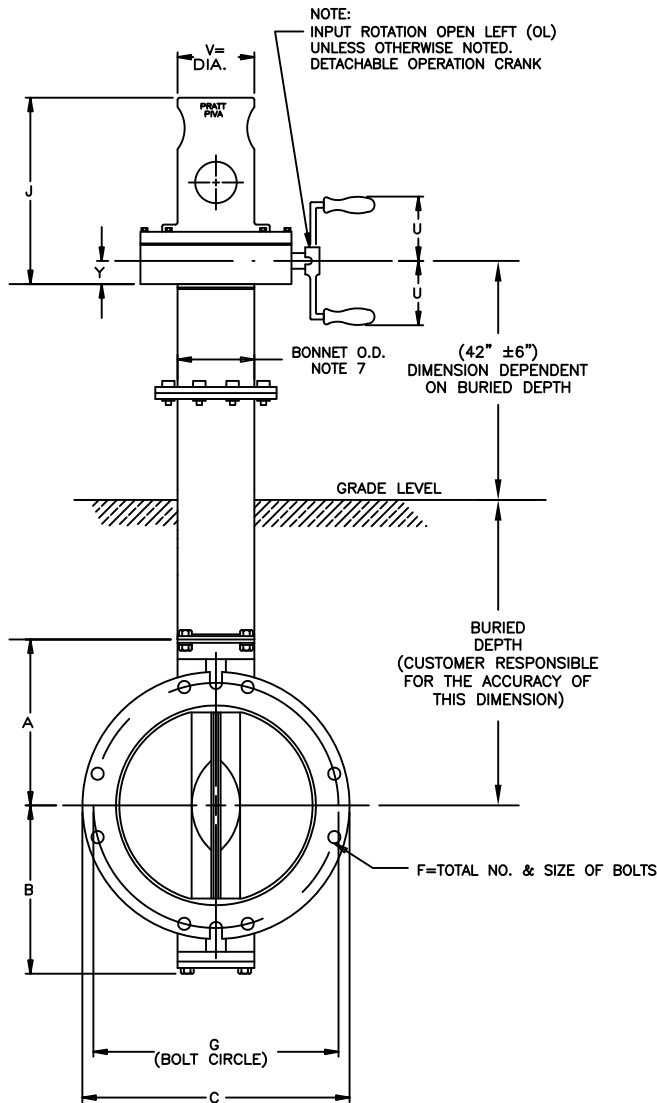


| VALVE SIZE | ACTUATOR SIZE | A | B | C | D (NOTE 1) | E | F | G | X | J | M | N | P | Q | R | U | V | Y | NUMBER OF TURNS |
|------------|---------------|--------|--------|----------|------------|--------|---------|--------|-------|--------|-------|--------|--------|-------|---------|---------|-------|---------|-----------------|
| 4 | MDT-2S | 5-7/8 | 4-1/2 | 9 | 8-1/8 | 1 | 4--3/4 | 7-1/2 | 3-1/8 | 12 | 2-1/8 | 2 | 4-1/2 | 4-1/2 | 13-5/16 | 8-5/8 | 4-1/2 | 2 | 32 |
| 6 | MDT-2S | 6-7/8 | 5-1/2 | 11 | 8-1/2 | 1-1/6 | 6--3/4 | 9-1/2 | 3-1/2 | 12 | 2-1/8 | 2 | 4-1/2 | 4-1/2 | 13-5/16 | 8-5/8 | 4-1/2 | 2 | 32 |
| 8 | MDT-2S | 8-1/2 | 6-3/4 | 13-1/4 | 8-5/8 | 1-1/8 | 6--3/4 | 11-3/4 | 3-5/8 | 12 | 2-1/8 | 2 | 4-1/2 | 4-1/2 | 13-5/16 | 8-5/8 | 4-1/2 | 2 | 32 |
| 10 | MDT-3S | 9-3/8 | 9-7/8 | 15-9/16 | 10 | 1-3/16 | 8--3/4 | 14 | 5 | 12-7/8 | 3-1/4 | 3-5/32 | 5-5/8 | 5-3/8 | 15-7/16 | 8-5/8 | 4-1/2 | 2-7/16 | 30 |
| 12 | MDT-3S | 11 | 11-3/8 | 17-15/16 | 10-1/2 | 1-1/4 | 8--3/4 | 16-1/4 | 5-1/2 | 12-7/8 | 3-1/4 | 3-5/32 | 5-5/8 | 5-3/8 | 15-7/16 | 8-5/8 | 4-1/2 | 2-7/16 | 30 |
| 14 | MDT-3S | 12-3/8 | 12-5/8 | 20-5/16 | 11-1/2 | 1-5/16 | 10--3/4 | 18-3/4 | 4-1/2 | 12-7/8 | 3-1/4 | 3-5/32 | 5-5/8 | 5-3/8 | 15-7/16 | 8-5/8 | 4-1/2 | 2-7/16 | 30 |
| 16 | MDT-4S | 14 | 14-1/2 | 22-9/16 | 12 | 1-7/16 | 12--3/4 | 21 | 5 | 13-1/2 | 3-3/8 | 4 | 7-5/16 | 6-3/4 | 18-3/4 | 12-9/16 | 4-1/2 | 2-27/32 | 40 |
| 18 | MDT-4S | 14-7/8 | 15-1/4 | 24-11/16 | 12-1/4 | 1-3/8 | 12--3/4 | 23-1/4 | 5-1/4 | 13-1/2 | 3-3/8 | 4 | 7-5/16 | 6-3/4 | 18-3/4 | 12-9/16 | 4-1/2 | 2-27/32 | 40 |



NOTE:
BOLTS, NUTS, GLANDS AND GASKETS
FURNISHED BY OTHERS.



NOTES:

- ALL DIMENSIONS SHOWN IN INCHES. "D" DIMENSION $\pm 1/16"$ FOR 4" THRU 10" VALVES. "D" DIMENSION $\pm 1/8"$ FOR 12" THRU 18" VALVES.
- DIMENSIONS AND DRILLING OF MECHANICAL JOINT ENDS CONFORM TO ANSI AWWA C111 A21.11
- (RECOMMENDATIONS FOR MATING FLANGES) WHERE INSULATING BUSHINGS ARE USED, IT IS NECESSARY THAT BOLT HOLES BE DRILLED OVERSIZE BY AN AMOUNT EQUAL TO TWO TIMES THE INSULATING SLEEVE THICKNESS TO MAINTAIN THE SAME MINIMUM CLEARANCE FOR BOLTS.
- VALVES MANUFACTURED AND TESTED IN ACCORDANCE WITH AWWA SPECIFICATIONS C-504. CLASS 250B
- ACTUATOR MOUNTED IN POSITION AS SHOWN.
- VALVE ASSEMBLIES ARE UNDERWRITERS LABORATORIES (UL) LISTED AND APPROVED FOR USE IN FIRE PROTECTION SYSTEMS.
- OUTER TUBE O.D.
4-1/2" ON VALVE SIZES 8" AND SMALLER.
5-9/16" ON VALVE SIZES 10" THRU 14"
6-5/8" ON VALVE SIZES 16" AND 18"

PAINT: UPPER BONNET AND ACTUATOR - FIRE SAFETY RED
LOWER BONNET AND VALVE - AMERCOAT 370 OXIDE RED

| | | | | |
|-----|----------|-----------------------|-----|-----|
| 2 | 4/18/18 | REV. LOGO/DIMS./NOTES | DCC | RF |
| 1 | 12/16/15 | REVISED DIM. J | JUR | RCB |
| REV | DATE | DESCRIPTION | DWN | APP |

PRATT

4"-18" PIVA 250# BUTTERFLY VALVE
MJE ENDS MDT ACTUATOR
DETACHABLE HANDCRANK
(UL)

SCALE NONE DATE 3/3/15

DRAWN BY JUR CHECKED BY PPS

APPROVED GA=BORDER

DRWG. NO. GA-11920 REV 2 A/C