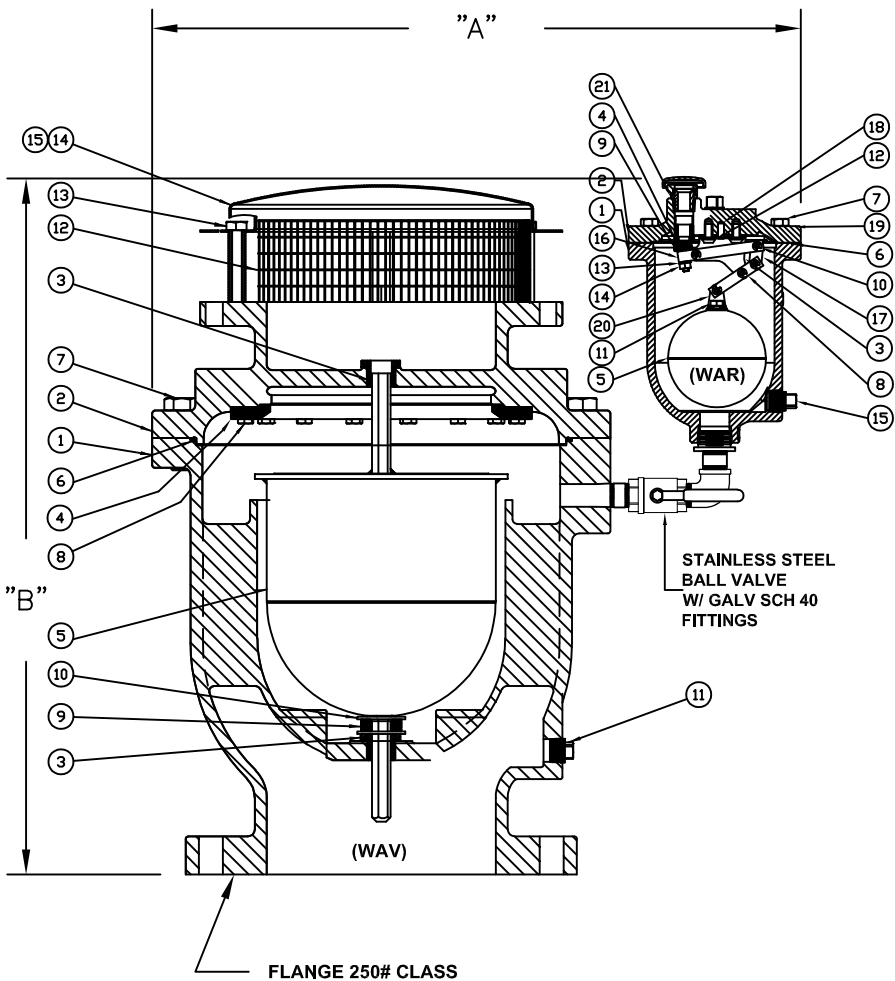


VALVE SIZE	COMBO NUMBER	AIR VACUUM MODEL	AIR RELEASE MODEL	PIPE KIT	"A"	"B"
4"	WCVD40-300F-O-FS	WAV40-300F-FS	WAR10-532-300-FS	2357290-AIR	20"	22-1/2"
6"	WCVD60-300F-O-FS	WAV60-300F-FS	WAR10-532-300-FS	2357290-AIR	22"	24-1/4"
8"	WCVD80-300F-O-FS	WAV80-300F-FS	WAR10-532-300-FS	2357290-AIR	26"	25-1/2"
	WCVD80-300F-S-FS	WAV80-300F-FS	WAR20-732-300-FS	2357291-AIR	30"	29"
10"	WCVD100-300F-O-FS	WAV100-300F-FS	WAR10-532-300-FS	2357290-AIR	28"	31"
	WCVD100-300F-S-FS	WAV100-300F-FS	WAR20-732-300-FS	2357291-AIR	32"	32-1/2"
12"	WCVD120-300F-O-FS	WAV120-300F-FS	WAR10-532-300-FS	2357290-AIR	32"	35"
	WCVD120-300F-S-FS	WAV120-300F-FS	WAR20-732-300-FS	2357291-AIR	36"	36"
14"	WCVD140-300F-O-FS	WAV140-300F-FS	WAR10-532-300-FS	2357290-AIR	35"	38"
	WCVD140-300F-S-FS	WAV140-300F-FS	WAR20-732-300-FS	2357291-AIR	39"	38"
16"	WCVD160-300F-O-FS	WAV160-300F-FS	WAR10-532-300-FS	2357290-AIR	38-1/2"	41"
	WCVD160-300F-S-FS	WAV160-300F-FS	WAR20-732-300-FS	2357291-AIR	42-1/2"	41"



AIR RELEASE VALVE (WAR)		
1	BODY	DUCTILE IRON A536 (65-45-12)
2	COVER	DUCTILE IRON A536 (65-45-12)
3	LEVER BRACKET	316SS
4	SEAT	316SS
5	FLOAT	316SS
6	O-RING	EPDM
7	COVER BOLT	316SS
8	SHORT LEVER ARM	316SS
9	BUTTON	316SS/EPDM
10	PIVOT PIN/RET RING	316SS/17-7 PH SS
11	FLOAT RETAINER	316SS
12	POSITIONER	316SS
13	LOCK WASHER	316SS
14	LOCK NUT	316SS
15	1/2" PIPE PLUG	316SS
16	LONG LEVER ARM	316SS
17	ARM LINK	316SS
18	POSITIONING PIN	420SS
19	LOCK WASHER	316SS
20	CLEVIS	316SS
21	VENT CAP	DUCTILE IRON A536 (65-45-12)/ 316SS SCREEN

AIR VACUUM VALVE (WAV)		
1	BODY	DUCTILE IRON A536 (65-45-12)
2	COVER	DUCTILE IRON A536 (65-45-12)
3	GUIDE BUSHING	316SS
4	SEAT	EPDM
5	FLOAT	316SS
6	O-RING	EPDM
7	COVER BOLT	316SS
8	SHOULDER SCREW	316SS
9	CUSHION BUMPER	EPDM
10	WASHER	316SS
11	1" PIPE PLUG	316SS
12	SCREEN	STAINLESS STEEL
13	HOOD BOLT	316SS
14	STAND OFF	CARBON STEEL
15	HOOD	CARBON STEEL

▲	8/22/17	UPDATED GA	JUR	SS
▲	8/22/17	UPDATED GA	JUR	RF
REV.	DATE	DESCRIPTION	BY	APP

PRATT

4"-16" WCVD
DUAL BODY COMBO AIR VALVES
300 PSI/250 FLANGE DRILLING

SCALE NONE DATE 8/16/13

DRAWN BY JTC CHECKED BY RCB

APPROVED GA=BORDER

DRWG. NO. GA-11923 REV 2 A/C