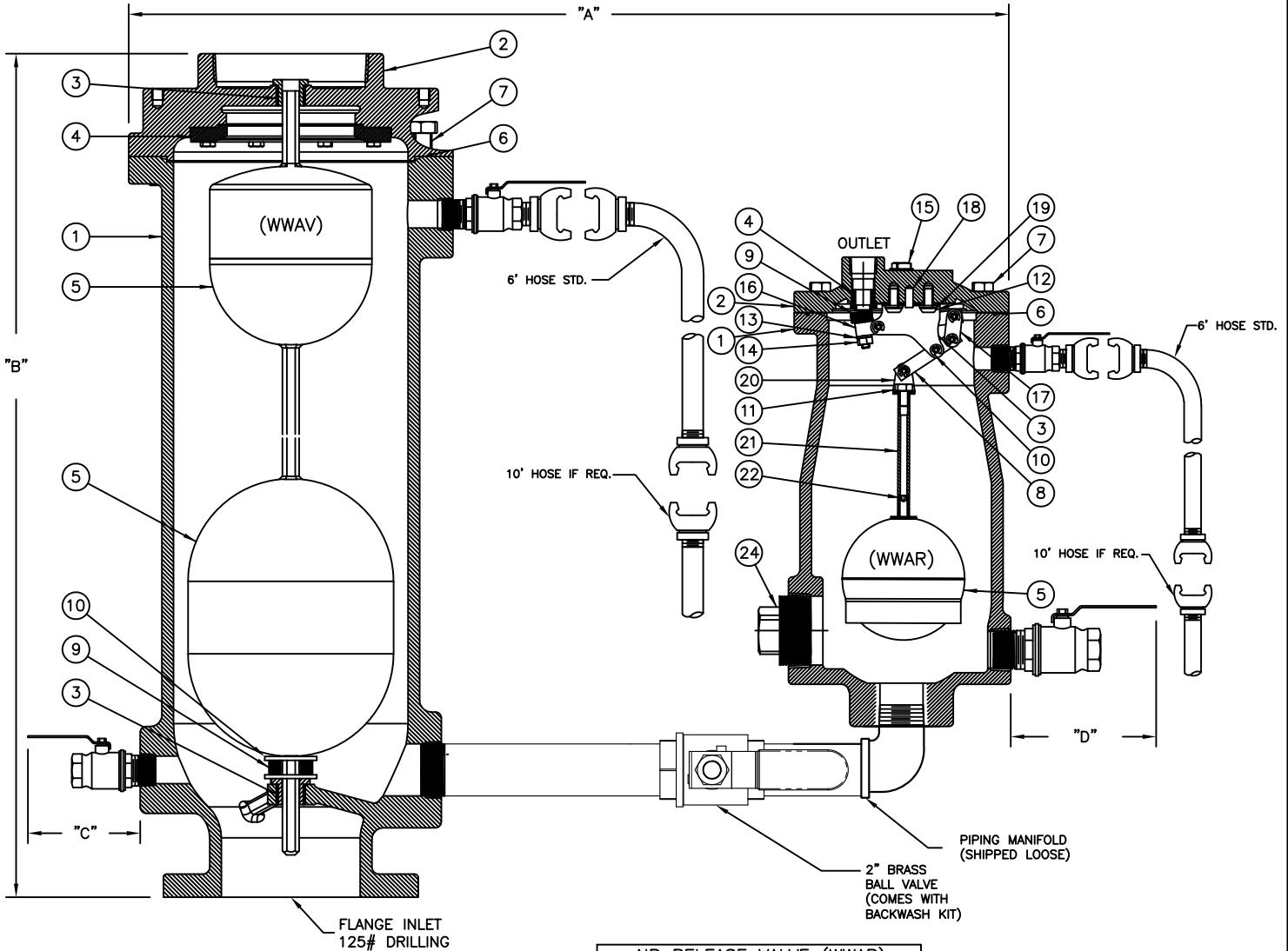


INLET SIZE (NPT)	COMBO NUMBER	AIR VACUUM MODEL	AIR RELEASE MODEL	PIPING MANIFOLD	A	B	C	D
4"	WWCVD40-150F-WB-FSBW	WWAV40-150F-FS	WWAR20-316-150-FS	2346593	27-9/16"	36-1/2"	5-11/32	6-13/16
	WWCVD40-150F-WE-FSBW	WWAV40-150F-FS	WWAR20-716-150-FS	2346593	28-13/16"	36-1/2"	5-11/32	6-13/16
6"	WWCVD60-150F-WB-FSBW	WWAV60-150F-FS	WWAR20-316-150-FS	2346593	29-9/16"	36-1/2"	5-11/32	6-13/16
	WWCVD60-150F-WE-FSBW	WWAV60-150F-FS	WWAR20-716-150-FS	2346593	30-13/16"	36-1/2"	5-11/32	6-13/16
8"	WWCVD80-150F-WB-FSBW	WWAV60-150F-FS	WWAR20-316-150-FS	2346593	33-9/16"	41-3/8"	5-11/32	6-13/16
	WWCVD80-150F-WE-FSBW	WWAV60-150F-FS	WWAR20-716-150-FS	2346593	34-13/16"	41-3/8"	5-11/32	6-13/16



ITEM	DESCRIPTION	MATERIAL
1	BODY	DUCTILE IRON
2	COVER	DUCTILE IRON
3	BUSHING	STAINLESS STEEL
4	SEAT	EPDM
5	FLOAT	STAINLESS STEEL
6	O-RING	EPDM
7	COVER BOLT	STAINLESS STEEL
8	SHOULDER SCREW	STAINLESS STEEL
9	CUSHION BUMPER	EPDM
10	WASHER	STAINLESS STEEL

ITEM	DESCRIPTION	MATERIAL
1	BODY	DUCTILE IRON
2	COVER	DUCTILE IRON
3	LEVER BRACKET	STAINLESS STEEL
4	SEAT	STAINLESS STEEL
5	FLOAT	STAINLESS STEEL
6	O-RING	EPDM
7	COVER BOLT	STAINLESS STEEL
8	SHORT LEVER ARM	STAINLESS STEEL
9	BUTTON	SS/EPDM
10	PIVOT PIN & RETAINING RING	STAINLESS STEEL
11	FLOAT RETAINER	STAINLESS STEEL
12	POSITIONER	STAINLESS STEEL
13	LOCK WASHER	STAINLESS STEEL
14	LOCK NUT	STAINLESS STEEL
15	PIPE PLUG	STAINLESS STEEL
16	LONG LEVER ARM	STAINLESS STEEL
17	ARM LINK	STAINLESS STEEL
18	POSITIONING PIN	STAINLESS STEEL
19	LOCK WASHER	STAINLESS STEEL
20	CLEVIS	STAINLESS STEEL
21	EXTENSION SHAFT	STAINLESS STEEL
22	SOCKET SET SCREW	STAINLESS STEEL
24	PIPE PLUG	STAINLESS STEEL

2	4/23/18	UPDATED GA	JUR	SS
1	9/12/17	UPDATED GA	RTF	JUR
REV	DATE	DESCRIPTION	DWN	APP

**PRATT**

4"-8" WWCVD  
DUAL BODY WASTEWATER  
COMBINATION AIR VALVES WITH  
BACKWASH ACCESSORY KIT

SCALE NONE DATE 8/16/13

DRAWN BY JIC CHECKED BY RGB

APPROVED GA=BORDER

DRWG. NO. GA-11926 REV 2 J/C