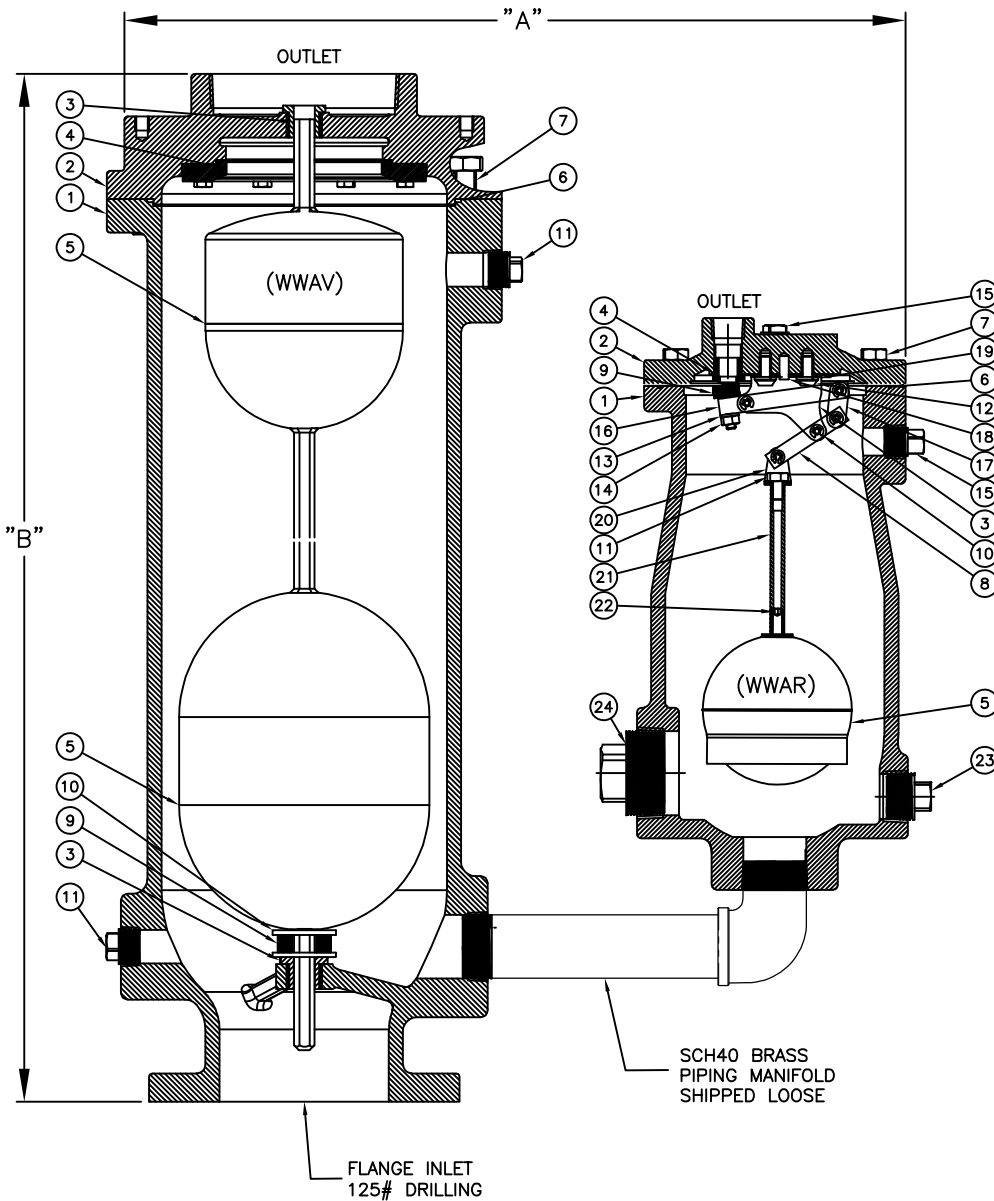


A.V. PIPE SIZE	COMBO NUMBER	AIR VACUUM MODEL	AIR RELEASE MODEL	PIPING MANIFOLD	A	B
4"	WWCVD40-150F-WB-FS	WWAV40-150F-FS	WWAR20-316-150-FS	2346593	21"	36-1/2"
	WWCVD40-150F-WE-FS	WWAV40-150F-FS	WWAR20-716-150-FS	2346593	22-1/8"	36-1/2"
6"	WWCVD60-150-WB-FS	WWAV60-150F-FS	WWAR20-316-150-FS	2346593	23-5/8"	36-1/2"
	WWCVD60-150-WE-FS	WWAV60-150F-FS	WWAR20-716-150-FS	2346593	24-1/8"	36-1/2"
8"	WWCVD80-150-WB-FS	WWAV80-150F-FS	WWAR20-316-150-FS	2346593	26-3/4"	41-1/4"
	WWCVD80-150F-WE-FS	WWAV80-150F-FS	WWAR20-716-150-FS	2346593	28"	41-1/4"

AIR VACUUM VALVE (WWAV)		
ITEM	DESCRIPTION	MATERIAL
1	BODY	DUCTILE IRON A536 (65-45-12)
2	COVER	DUCTILE IRON A536 (65-45-12)
3	BUSHING	316SS
4	SEAT	EPDM
5	FLOAT	316SS
6	O-RING	EPDM
7	COVER BOLT	316SS
8	SHOULDER SCREW	316SS
9	CUSHION BUMPER	EPDM
10	WASHER	316SS
11	1" PIPE PLUG	316SS

AIR RELEASE VALVE (WWAR)		
ITEM	DESCRIPTION	MATERIAL
1	BODY	DUCTILE IRON A536 (65-45-12)
2	COVER	DUCTILE IRON A536 (65-45-12)
3	LEVER BRACKET	316SS
4	SEAT	316SS
5	FLOAT	316SS
6	O-RING	EPDM
7	COVER BOLT	316SS
8	SHORT LEVER ARM	316SS
9	BUTTON	316SS/EPDM
10	PIVOT PIN & RETAINING RING	316SS/17-7 PH SS
11	FLOAT RETAINER	316SS
12	POSITIONER	316SS
13	LOCK WASHER	316SS
14	LOCK NUT	316SS
15	3/4" PIPE PLUG	316SS
16	LONG LEVER ARM	316SS
17	ARM LINK	316SS
18	POSITIONING PIN	420SS
19	LOCK WASHER	316SS
20	CLEVIS	316SS
21	EXTENSION SHAFT	316SS
22	SOCKET SET SCREW	316SS
23	1" PIPE PLUG	316SS
24	2" PIPE PLUG	316SS



3	2/22/18	UPDATED GA	JUR	SS
2	9/6/17	UPDATED GA	JUR	RF
1	3/13/14	UPDATED PN'S	JUR	RCB
REV	DATE	DESCRIPTION	DWN	APP

PRATT

4"-8" WWCVD
DUAL BODY WASTEWATER
COMBINATION AIR VALVES

SCALE	NONE	DATE	8/16/17
DRAWN BY	JTC	CHECKED BY	RCB
APPROVED		GA=BORDER	
DRWG. NO.	GA-11927	REV	3
			4/c