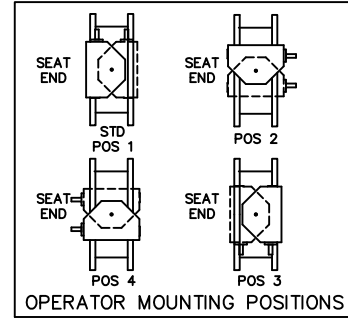
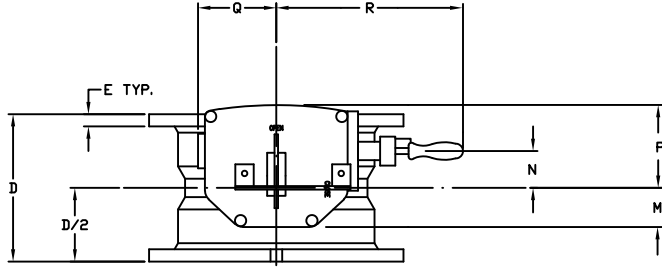
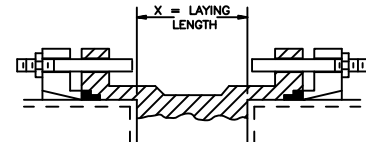
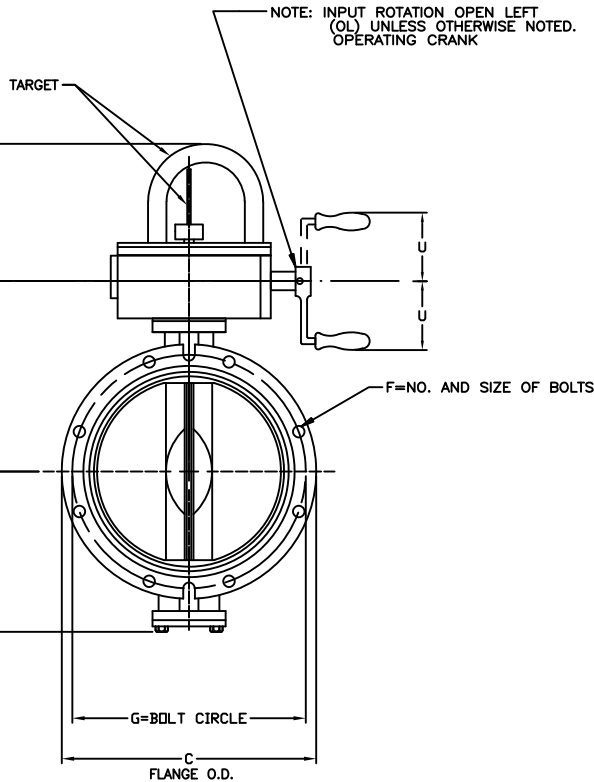


VALVE SIZE	ACTUATOR SIZE	B	C	D (SEE NOTE 1)	E	F	G	H	J	M	N	P	Q	R	U	X	NUMBER OF TURNS
4	MDT-2S	4-1/2	9	8-1/8	1	4--3/4	7-1/2	7-15/32	7-3/8	2-1/8	2	4-1/2	4-1/2	11	4-9/16	3-1/8	32
6	MDT-2S	5-1/2	11	8-1/2	1-1/16	6--3/4	9-1/2	8-1/2	7-3/8	2-1/8	2	4-1/2	4-1/2	11	4-9/16	3-1/2	32
8	MDT-2S	6-3/4	13-1/4	8-5/8	1-1/8	6--3/4	11-3/4	9-3/4	7-3/8	2-1/8	2	4-1/2	4-1/2	13-5/16	8-9/16	3-5/8	32
10	MDT-3S	9-7/8	15-9/16	10	1-3/16	8--3/4	14	11-7/16	7-21/32	3-1/4	3-5/32	5-5/8	5-3/8	15-7/16	8-9/16	5	30
12	MDT-3S	11-3/8	17-15/16	10-1/2	1-1/4	8--3/4	16-1/4	12-15/16	7-21/32	3-1/4	3-5/32	5-5/8	5-3/8	15-7/16	8-9/16	5-1/2	30
14	MDT-3S	12-5/8	20-5/16	11-1/2	1-5/16	10--3/4	18-3/4	14-3/4	7-21/32	3-1/4	3-5/32	5-5/8	5-3/8	15-7/16	8-9/16	4-1/2	30
16	MDT-4S	14-1/2	22-9/16	12	1-7/16	12-3/4	21	16-11/32	9-7/8	3-3/8	4	7-5/16	6-3/4	18-3/4	12-9/16	5	40
18	MDT-4S	15-1/4	24-11/16	12-1/4	1-3/8	12--3/4	23-1/4	17-7/32	9-7/8	3-3/8	4	7-5/16	6-3/4	18-3/4	12-9/16	5-1/4	40
20	MDT-5	17	27-3/32	12-1/2	1-1/2	14--3/4	25-1/2	19-15/32	11-5/32	4-1/2	5-1/2	8-3/4	10-1/8	24	12-9/16	5-1/2	44
24	MDT-5S	18-5/8	31-9/16	13-1/4	1-5/8	16--3/4	30	23-5/16	12-1/8	5-1/2	3-5/8	10-1/2	15-15/16	26-7/8	12-9/16	6-3/8	136



A. IGNORE SEAT SIDE DESIGNATION ON BVF SIZE 3" -20"



INSTALLATION DIAGRAM
NOTE: BOLTS, NUTS, GLANDS AND GASKETS FURNISHED BY OTHERS.

NOTES:

- ALL DIMENSIONS SHOWN IN INCHES. "D" DIMENSION $\pm 1/16"$ FOR 4" THRU 10" VALVES. "D" DIMENSION $\pm 1/8"$ FOR 12" THRU 24" VALVES.
- DIMENSIONS AND DRILLING OF END FLANGES CONFORM TO THE AMERICAN CAST IRON FLANGE STANDARDS, CLASS 125 (B16.1).
- (RECOMMENDATIONS FOR MATING FLANGES) WHERE INSULATING BUSHINGS ARE USED, IT IS NECESSARY THAT BOLT HOLES BE DRILLED OVERSIZE BY AN AMOUNT EQUAL TO TWO TIMES THE INSULATING SLEEVE THICKNESS TO MAINTAIN THE SAME MINIMUM CLEARANCE FOR BOLTS.
- VALVES MANUFACTURED AND TESTED IN ACCORDANCE WITH AWWA SPECIFICATIONS C-504.
- ACTUATOR MOUNTED IN POSITION AS SHOWN.
- VALVE ASSEMBLIES ARE UNDERWRITERS LABORATORIES (UL) LISTED AND APPROVED FOR USE IN FIRE PROTECTION SYSTEMS.

PAINT: INTERIOR OF VALVE: AMERCOAT 370 OXIDE RED. EXTERIOR OF VALVE (EXCEPT FLANGE FACES) AND ACTUATOR: SAFETY RED. TARGET: SAFETY YELLOW

4	5/5/23	ADDED POSITION CHART	RTF	RF
3	5/10/16	REVISED NOTES 4" WAS 6"	JUR	RF
2	12/16/15	REV. DIM, REMOVED POSITION	JUR	RCB
1	4/20/15	ADDED 24"/MDT-5S	RCB	AA
REV	DATE	DESCRIPTION	DWN	APP

PRATT

GENERAL ARRANGEMENT DRAWING
IBV BUTTERFLY VALVES
MECHANICAL JOINT ENDS
(250#UL)

SCALE NONE DATE 2/25/15

DRAWN BY JUR CHECKED BY PPS

APPROVED GA=BORDER

DRWG. NO. GA-11962 REV 4 A/C