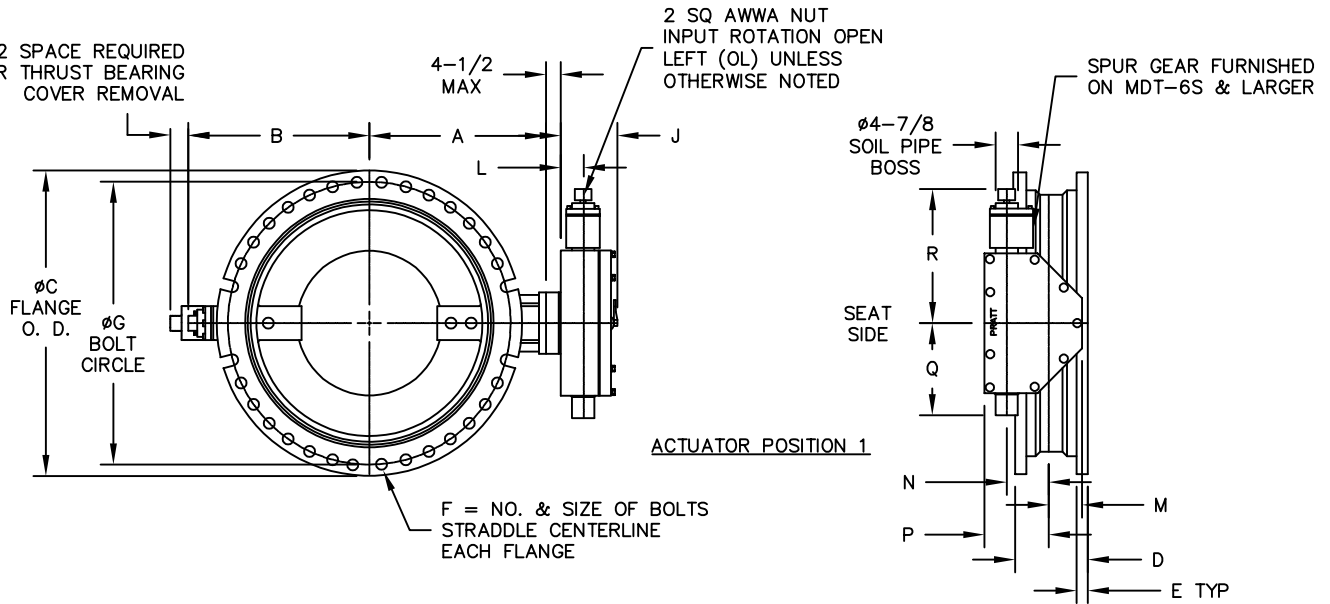


3-1/2 SPACE REQUIRED FOR THRUST BEARING COVER REMOVAL



ACTUATOR POSITION 1

2 SQ AWWA NUT
INPUT ROTATION OPEN
LEFT (OL) UNLESS
OTHERWISE NOTED

SPUR GEAR FURNISHED ON MDT-6S & LARGER

ØC FLANGE O. D.
ØG BOLT CIRCLE

F = NO. & SIZE OF BOLTS STRADDLE CENTERLINE EACH FLANGE

Ø4-7/8 SOIL PIPE BOSS

SEAT SIDE

R

Q

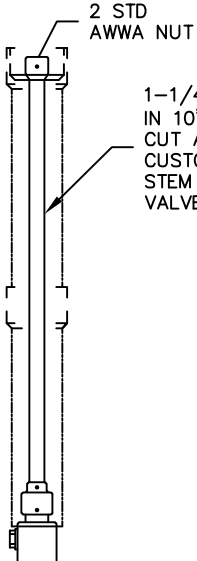
N

P

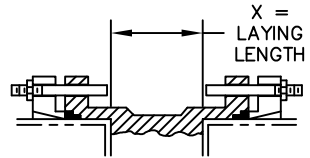
M

D

E TYP



1-1/4 SQ TUBING FURNISHED IN 10'-0" LENGTHS TO BE CUT AND ASSEMBLED BY CUSTOMER IN FIELD STEM SHIPPED LOOSE FROM VALVE ASSEMBLY



INSTALLATION DIAGRAM
BOLTS, NUTS, GLANDS AND GASKETS FURNISHED BY OTHERS

NOTES:

- ALL DIMENSIONS SHOWN IN INCHES.
- "D" DIMENSION ±1/8".
- FOR BOLTS SMALLER THAN Ø1-3/4, BOLT HOLES WILL BE 1/8" LARGER THAN DIAMETER OF BOLT. FOR BOLTS Ø1-3/4 OR LARGER, BOLT HOLES WILL BE 1/4" LARGER THAN DIAMETER OF BOLT.
- DIMENSIONS & DRILLING OF MECHANICAL JOINT ENDS CONFORM TO ANSI/ AWWA C111/ A21.11
- CAUTION: IT IS RECOMMENDED THAT VALVES BE INSTALLED INTO THE PIPING SYSTEM IN ACCORDANCE WITH AWWA M-11 IN ORDER TO PREVENT ANY UNDUE PIPING STRESS, DEFLECTION OR BENDING THAT MAY AFFECT THE PERFORMANCE OF THE VALVE.
- EXTENSION STEM CAN BE USED WITH STANDARD VALVE BOXES OR 5" SOIL PIPE.

OPTIONAL EXTENSION STEM ARRANGEMENT

VALVE SIZE	A	B	C	D	E	F	G	X
6	7-1/4	8-3/8	11-1/16	10	1-1/16	6--3/4	9-1/2	5
8	8-1/2	9-5/8	13-5/16	10	1-1/8	6--3/4	11-3/4	5
10	9-3/4	11	15-5/8	10	1-3/16	8--3/4	14	5
12	11-1/2	12-5/8	17-7/8	10	1-1/4	8--3/4	16-1/4	5
14	12-3/4	13-7/8	20-1/4	12-1/2	1-5/16	10--3/4	18-3/4	5-1/2
16	14	15-1/8	22-1/2	12-1/2	1-3/8	12--3/4	21	5-1/2
18	15-1/4	16-3/8	24-3/4	13-1/4	1-7/16	12--3/4	23-1/4	6-1/4
20	17	17-5/8	27	13-1/4	1-1/2	14--3/4	25-1/2	6-1/4
24	19-3/4	20-1/4	31-1/2	13-1/4	1-5/8	16--3/4	30	6-1/4
30	25-5/8	25-1/2	39	18	1-13/16	20--1-1/8	36-7/8	10
36	28-1/8	30-5/8	45-7/8	22	2	24--1-1/8	43-3/4	14

REV	DATE	DESCRIPTION	DWN	APP
5	09/17/21	REMOVE NOTE FOR RECOMMENDED FLOW DIRECTION FOR HP350	CA	TF
4	10/13/16	CORRECTED TITLE MDT WAS MTD	MZ	SS
3	09/12/16	REVISED FLOW DIRECTION NOTE	SAD	SS
2	05/15/15	ADDED VALVES SIZES 30 & 36 ADDED MDT 5 & 6S	AMJ	RF
1	01/28/10	2-27/32 WAS 3-7/16; 3-15/32 WAS 3-1/2	MZ	CEM

ACTUATOR SIZE	J	L	M	N	P	Q	R	NUMBER OF TURNS
MDT-2S	4-11/16	2	2-1/8	2	4-1/2	4-1/4	8-1/4	32
MDT-3S	5-5/8	2-7/16	3-1/4	3-5/32	5-5/8	5-3/8	10-3/8	30
MDT-4S	6-3/8	2-27/32	3-3/8	4	7-5/16	6-3/4	11-5/16	40
MDT-5S	7-9/16	3-15/32	4-1/2	5-1/2	8-3/4	10-7/16	17	44
MDT-5S	8-5/16	3-15/16	5-1/2	3-5/8	10-1/2	15-15/16	18-5/8	136
MDT-6S	10-3/16	5-1/16	7	8-1/4	12-5/8	18-9/16	26-1/2	215

PRATT®

TRITON HP-350 MECHANICAL JOINT ENDS
MDT
BURIED SERVICE ACTUATOR

SCALE NONE DATE 11/19/09

DRAWN BY AA CHECKED BY JR

APPROVED GA= BORDER

DRWG. NO. GA-12070 REV 5 ^{A/C}