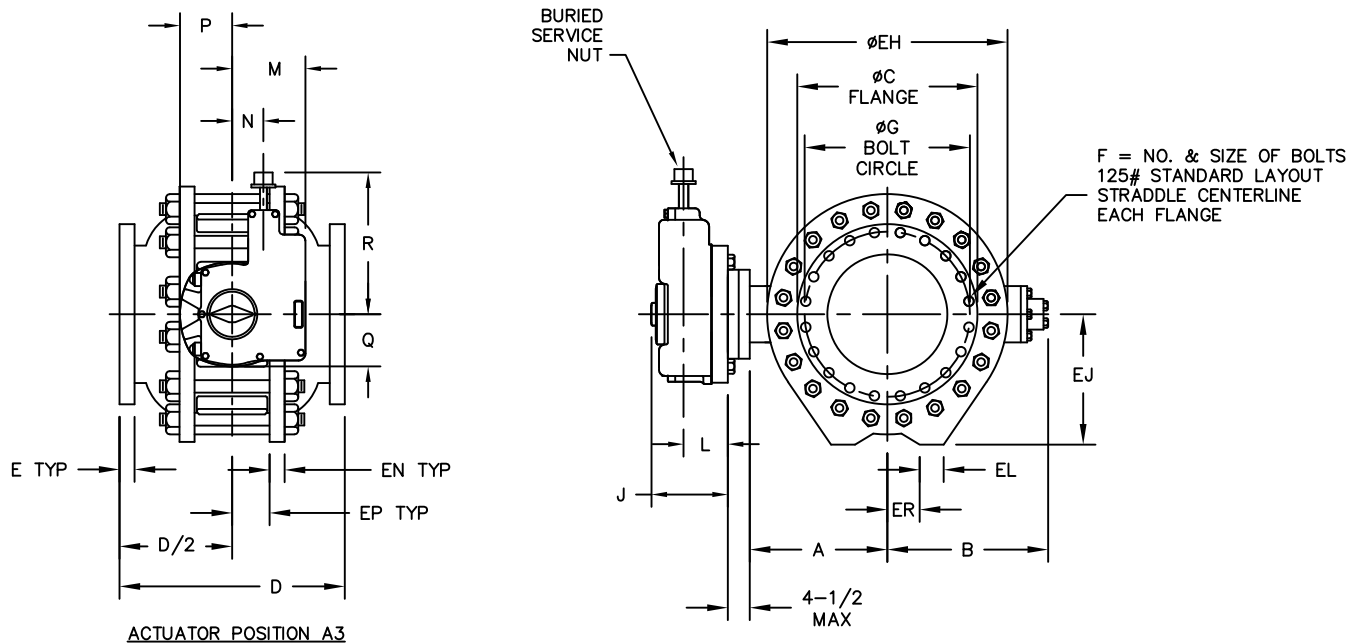


VALVE SIZE	A	B	C	D	E	F	G	EH	EJ	EL	EN	EP	ER
4	9-7/8	12-1/4	9	13	1-1/4	8 x 5/8	7-1/2	14-1/4	8-1/8	2-5/16	7/8	2	2-15/16
6	10-1/2	13-1/4	11	16	1	8 x 3/4	9-1/2	16-1/2	9	2-5/16	1-1/8	2-3/8	2-15/16
8	11-1/8	13-15/16	13-1/2	18	1-1/8	8 x 3/4	11-3/4	19	10-1/8	2-3/4	1-1/8	2-7/16	3-13/16
10	12-7/8	16-1/8	16	18-1/8	1-3/16	12 x 7/8	14-1/4	22	11-7/8	3-3/8	1	3-3/16	4-1/8
12	15	18-1/2	19	21	1-1/4	12 x 7/8	17	25-3/4	13-1/2	4-1/16	1-1/8	3-3/16	3-7/8
14	17-3/8	20-5/8	21	26-1/4	1-3/8	12 x 1	18-3/4	29-3/4	15-1/2	4-1/2	1-5/16	3-1/4	4-1/2
16	20-1/16	23-1/4	23-1/2	27	1-7/16	16 x 1	21-1/4	32-7/8	17-1/8	4-3/4	1-7/16	3-5/16	5
18	21-9/16	24-7/8	25	29	1-9/16	16 x 1-1/8	22-3/4	36-5/8	18-3/4	4-7/8	1-9/16	3-15/16	5-9/16
20	23-5/8	27-3/4	27-1/2	32	1-11/16	20 x 1-1/8	25	39-7/8	20-1/2	4-9/16	1-5/8	5-1/4	6-1/4
24	26-1/2	29-3/4	32	37	1-7/8	20 x 1-1/4	29-1/2	44-3/4	23-7/8	4-15/16	1-15/16	5-15/16	7-3/4
30	32-1/2	35-7/16	38-3/4	46	2-1/8	28 x 1-1/4	36	55-5/8	29-1/2	5-15/16	2-3/8	6-11/16	10-7/16
36	36-7/8	41-1/16	46	54	2-3/8	32 x 1-1/2	42-3/4	65-3/8	34-1/2	6-7/16	2-5/8	7-5/8	8-3/4
42	42-1/2	47-3/16	53	59-1/2	2-5/8	36 x 1-1/2	49-1/2	75-1/2	39-7/8	8-3/8	2-7/16	9-1/16	12-7/8
48	50-3/8	58-1/16	59-1/2	72	2-3/4	44 x 1-1/2	56	86-3/4	44-5/8	7-15/16	3-5/8	9-1/2	12-5/8

ACTUATOR SIZE	J	L	M	N	P	Q	R
WG12FB	3-9/16	2	4-1/8	2-5/8	4-1/8	4-1/8	9-1/2
WG14FB	3-3/4	2-1/16	5-3/16	3-1/2	5	5	10-1/4
WG15FB	4-3/16	2	7	4-7/8	5-15/16	5-15/16	12-7/8
WG20	5-1/8	2-5/16	8-5/16	3-1/2	6	5-1/4	13
WG30	6-7/16	3-5/16	10-1/8	4-1/4	7-5/16	6-5/16	14-5/16
WG40	8-7/8	3-3/4	13-7/16	2-3/4	9	8-3/8	18-3/8
WG50	10-11/16	4-9/16	17-1/16	4-15/16	10-5/8	10-5/8	20-5/8



NOTES:

- ALL DIMENSIONS SHOWN IN INCHES.
- "D" DIMENSION $\pm 1/8$ ".
- FOR BOLTS SMALLER THAN $\phi 1-3/4$, BOLT HOLES WILL BE $1/8$ " LARGER THAN DIAMETER OF BOLT. FOR BOLTS $\phi 1-3/4$ OR LARGER, BOLT HOLES WILL BE $1/4$ " LARGER THAN DIAMETER OF BOLT.
- DIMENSIONS AND DRILLING OF END FLANGES CONFORM TO THE AMERICAN CAST IRON FLANGE STANDARDS, CLASS 125 (B16.1).
- VALVES MANUFACTURED & TESTED IN ACCORDANCE WITH AWWA SPECIFICATION C-507 LATEST REVISION, CLASS 150.
- RECOMMENDATION FOR MATING FLANGES: WHERE INSULATING BUSHINGS ARE USED, IT IS NECESSARY THAT BOLT HOLES BE DRILLED OVERSIZE BY AN AMOUNT EQUAL TO TWO TIMES THE INSULATING SLEEVE THICKNESS TO MAINTAIN THE SAME MINIMUM CLEARANCE FOR BOLTS.
- VALVE ROTOR SHOWN IN OPEN POSITION.
- CAUTION: IT IS RECOMMENDED THAT VALVES BE INSTALLED INTO THE PIPING SYSTEM IN ACCORDANCE WITH AWWA M-11 IN ORDER TO PREVENT ANY UNDUE PIPING STRESS, DEFLECTION OR BENDING THAT MAY AFFECT THE PERFORMANCE OF THE VALVE.

REV	DATE	BY	DESCRIPTION	APP.
6/29/17	LF		UPDATED TITLEBLOCK	JUR
7/30/13	JUR		REVISED TABLE	RCB
PRATT				
GENERAL ARRANGEMENT DRAWING 150# DOUBLE SEATED BALL VALVE PRATT WORM GEAR W/BSN				
SCALE		DATE 9-14-11		
DRAWN BY CEM		CHECKED BY JL		
APPROVED		GA=BORDER		
DRWG. NO.	GA-12212	REV	2	AYC