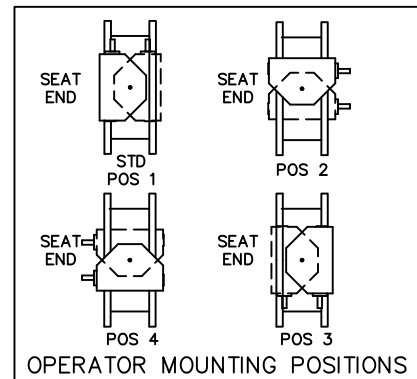
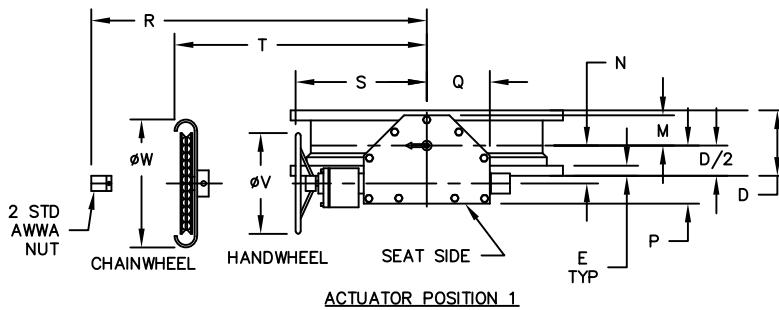


VALVE SIZE	A	B	C	D	E	F	G	H
78	50	54-5/8	93	18	3-1/4	64-2	89	6-7/8
84	54-7/8	59-5/8	99-3/4	24	3-7/8	64-2	95-1/2	8-5/16
96	68	75-3/4	113-1/4	24	4	68--2-1/4	108-1/2	10

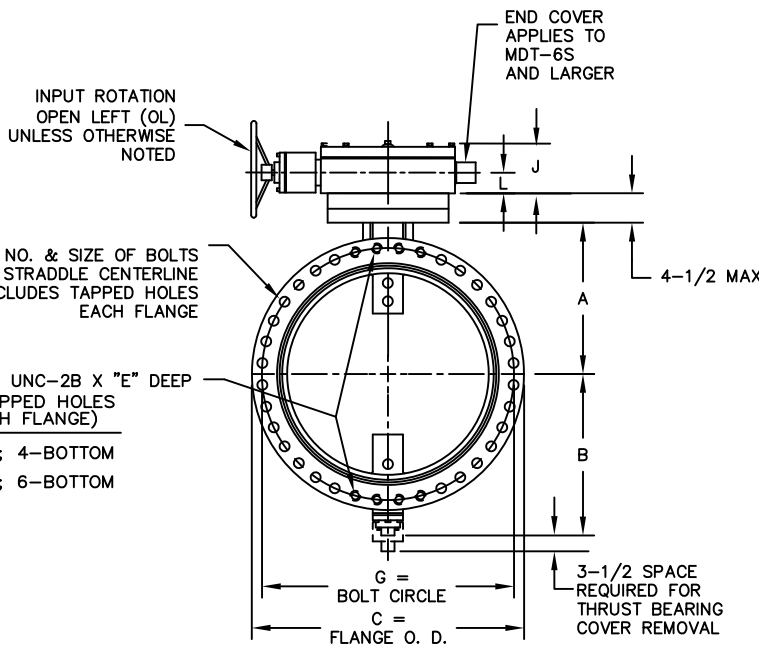
ACTUATOR SIZE	J	L	M	N	P	Q	R	S	T	V	W	NUMBER OF TURNS
MDT-5S	8-5/16	3-15/16	5-1/2	7	10-1/2	15-15/16	19-7/8	20	19-13/16	24	22-1/4	136
MDT-6S	9-7/8	5-1/16	7	8-1/4	12-5/8	14-3/16	26-1/2	27-3/4	27-1/2	24	22-1/4	215
MDT-10	12-3/16	5-7/8	11-15/16	11-5/8	19-1/16	19-29/32	28-1/4	33-1/4	33-1/4	24	26	526
MDT-15	16-3/16	7-7/8	16-1/4	17-1/2	27-1/8	27-1/8	35-1/2	40-1/2	40-1/2	30	32	1200

NOTES:

- ALL DIMENSIONS SHOWN IN INCHES.
- "D" DIMENSION $\begin{matrix} +1/4 \\ -0 \end{matrix}$
- BOLT HOLES WILL BE 1/4" LARGER THAN DIAMETER OF BOLT.
- DIMENSIONS AND DRILLING OF END FLANGES CONFORM TO AWWA C-207 CLASS D 150 PSI.
- RECOMMENDATION FOR MATING FLANGES: WHERE INSULATING BUSHINGS ARE USED, IT IS NECESSARY THAT BOLT HOLES BE DRILLED OVERSIZE BY AN AMOUNT EQUAL TO TWO TIMES THE INSULATING SLEEVE THICKNESS TO MAINTAIN THE SAME MINIMUM CLEARANCE FOR BOLTS.
- CAUTION: IT IS RECOMMENDED THAT VALVES BE INSTALLED INTO PIPING SYSTEM IN ACCORDANCE WITH AWWA M-11 TO PREVENT ANY UNDE PIPING STRESS, DEFLECTION OR BENDING THAT MAY EFFECT THE PERFORMANCE OF THE VALVE.



A. CHECK WITH FACTORY WHEN SELECTING ALTERNATE MIRROR ACTUATOR STYLES.



F = NO. & SIZE OF BOLTS STRADDLE CENTERLINE INCLUDES TAPPED HOLES EACH FLANGE

TAPPED HOLES "F" UNC-2B X "E" DEEP

VALVE SIZE	NO. TAPPED HOLES (EACH FLANGE)
78"	4-TOP; 4-BOTTOM
84" & 96"	6-TOP; 6-BOTTOM

REV	DATE	DESCRIPTION	DWN	APP
3	4/30/23	UPDATED TITLE BLOCK	RTF	RF
2	8/2/19	ECR 18-040 UPDATED NOTE 2	PB	CA
1	7/13/17	UPDATED ACTUATOR	LF	JUR

PRATT
a Mueller brand

GENERAL ARRANGEMENT DRAWING
150# XL FLANGED BUTTERFLY VALVE
AND MDT WITH
HW, NUT OR CHAINWHEEL

SCALE NONE DATE 5/9/12

DRAWN BY GEM CHECKED BY RTF

APPROVED _____ | GA=BORDER

DRWG. NO. GA-12246 REV 3 h/c