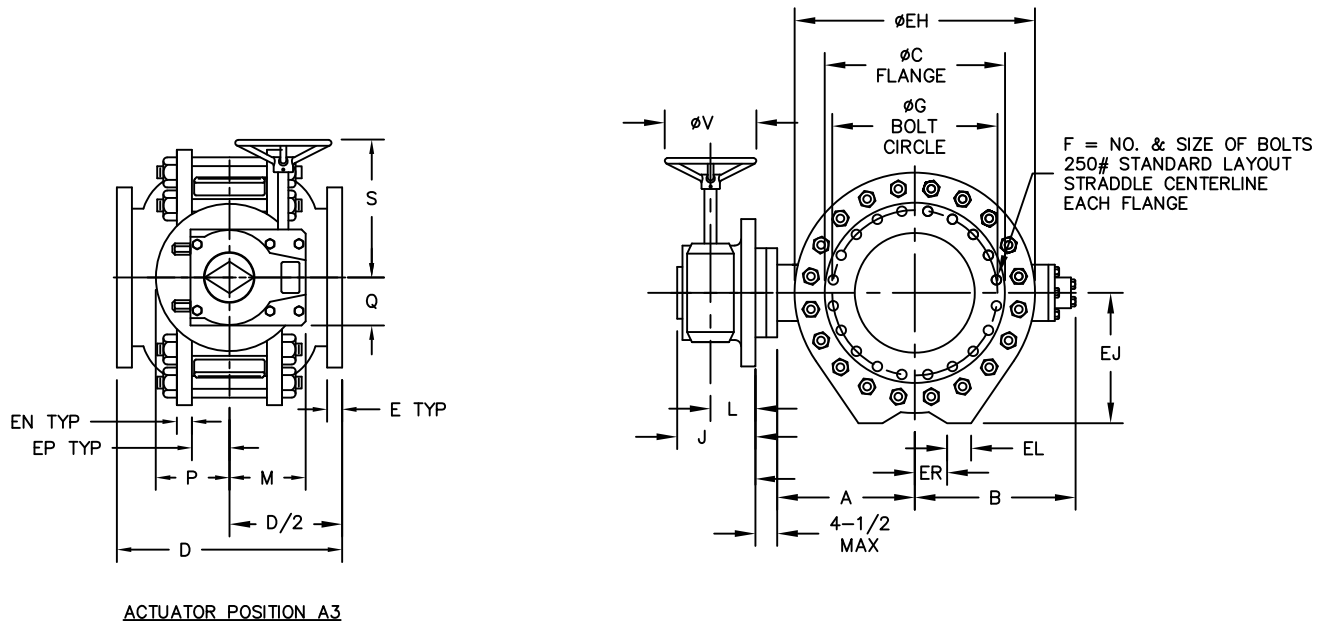


VALVE SIZE	A	B	C	D	E	F	G	EH	EJ	EL	EN	EP	ER
4	9-7/8	12-1/4	10	13	1-1/4	8 x 3/4	7-7/8	14-1/4	8-1/8	2-5/16	7/8	2	2-15/16
6	10-1/2	13-1/4	12-1/2	16	1-7/16	12 x 3/4	10-5/8	16-1/2	9	2-5/16	1-1/8	2-3/8	2-15/16
8	11-1/8	13-15/16	15	18	1-5/8	12 x 7/8	13	19	10-1/8	2-3/4	1-1/2	2-3/4	3-13/16
10	12-7/8	16-1/8	17-1/2	20-1/8	1-7/8	16 x 1	15-1/4	22	11-7/8	3-3/8	1-11/16	3-1/8	4-1/8
12	15	18-1/2	20-1/2	24	2	16 x 1-1/8	17-3/4	25-5/8	13-1/2	4-1/16	1-7/8	3-3/16	3-7/8
14	17-3/8	20-5/8	23	27-3/4	2-1/8	20 x 1-1/8	20-1/4	29-3/4	15-1/2	4-1/2	2-1/16	3-1/4	4-1/2
16	20-1/16	23-1/4	25-1/2	28-1/8	2-1/4	20 x 1-1/4	22-1/2	33	17-1/8	4-3/4	2-1/4	3-1/4	5
18	21-9/16	24-7/8	28	31	2-3/8	24 x 1-1/4	24-3/4	36-5/8	18-3/4	4-7/8	2-3/4	3-13/16	5-9/16
20	23-5/8	27-3/4	30-1/2	34	2-1/2	24 x 1-1/4	27	39-7/8	20-1/2	4-5/8	2-3/8	5-1/4	6-1/4
24	28	31-1/8	36	42-3/4	2-3/4	24 x 1-1/2	32	46	23-7/8	5	2-3/4	5-15/16	7-3/4
30	34-5/8	38-5/16	43	50-1/4	3	28 x 1-3/4	39-1/4	57-1/4	29-1/2	5-15/16	3-5/16	6-11/16	10-7/16
36	40-3/4	44-5/8	50	54	3-3/8	32 x 2	46	67-1/4	34-1/2	6-7/16	3-7/8	7-5/8	8-3/4

ACTUATOR SIZE	J	L	M	N	P	Q	S	V
WG12FB	3-9/16	2	8-1/4	2-5/8	8-5/16	2-9/16	12-1/4	14
WG14FB	3-3/4	2-1/16	10-3/16	3-1/2	10-1/32	3-1/4	14-3/16	18
WG15FB	4-3/16	2	17-15/16	4-7/8	11-13/16	4-3/8	16	18
WG20	5-1/8	2-5/16	8-5/16	3-1/2	6	5-1/4	16-5/8	18
WG30	6-7/16	3-5/16	10-1/8	4-1/4	7-5/16	6-5/16	18	18
WG40	8-7/8	3-3/4	13-7/16	2-3/4	9	8-3/8	22	24
WG50	10-11/16	4-17/32	17-3/64	4-29/32	10-5/8	10-5/8	24-7/32	24

REFER TO VENDOR DRAWING FOR CERTIFIED ACTUATOR DIMENSIONS



NOTES:

- ALL DIMENSIONS SHOWN IN INCHES.
- "D" DIMENSION  $\pm 1/8$ ".
- FOR BOLTS SMALLER THAN  $\phi 1-3/4$ , BOLT HOLES WILL BE  $1/8$ " LARGER THAN DIAMETER OF BOLT. FOR BOLTS  $\phi 1-3/4$  OR LARGER, BOLT HOLES WILL BE  $1/4$ " LARGER THAN DIAMETER OF BOLT.
- DIMENSIONS AND DRILLING OF END FLANGES CONFORM TO THE AMERICAN CAST IRON FLANGE STANDARDS, CLASS 250(B16.1).
- VALVES MANUFACTURED & TESTED IN ACCORDANCE WITH AWWA SPECIFICATION C-507 LATEST REVISION, CLASS 300.
- RECOMMENDATION FOR MATING FLANGES: WHERE INSULATING BUSHINGS ARE USED, IT IS NECESSARY THAT BOLT HOLES BE DRILLED OVERSIZE BY AN AMOUNT EQUAL TO TWO TIMES THE INSULATING SLEEVE THICKNESS TO MAINTAIN THE SAME MINIMUM CLEARANCE FOR BOLTS.
- VALVE ROTOR SHOWN IN OPEN POSITION.
- CAUTION: IT IS RECOMMENDED THAT VALVES BE INSTALLED INTO THE PIPING SYSTEM IN ACCORDANCE WITH AWWA M-11 IN ORDER TO PREVENT ANY UNDUE PIPING STRESS, DEFLECTION OR BENDING THAT MAY AFFECT THE PERFORMANCE OF THE VALVE.

REV	DATE	BY	DESCRIPTION	APP
6/29/17	LF		UPDATED TITLEBLOCK	JUR
7/12/13	JUR		REVISED TABLE	RCB

**PRATT**

GENERAL ARRANGEMENT DRAWING  
300# DOUBLE SEATED BALL VALVE  
PRATT WORMGEAR W/HW

SCALE NONE DATE 10/26/12

DRAWN BY AMJ CHECKED BY CEM

APPROVED \_\_\_\_\_ | **GA=BORDER**

DRWG. NO. GA-12267 REV 2 A/C