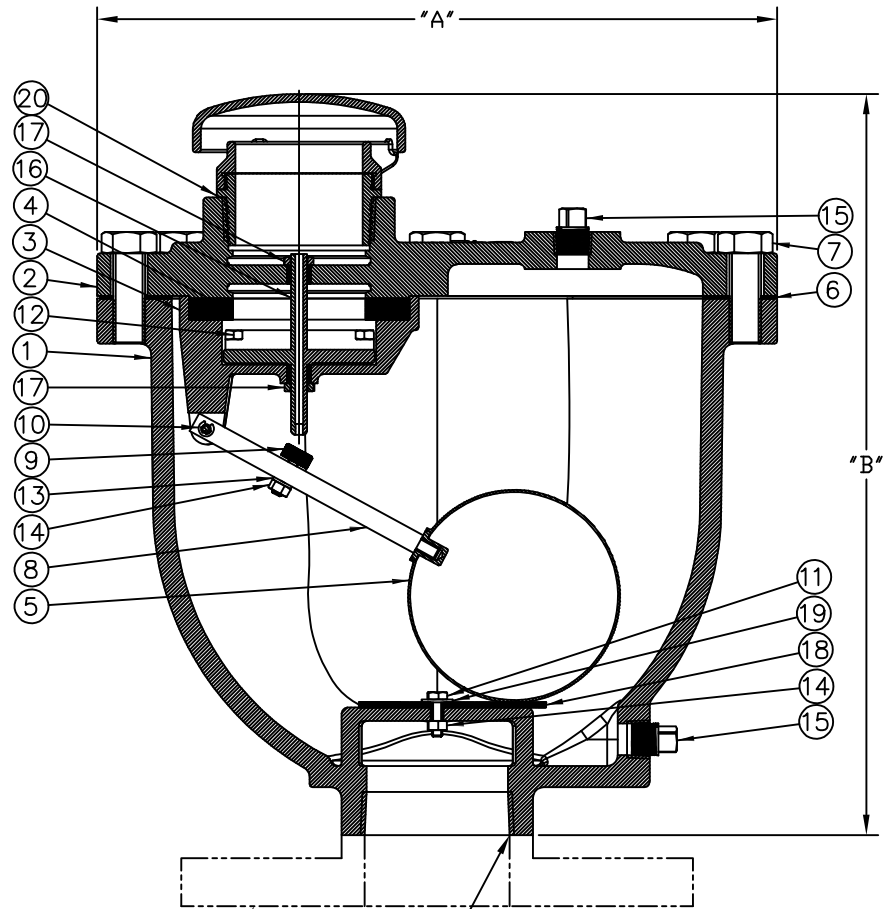


VALVE SIZE	ORIFICE SIZE	MAX C.W.P.	INLET TYPE	W	H	HC	PART NUMBER	WT. (LBS)
1"	5/64	300	NPT	11-3/8	10-1/2	11 5/8	WCV10-564-300-FS	40.6
2"	3/32	300	NPT	14	13	14-7/8	WCV20-332-300-FS	75.5
3"	3/32	300	NPT	16	15	17-9/16	WCV30-332-300-FS	114
3"	3/32	150	125#FLG	16	17	19-9/16	WCV30-332-150F-FS	114
3"	3/32	300	250#FLG	16	17-1/2	20-1/16	WCV30-332-300F-FS	114
4"	3/32	300	NPT	18-1/2	17	20	WCV40-332-300-FS	161.9
4"	3/32	150	125#FLG	18-1/2	19	22	WCV40-332-150F-FS	161.9
4"	3/32	300	250#FLG	18-1/2	19-1/2	22-1/2	WCV40-332-300F-FS	161.9



ITEM	DESCRIPTION	MATERIAL
1	BODY	DUCTILE IRON A536 (65-45-12)
2	COVER	DUCTILE IRON A536 (65-45-12)
3	LEVER FRAME	DUCTILE IRON A536 (65-45-12)
4	SEAT	EPDM
5	FLOAT	316SS
6	GASKET	NON-ASBESTOS FIBER
7	COVER BOLT	316SS
8	LEVER ARM	316SS
9	BUTTON	EPDM
10	PIVOT PIN/RET. RING	316SS/17-7 PH SS
11	CUSHION RETAINER	316SS
12	LEVER FRAME BRACKET	316SS
13	LOCK WASHER	316SS
14	LOCK NUT	316SS
15	1/2" PIPE PLUG	316SS
16	POPPET	316SS
17	GUIDE BUSHING	316SS
18	CUSHION	EPDM
19	WASHER	316SS
20	VENT CAP	DUCTILE IRON A536 (65-45-12)

VALVE SIZE NPT INLET
SEE TABLE

VALVE SIZE FLANGE INLET
SEE TABLE

REV	DATE	DESCRIPTION	DWN	APP
2	2/22/18	REVISED PART NUMBERS REVISED MATERIALS	JUR	SS
1	8/18/17	ADDED SIZES	SJS	SS

PRATT

1"-4" WCV SINGLE BODY COMBINATION
WATER AIR VACUUM VALVE
NPT / 125# FLG / 250# FLG

SCALE NONE DATE 3/25/16
DRAWN BY JUR CHECKED BY RF
APPROVED GA-BORDER
DRWG. NO. GA-12309 REV 2 1/2