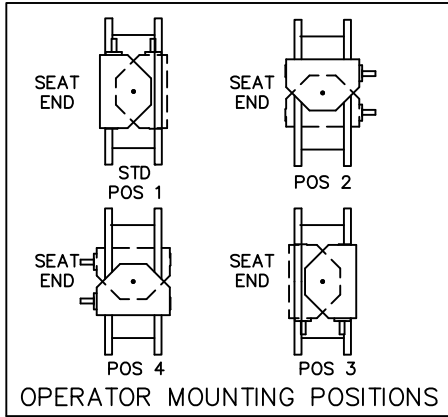
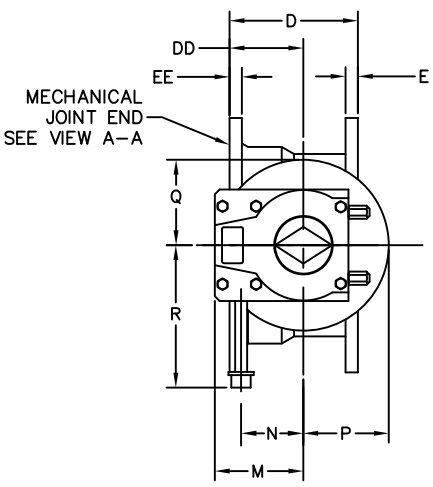


VALVE SIZE	A	B	C	CC	D	DD	E	EE	F	FF	G	GG	X
6	6-1/2	5-1/8	11	11	6-3/4	4-1/4	1-1/16	1-1/16	8--3/4	6--3/4	9-1/2	9-1/2	4-1/4
8	7-3/4	6-1/2	13-1/2	13-1/4	7-5/16	4-5/16	1-1/8	1-1/8	8--3/4	6--3/4	11-3/4	11-3/4	4-13/16
10	9	9-7/8	16	15-9/16	8-5/8	4-5/8	1-1/4	1-3/16	12--7/8	8--3/4	14-1/4	14	6-1/8
12	10-1/2	11-3/8	19	17-15/16	8-5/8	4-5/8	1-1/4	1-1/4	12--7/8	8--3/4	17	16-1/4	6-1/8
14	11-7/8	12-3/4	21	20-5/16	9-3/4	5-3/4	1-3/8	1-5/16	12--1	10--3/4	18-3/4	18-3/4	6-1/4
16	13-1/2	14-3/8	23-1/2	22-9/16	10	6	1-7/16	1-3/8	16--1	12--3/4	21-1/4	21	6-1/2
18	14-3/8	15-1/4	25	24-11/16	10-1/8	6-1/8	1-9/16	1-7/16	16--1-1/8	12--3/4	22-3/4	23-1/4	6-5/8
20	16	16-7/8	27-1/2	27-3/32	10-1/4	6-1/4	1-11/16	1-1/2	20--1-1/8	14--3/4	25	25-1/2	6-3/4

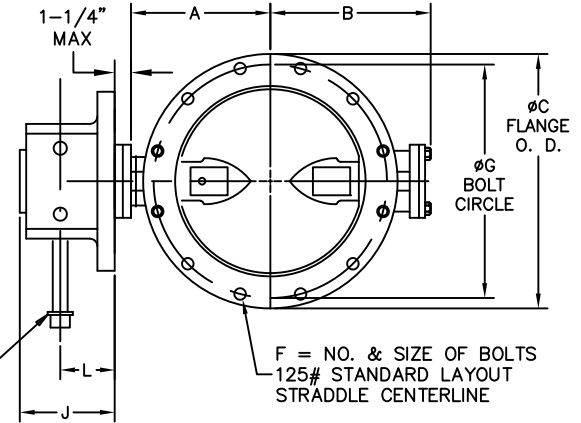


ACTUATOR SIZE	J	L	M	N	P	Q	R
WG12FB	3-9/16	2	4-1/8	2-5/8	4-1/8	4-1/8	9-1/2
WG14FB	3-3/4	2-1/16	5-3/16	3-1/2	5	5	10-1/4
WG15FB	4-3/16	2	7	4-7/8	5-15/16	5-15/16	12-7/8

- A. IGNORE SEAT SIDE DESIGNATION ON BFV SIZE 3" -20"
- B. CHECK WITH FACTORY WHEN SELECTING ALTERNATE MIRROR ACTUATOR STYLES.



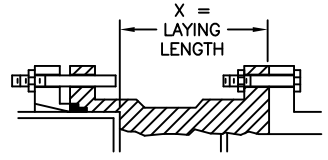
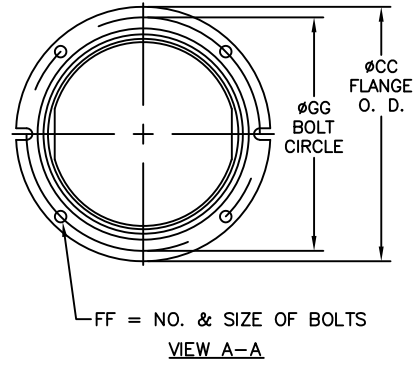
NOTE: INPUT ROTATION OPEN LEFT (OL) UNLESS OTHERWISE NOTED.



ACTUATOR POSITION A-3 (RELATIVE TO FLANGE SIDE)

NOTES:

1. ALL DIMENSIONS SHOWN IN INCHES.
2. "D" DIMENSION ±1/16" FOR 6" THRU 10" VALVES. "D" DIMENSION ±1/8" FOR 12" THRU 20" VALVES.
3. BOLT HOLES WILL BE 1/8" LARGER THAN DIAMETER OF BOLT.
4. DIMENSIONS AND DRILLING OF END FLANGE CONFORM TO THE AMERICAN CAST IRON FLANGE STANDARDS, CLASS 125 (B16.1).
5. DIMENSIONS AND DRILLING OF MECHANICAL JOINT END CONFORM TO ANSI/ AWWA C111/ A21.11.
6. VALVES MANUFACTURED & TESTED IN ACCORDANCE WITH AWWA SPECIFICATION C-504 LATEST REVISION, CLASS 250B.
7. RECOMMENDATION FOR MATING FLANGES: WHERE INSULATING BUSHINGS ARE USED, IT IS NECESSARY THAT BOLT HOLES BE DRILLED OVERSIZE BY AN AMOUNT EQUAL TO TWO TIMES THE INSULATING SLEEVE THICKNESS TO MAINTAIN THE SAME MINIMUM CLEARANCE FOR BOLTS.



INSTALLATION DIAGRAM
BOLTS, NUTS, GLANDS
AND GASKETS FURNISHED
BY OTHERS

2	5/4/23	ADDED POSITION CHART	RTF	RF
1	11/1/19	ADDED POSITION NOTE	AJM	RF
REV	DATE	DESCRIPTION	DWN	APP



6"-20" GROUNDHOG VALVE
FLANGE X MECHANICAL JOINT ENDS
PRATT WG BURIED SERVICE NUT
HP250II

SCALE	NONE	DATE	6/22/16
DRAWN BY	JUR	CHECKED BY	
APPROVED		GA=BORDER	
DRWG. NO.	GA-12340	REV	2
			A/C