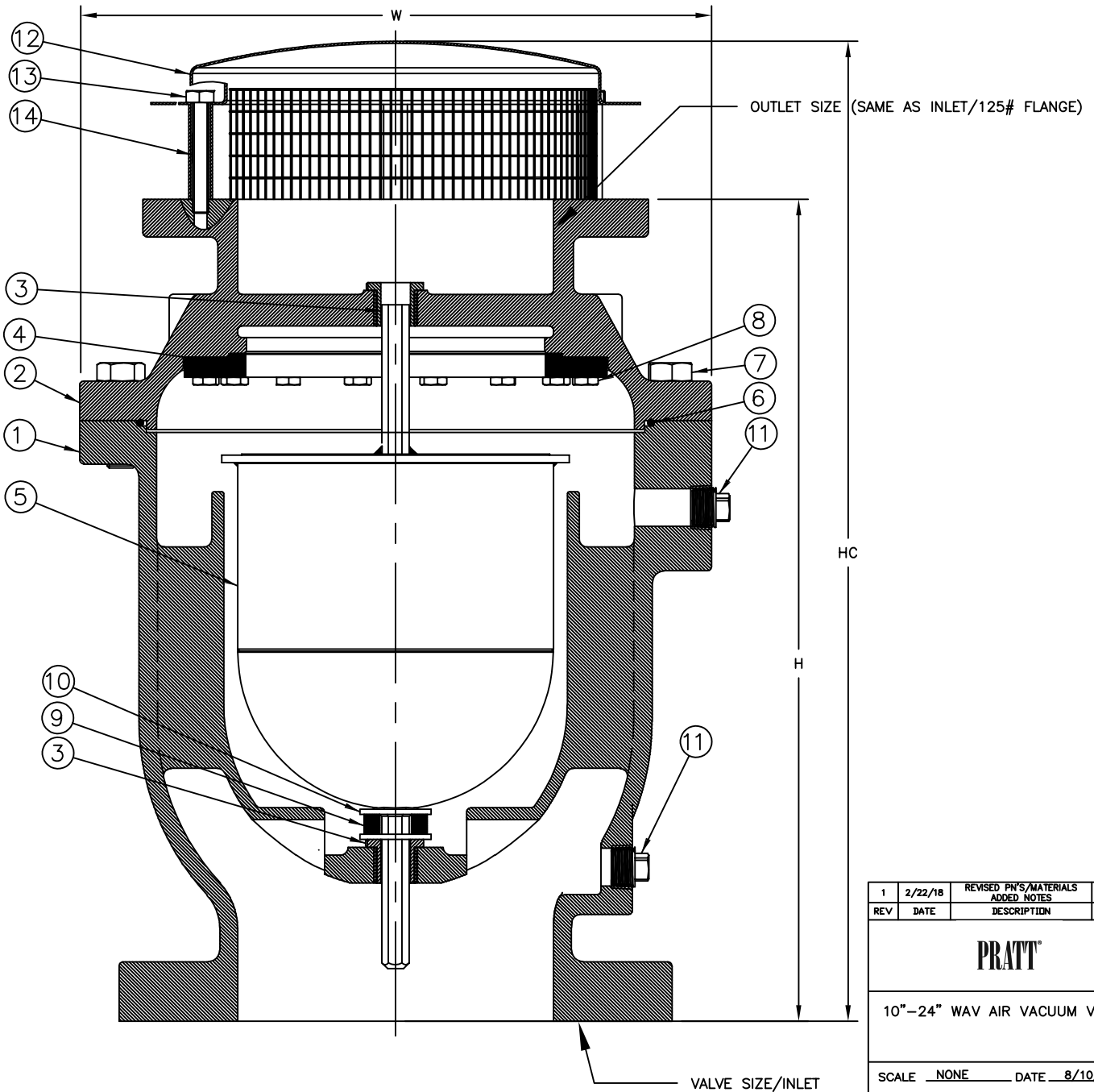


VALVE SIZE	MAX C.W.P	INLET CONNECTION	W	H	HC	PRATT PN	WT. LBS
10"	150	125# FLG	20"	26"	31"	WAV100-150F-FS	468
10"	300	250# FLG	20"	26"	31"	WAV100-300F-FS	468
12"	150	125# FLG	24"	30"	35"	WAV120-150F-FS	711
12"	300	250# FLG	24"	30"	35"	WAV120-300F-FS	711
14"	150	125# FLG	27"	32"	38"	WAV140-150F-FS	945
14"	300	250# FLG	27"	32"	38"	WAV140-300F-FS	945
16"	150	125# FLG	30-1/2"	34"	41"	WAV160-150F-FS	1275
16"	300	250# FLG	30-1/2"	34"	41"	WAV160-300F-FS	1275
20"	150	125# FLG	38-1/4"	42"	51"	WAV200-150F-FS	2081
20"	300	250# FLG	38-1/4"	42"	51"	WAV200-300F-FS	2081
24"	150	125# FLG	44"	50"	59"	WAV240-150F-FS	3053
24"	300	250# FLG	44"	50"	59"	WAV240-300F-FS	3053

ITEM	DESCRIPTION	MATERIAL
1	BODY	DUCTILE IRON A536 65-45-12
2	COVER	DUCTILE IRON A536 65-45-12
3	GUIDE BUSHING	316SS
4	SEAT	EPDM
5	FLOAT	316SS
6	O-RING	EPDM
7	COVER BOLT	316SS
8	SHOULDER SCREW	316SS
9	CUSHION BUMPER	EPDM
10	WASHER	316SS
11	1" PIPE PLUG	316SS
12	HOOD	CARBON STEEL
13	HOOD BOLT	316SS
14	SCREEN	STAINLESS STEEL



1	2/22/18	REVISED PN'S/MATERIALS ADDED NOTES	JUR	SS
REV	DATE	DESCRIPTION	DNV	APP

**PRATT**

10"-24" WAV AIR VACUUM VALVE

SCALE NONE DATE 8/10/17

DRAWN BY DSL CHECKED BY RF

APPROVED GA=BORDER

DRWG. NO. GA-12414 REV 1