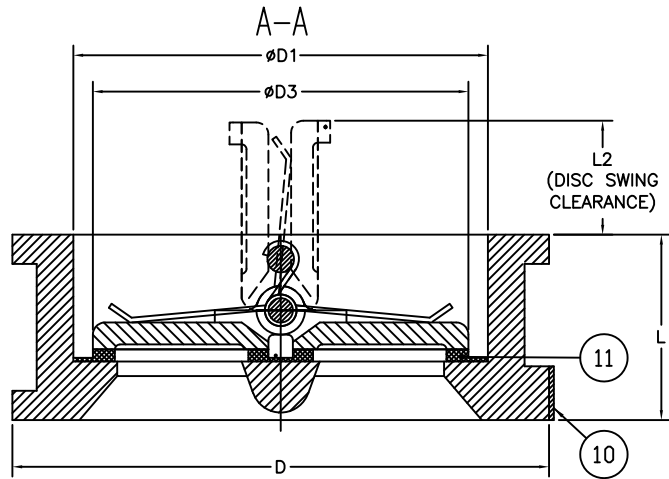
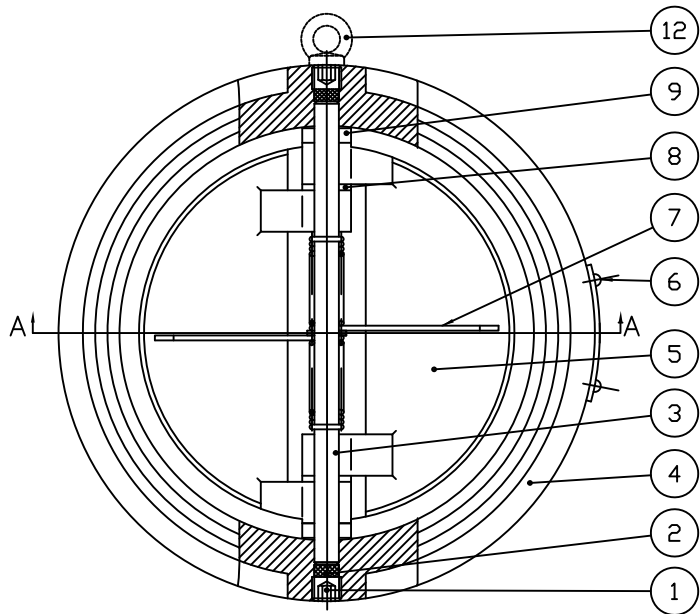


REV	ECN	DESCRIPTION	DATE	DWN	APP
1	N/A	UPDATED PER SUPPLIER LATEST DRAWING	6/18/18	JUR	JR
2	N/A	UPDATED TITLE	7/13/18	JUR	
3	N/A	ADDED ØD3 AND L2 DIM	8/31/20	TT	JL



↑
FLOW DIRECTION



NOTES:
1. * ONLY FOR 8" AND LARGER

SIZE	L	L2	ØD3	ØD1	ØD	WEIGHT(LBS)
2"	2.13	.26	2.24	2.56	4.10	7.49
2.5"	2.36	.49	2.87	3.15	4.84	9.39
3"	2.64	.47	3.39	3.70	5.31	12.52
4"	2.64	.91	4.17	4.61	6.85	13.62
6"	3.74	1.59	6.18	6.69	8.70	24.78
8"	5	1.79	8.11	8.58	10.98	39.13
10"	5.51	2.60	9.92	10.43	13.35	62.83
12"	7.13	2.52	11.65	12.20	16.10	96.29
14"	7.24	3.44	14.02	14.76	17.64	130.07
16"	7.52	4.06	15.35	16.38	20.16	177.47
18"	8.00	4.96	17.80	18.43	21.54	244.71
20"	8.62	5.53	19.53	20.24	23.78	260.14
24"	8.74	7.46	23.50	24.33	28.11	374.78

ITEM	DESCRIPTION	QTY	MATERIAL
1	PLUG	4	ASTM 1035
2	SEAL	4	EPDM
3	SHAFT	2	304 STAINLESS STEEL
4	BODY	1	DUCTILE IRON ASTM A-536 (65-45-12)
5	DISC	2	304 STAINLESS STEEL
6	SCREW	2	ALUMINUM
7	SPRING	2	316 STAINLESS STEEL
8	WASHER 1	4	304 STAINLESS STEEL
9	WASHER 2	2	304 STAINLESS STEEL
10	NAME PLATE	1	304 STAINLESS STEEL
11	SEAT	1	EPDM
12*	LIFTING RING	1	ASTM 1035

DRAWN BY: JUR
 DRAWN DATE: 12/20/17
 APPROVED BY: AA
 APPROVED DATE:
 PROPRIETARY INFORMATION
 DO NOT COPY OR REPRODUCE
 WITHOUT WRITTEN PERMISSION
 FILE LOCATION: H:\S\GA

PRATT

TITLE:
 2"-24" SERIES 740G
 WAFER TYPE DOUBLE DOOR
 CHECK VALVE 250 PSI

SIZE: A PART # ----- SHEET: 1 OF 1
 SCALE: NTS DRAWING: GA-12435 REV: 3

CAD