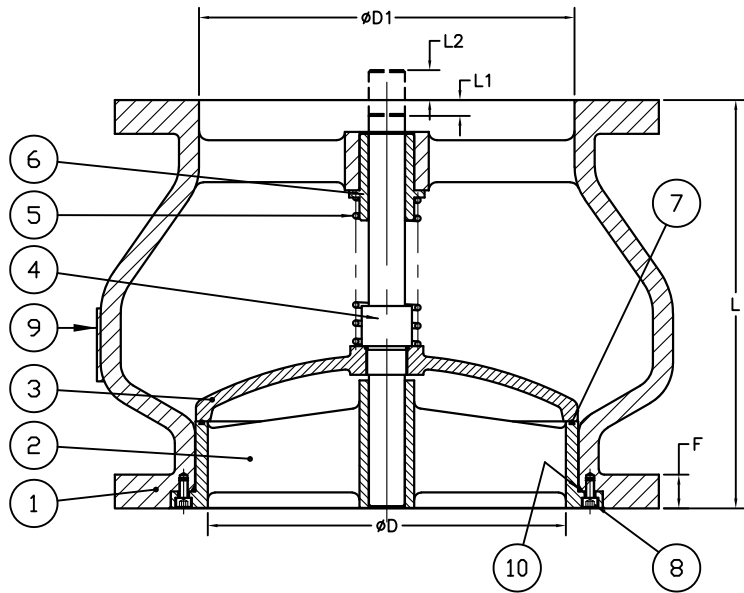


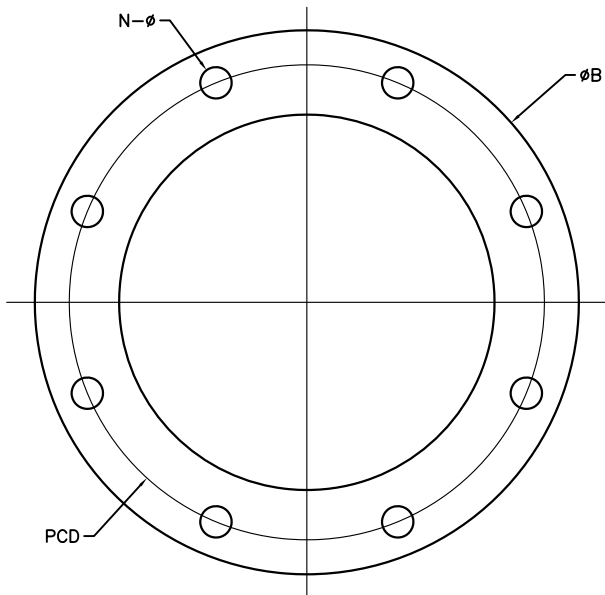
SIZE	L	L1	L2	ØD	ØD1	F	ØB	PCD	N-Ø	WEIGHT (LBS)
14"	15.75	-	0.73	13.70	13.97	1.38	21.00	18.75	12-1.12	415
16"	17.64	0.16	-	15.47	16.23	1.46	23.50	21.25	16-1.12	500
18"	18.75	0.56	-	17.00	17.56	1.57	25.00	22.75	16-1.25	631
20"	20.63	0.18	-	19.29	19.84	1.65	27.50	25.00	20-1.25	741
24"	24.00	-	1.52	22.99	23.82	1.93	32.00	29.50	20-1.38	1,209

REV	ECN	DESCRIPTION	DATE	DWN	APP
1	N/A	UPDATED PER SUPPLIER LATEST DRAWING	6/18/18	JUR	JR
2	N/A	UPDATED TITLE	7/13/18	JUR	
3	N/A	ADDED L1 AND L2 DIMENSION	4/22/20	TT	JL



↑
FLOW DIRECTION

ITEM	DESCRIPTION	QTY	MATERIAL
1	BODY	1	DUCTILE IRON ASTM A-536 (65-45-12)
2	SEAT	1	304 STAINLESS STEEL
3	DISC	1	304 STAINLESS STEEL
4	STEM	1	304 STAINLESS STEEL
5	14"/16" SPRING	1	316 STAINLESS STEEL
	18"-24" SPRING		304 STAINLESS STEEL
6	GUIDE BUSHING	1	BRONZE ASTM B584
7	SEAL	1	EPDM
8	SHCS	2	304 STAINLESS STEEL
9	NAME PLATE	1	304 STAINLESS STEEL
10	SEAT O-RING	1	EPDM



DRAWN BY: JUR	PRATT <small>• MUELLER brand</small>		C A D
DRAWN DATE: 12/20/17			
APPROVED BY: AA	TITLE: 14"-24" SERIES 821G GLOBE STYLE CHECK VALVE 250 PSI /W 125# FLG DRILLING		
APPROVED DATE:			
PROPRIETARY INFORMATION DO NOT COPY OR REPRODUCE WITHOUT WRITTEN PERMISSION			
FILE LOCATION: H:\S\GA	SIZE: A	PART # -----	SHEET: 1 OF 1
	SCALE: NTS	DRAWING: GA-12437	REV: 3