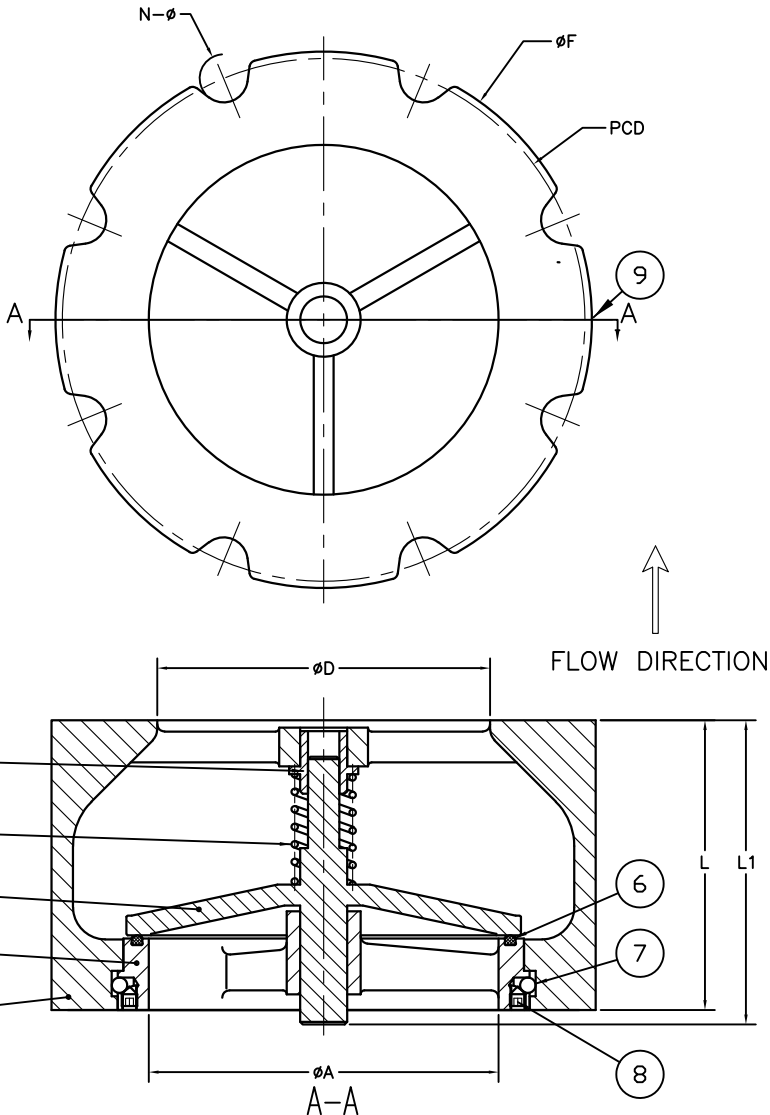


SIZE	L	L1	∅D	∅F	∅A	PCD	N-∅	WEIGHT(LBS)
2"	2.63	3.03	2.68	4.33	2.52	4.75	4-0.75	4.75
2.5"	2.87	3.07	3.07	5.35	2.83	5.50	4-0.75	8.00
3"	3.13	-	3.54	5.98	3.38	6.00	4-0.75	12.80
4"	4.00	-	4.25	7.00	4.50	7.50	8-0.75	15.50
6"	5.50	-	6.38	9.72	6.38	9.50	8-0.875	37.50
8"	6.50	-	8.50	13.37	8.37	11.75	8-0.875	80.00
10"	8.27	9.13	10.67	15.89	10.06	14.25	12-1	132.50
12"	11.26	12.28	12.24	16.34	12.12	17.00	12-1	176.50



REV	ECN	DESCRIPTION	DATE	DWN	APP
1	N/A	UPDATED PER SUPPLIER LATEST DRAWING	6/18/18	JUR	JR
2	N/A	UPDATED TITLE REMOVED 5" GASKET	7/13/18	JUR	
3	N/A	ADDED L1 DIMENSION	4/17/20	TT	JL


NOTES:

1. FLAT FLANGES AND RING GASKETS (RUBBER OR COMPRESSED FIBER) ARE REQUIRED.
2. THE MATING COMPANION FLANGE I.D. MUST OVERLAP THE VALVE SEAT. THIS IS REQUIRED TO PROVIDE PROPER SEAT RETENTION.
3. THE FLANGE GASKET MUST BE PROPERLY CENTERED AND OF THE SIZE INDICATED. THIS IS REQUIRED TO ACHIEVE A SEAL BETWEEN THE SEAT O.D. AND THE BODY I.D. INTERFACE AREA.

*GASKET SUPPLIED BY OTHERS

VALVE SIZE	MAX. ALLOWABLE ID OF FLG	*STD RING GASKET DIMENSIONS	
		GASKET I.D.	OD FOR 125LB WAFER TYPE
2"	2.76	2.56	4.09
2.5"	2.76	2.87	4.84
3"	3.35	3.50	5.35
4"	4.72	4.53	6.46
6"	6.5	6.42	8.66
8"	8.27	8.46	10.67
10"	10.24	10.16	13.03
12"	12.40	12.20	14.84

ITEM	DESCRIPTION	QTY	MATERIAL
1	BODY	1	DUCTILE IRON ASTM A-536 (65-45-12)
2	SEAT	1	304 STAINLESS STEEL
3	DISC	1	304 STAINLESS STEEL
4	SPRING	1	316 STAINLESS STEEL
5	GUDE BUSHING	1	BRONZE ASTM B584
6	SEAL	1	EPDM
7	STEEL BALL	1	304 STAINLESS STEEL
8	SET SCREW	2	316 STAINLESS STEEL
9	NAME PLATE	1	304 STAINLESS STEEL

DRAWN BY: JUR DRAWN DATE: 12/20/17 APPROVED BY: AA APPROVED DATE: PROPRIETARY INFORMATION DO NOT COPY OR REPRODUCE WITHOUT WRITTEN PERMISSION FILE LOCATION: H:\S\GA	<div style="text-align: right;">  <small>• MUELLER brand</small> </div> <div style="text-align: right;"> CAD </div>
TITLE: <div style="text-align: center;"> 2"-12" SERIES 720G WAFER SILENT CHECK VALVE 250 PSI FOR USE W/125LB FLG </div>	
SIZE: A SCALE: NTS	PART # ----- DRAWING: GA-12438
SHEET: 1 OF 1 REV: 3	