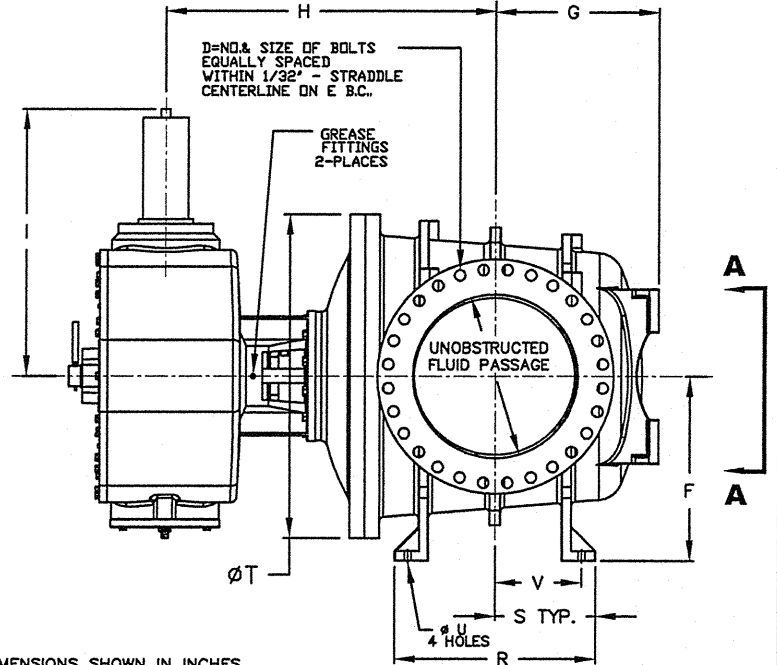
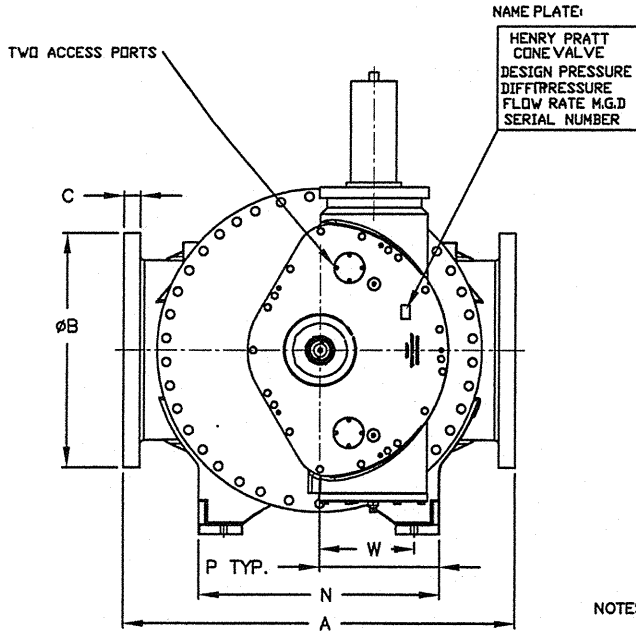


VALVE SIZE	AMERICAN CAST IRON FLANGE STANDART B16.1										F	G	H
	CLASS 125					CLASS 250							
	A	B	C	D	E	A	B	C	D	E			
8	24.43	13.50	1.12	8	11.75	24.43	15.00	1.62	12	13.00	9.00	9.87	30.50
10	29.06	16.00	1.19	12	14.25	29.06	17.50	1.88	16	15.25	11.88	12.36	38.70
12	31.00	19.00	1.25	12	17.00	32.50	20.50	2.00	16	17.75	15.00	13.50	41.57
14	38.50	21.00	1.38	12	18.75	38.50	23.00	2.12	20	20.25	18.25	15.50	44.50
16	42.50	23.50	1.44	16	21.25	44.00	25.50	2.25	20	22.50	18.13	16.06	45.18
18	41.750	25.00	1.56	16	22.75	43.38	28.00	2.38	24	24.75	19.00	17.50	45.50
20	47.00	27.50	1.69	20	25.00	48.63	30.50	2.50	24	27.00	22.00	17.75	55.00
24	56.00	32.00	1.88	20	29.50	57.75	36.00	2.75	24	32.00	23.00	23.50	48.25
30	64.00	38.75	2.12	28	36.00	65.75	43.00	3.00	28	39.25	34.38	27.56	80.25
36	77.50	46.00	2.38	32	42.75	79.75	50.00	3.38	32	46.00	31.00	32.13	67.37
42*	89.0	53.00	2.62	36	49.50	96.00	57.00	3.69	36	52.75	39.63	39.75	-
48*	102.00	59.50	2.75	44	56.00	102.00	65.00	4.00	40	60.75	47.63	43.25	-

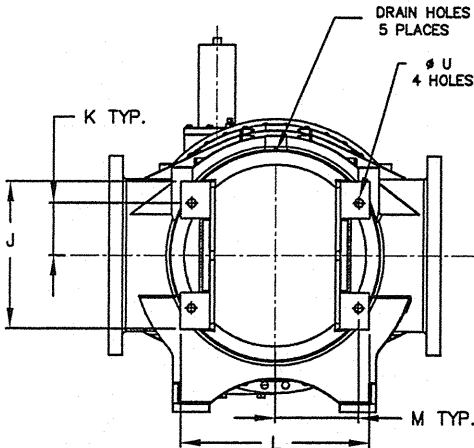
VALVE SIZE	I	J	K	L	M	N	P	R	S	T	V	W	Ø U	WEIGHT, LB
8	24.62	-	-	-	-	9.87	3.75	9.87	3.75	18.50	-	-	.63	840
10	24.62	16.00	7.00	13.00	5.00	13.00	5.00	14.00	6.00	23.25	-	-	.63	1,200
12	37.50	16.00	7.00	13.00	5.00	13.00	5.00	14.00	6.00	28.50	-	-	.63	2,050
14	37.50	20.00	8.25	19.00	8.68	19.00	8.50	17.50	6.63	31.50	-	-	.63	2,650
16	37.50	17.13	7.38	21.50	9.88	21.50	10.75	17.50	8.75	34.25	6.81	9.88	.81	3,250
18	37.50	17.50	7.38	25.25	11.38	25.25	11.38	17.50	7.50	36.25	-	-	1.13	3,500
20	38.75	19.63	8.87	30.00	14.00	30.00	14.00	22.63	10.00	41.38	-	-	1.13	4,900
24	38.75	N/A	41.00	N/A	N/A	44.00	22.00	20.25	12.00	47.63	7.125	19.00	1.13	6,750
30	61.00	N/A	52.00	N/A	N/A	47.00	23.50	36.50	16.13	60.0	-	-	1.75	16,200
36	61.00	N/A	61.00	N/A	N/A	47.00	23.50	38.88	17.12	68.90	-	-	1.75	23,500
42*	-	N/A	67.00	N/A	N/A	61.00	30.50	61.00	30.50	82.50	-	-	2.00	36,200
48*	-	N/A	69.00	N/A	N/A	64.00	32.00	34.00	17.00	92.75	-	-	2.00	51,700

* ACTUATOR SIZED UPON APPLICATION.

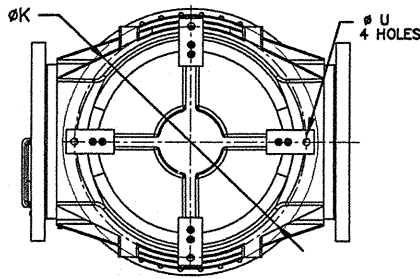


NOTES:

1. ALL DIMENSIONS SHOWN IN INCHES.
2. VALVES SHOWN WITH CYLINDER OPERATOR, MOTOR OR MANUAL OPERATORS ARE AVAILABLE.
3. DIMENSIONS FOR LARGER SIZES OR HIGHER WORKING PRESSURE ARE AVAILABLE UPON REQUEST.
4. VALVES ARE DESIGNED FOR VERTICAL OR HORIZONTAL SHAFT OPERATION. HORIZONTAL SHAFT IS A PREFERRED INSTALLATION.
5. IT IS RECOMMENDED THAT VALVES BE INSTALLED INTO THE PIPING SYSTEM IN ACCORDANCE WITH AWWA M-11 IN ORDER TO PREVENT ANY UNDUE PIPING STRESS, DEFLECTION OR BENDING THAT MAY EFFECT THE PERFORMANCE OF THE VALVE.
6. DIMENSIONS SHOWN ARE FOR REFERENCE ONLY. ACTUAL DIMENSIONS MAY VARY DUE TO APPLICATION.
7. SPLIT SHAFT DESIGN FOR 20"-48" VALVES



VIEW A-A
MOUNTING FOR VERTICAL INSTALLATION
FOR SIZES FROM 8" TO 20" VALVES



VIEW A-A
MOUNTING FOR VERTICAL INSTALLATION
FOR SIZES FROM 24" TO 48" VALVES

REV	DATE	DESCRIPTION	DWN	APP
PRATT				
GENERAL ARRANGEMENT DRAWING CONE VALVES W/ CYL OPERATOR 150# / 300# SERVICE PRESSURE				
SCALE NONE		DATE 1/30/18		
DRAWN BY SAD		CHECKED BY SD		
APPROVED <i>SD</i>		GA-BORDER		
DRWG. NO. GA-12443				REV 0