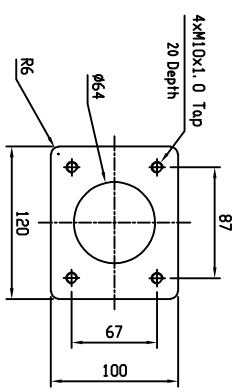
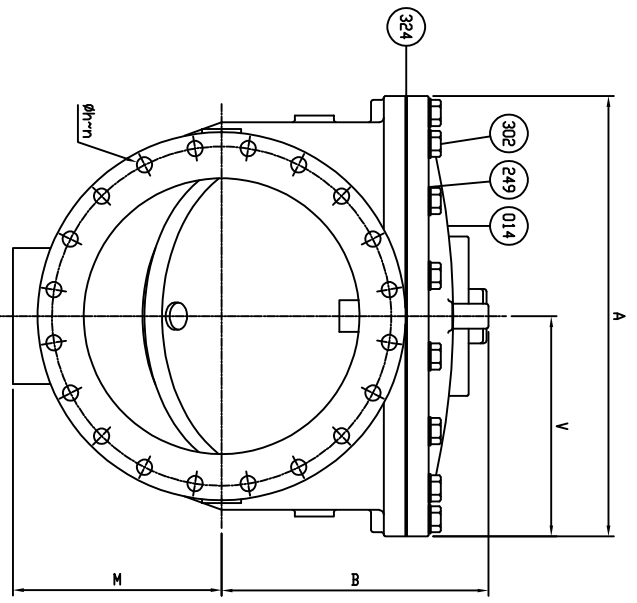
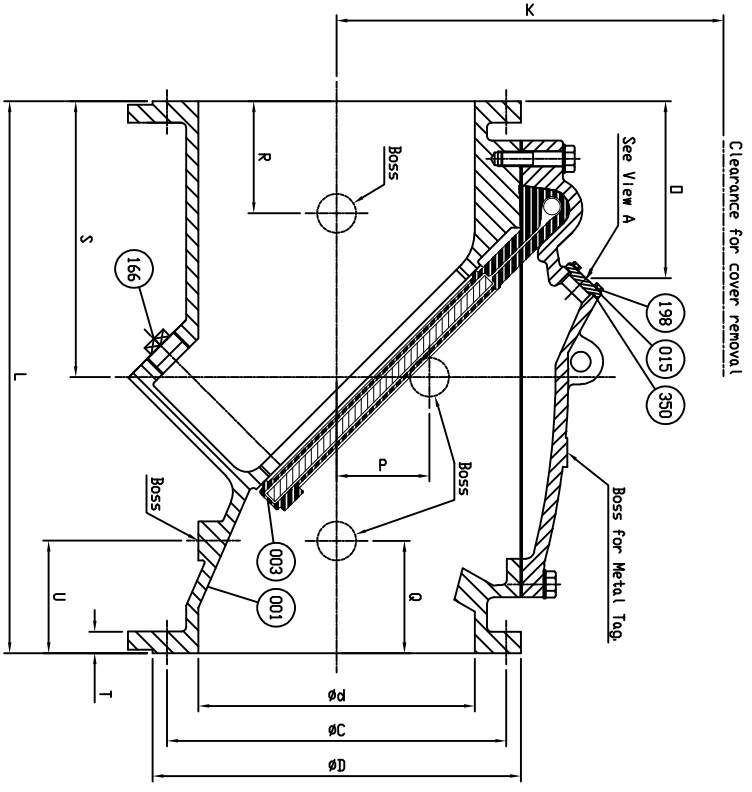


- Dimensions in inches unless otherwise noted.

SIZE In. mm.	L	ANSI B16.1 CL. 125				A	B	K	M	D	P	Q	R	S	U	V	Cover Bolt Size (in) x (mm) (1)	No. of Bolts (1)	Cover Bolt Size (in) x (mm) (2)	No. of Bolts (2)	Approx Weight (Lbs.)	Plug Size Diameter	Boss Diameter		
		ØD	ØC	Øh	n																			T	
18	450	40±½	25	22¾	1¼	16	1½/16	29.13	18.90	22.83	14.17	14.59	3.94	9.49	11.46	20.00	9.49	14.57	1-1/8 x 130	2	1-1/8 x 85	10	1170	2½	3.38
20	500	40±½	27½	25	1¼	20	1½/16	31.90	20.67	25.20	14.96	14.97	4.72	8.19	8.19	20.00	8.19	15.94	1-1/8 x 140	2	1-1/8 x 85	14	1590	3	3.38
24	600	48±½	32	29½	1¾	20	1½/16	38.27	23.19	28.35	18.15	15.40	8.07	9.76	9.76	24.00	9.76	19.13	1-1/4 x 140	2	1-1/4 x 100	14	2330	3	3.38



Remark - Seven Bosses

Part No.	Description	Material	Quantity
302	Cover Bolt	Galvanized Steel A307 Grade B (Standard) ASTM A193 Grade B8M (Optional) Ø316SS Øhastelloy	1set
350	O-Ring A	Rubber (EPDM) ASTM D2000 CA707 (Optional) ØRubber (BUNA-N) D 2000 BK 707 (Standard)	1
324	Cover Gasket	Rubber (EPDM) ASTM D2000 CAB07 (Optional) ØRubber (BUNA-N) D 2000 BK 707 (Standard)	1
249	Washer	Galvanized Steel ASTM A193 Grade B8M (Optional) Ø316SS Øhastelloy	1set
198	End Plate Bolt	Galvanized Steel A 307 Grade B	1set
166	Plug	Stainless Steel A 276 Type 304	1
015	End Plate	Ductile Iron A 536 Gr. 65-45-12	1
014	Cover	Ductile Iron A 536 Gr. 65-45-12	1
003	Disc	Steel A 36 ØRubber (EPDM) ASTM D2000 CA707 (Optional)	1
001	Body	Rubber (BUNA-N) D 2000 BK 707 (Standard) ØDuctile Iron A 536 Gr. 65-45-12	1
MATERIAL LIST			
HYDRD SHELL		500 PSI.	
HYDRD VALVE SEAT		250 PSI.	
TEST PRESSURE		250 PSI.	

CAST MARK:
PRATT
SIZE (INCH)
250 PSI
FIG 851
POURING DATE



MUELLER



ISSUE NUM.	DATE	REVISIONS	BY	CHK	TITLE
1					18'-24' FIG. 851
2					FLEX CHECK VALVE, 250PSI
3					ANSI 125 FLANGES
4					

BY: CA DATE: 07/24/20 SCALE: NONE
CHK'D BY: DIMENSION: REF DWG. INCHES USA2706E
DWG. NO. HP50676