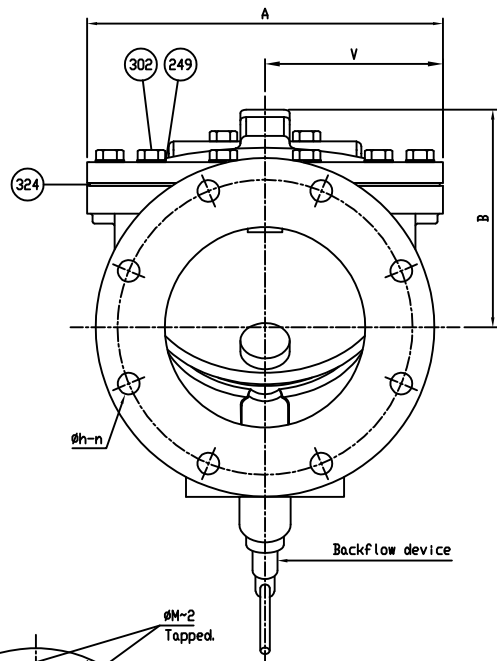
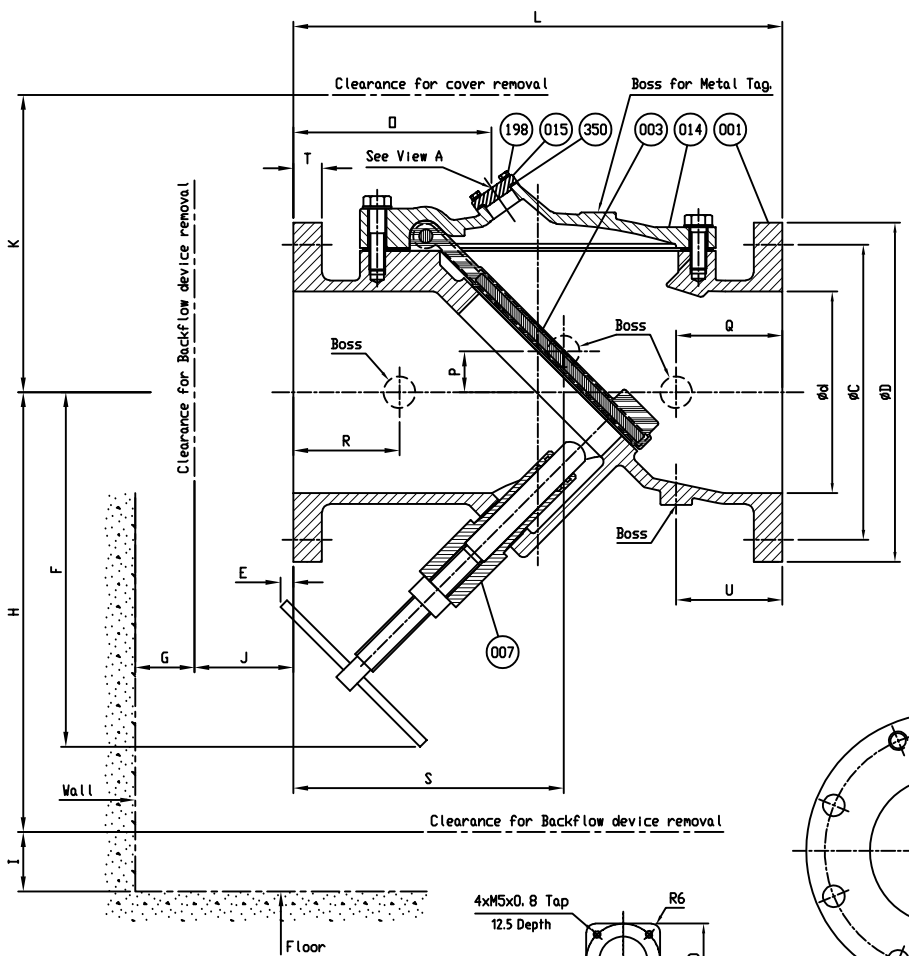


Dimensions in inches unless otherwise noted.

SIZE Ød	L	ANSI B16.1 CL. 125					A	B	E	F	G	I	H	J	K	D	P	Q	R	S	U	V	ØM	n1	Cover Bolt Size (in) x (mm) (1)	No. of Bolts (1)	Cover Bolt Size (in) x (mm) (2)	No. of Bolts (2)	Approx Weight (Lbs.)	Boss Diameter
		ØD	ØC	Øh	n	T																								
2 50	8±1/16	6	4 3/4	3/4	4	3/8	4.96	4.49	0.20	6.06	1.50	1.50	8.27	1.46	6.30	3.08	0.87	2.03	2.03	4.31	1.81	2.60	-	-	1/2-13 x 50	2	1/2-13 x 35	2	33	1
2 1/2 65	8 1/2±1/16	7	5 1/2	3/4	4	1/16	4.96	4.65	0.04	6.22	1.50	1.50	8.43	1.30	6.30	2.86	0.55	1.44	1.44	5.00	1.87	3.39	-	-	1/2-13 x 50	2	1/2-13 x 35	4	40	1
3 80	9 1/2±1/16	7 1/2	6	3/4	4	3/4	7.09	5.12	-0.28	6.38	1.50	1.50	8.50	1.22	6.69	3.80	0.59	1.87	1.87	5.45	1.89	3.76	-	-	1/2-13 x 50	2	1/2-13 x 35	4	46	1
4 100	11 1/2±1/16	9	7 1/2	3/4	4	1/4	9.06	5.83	0.20	7.28	2.50	2.50	9.69	2.60	7.68	4.72	0.98	2.51	2.51	6.26	2.51	4.55	-	-	1/2-13 x 50	2	1/2-13 x 38	4	79	1.25
6 150	14 1/2±1/16	11	9 1/2	3/8	8	1	11.02	7.60	0.19	12.80	3.00	3.00	16.18	6.57	8.86	5.83	1.42	3.01	3.01	7.99	3.01	5.43	Ø3/4x10TPI	6	1/2-13 x 55	2	1/2-13 x 40	10	130	1.25
8 200	19 1/2±1/16	13 1/2	11 3/4	3/8	8	1 1/2	14.96	8.54	0.51	14.13	5.75	5.75	17.52	3.94	10.24	7.90	1.61	4.23	4.23	10.81	4.23	7.09	-	-	5/8-11 x 65	2	5/8-11 x 45	10	244	1.25
10 250	24 1/2±1/16	16	14 1/4	1	12	1 3/8	20.08	11.54	1.46	17.95	5.75	5.75	22.83	6.34	14.17	10.71	2.17	4.34	4.34	14.21	4.34	9.74	-	-	7/8-9 x 110	2	7/8-9 x 65	10	444	2.75
12 300	27 1/2±1/16	19	17	1	12	1 1/4	22.05	12.83	1.10	19.96	6.50	6.50	24.88	5.98	15.75	10.74	2.17	4.61	4.61	15.72	4.61	10.63	-	-	7/8-9 x 100	2	7/8-9 x 65	10	581	3.38
14 350	31±1/16	21	18 3/4	1 1/8	12	1 3/8	23.62	13.46	0.83	22.60	6.50	6.50	28.31	6.54	16.93	15.49	2.95	4.84	4.84	18.44	4.84	12.91	-	-	1-8 x 100	2	1-8 x 80	10	724	3.38
16 400	36±1/16	23 1/2	21 1/4	1 1/8	16	1 1/2	25.19	14.96	-2.17	23.43	6.50	6.50	29.09	3.50	18.50	14.59	4.33	8.39	8.39	17.99	8.39	12.60	-	-	1-8 x 120	2	1-8 x 80	10	986	3.38

CAST MARK:
 PRATT
 SIZE (INCH)
 250 PSI
 FIG 851

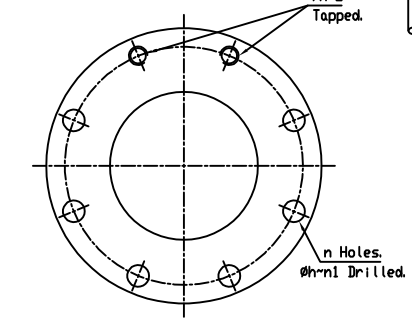
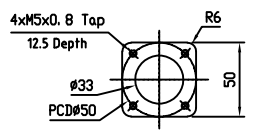
MUELLER
 POURING DATE



Remark - Dimension G and I represent the minimum clearance required to remove or install backflow device.
 - Dimension E does not extend past flange on valve size 3" and 16".
 - Seven Bosses.

NO.	PARTS	MATERIAL	ASTM DESIGNATION	Q'TY
302	Cover Bolt	Galvanized Steel	A307 Grade B (Standard)	1 set
		316SS	ASTM A193 Grade B8M (Optional)	
		Hastelloy	C276 (Optional for AIS)	
350	O-Ring A	Rubber (EPDM)	ASTM D2000 CA707 (Optional)	1
		Rubber (BUNA-N)	D 2000 BK 707 (Standard)	1
324	Cover Gasket	Rubber (EPDM)	ASTM D2000 CA807 (Optional)	1
		Rubber (BUNA-N)	D 2000 BK 707 (Standard)	1
249	Washer	Galvanized Steel	A307 Grade B (Standard)	1 set
		316SS	ASTM A193 Grade B8M (Optional)	
		Hastelloy	C276 (Optional for AIS)	
198	End Plate Bolt	Galvanized Steel	A 307 Grade B	1 set
007	Backflush Device	Stainless Steel	A 276 Type 304	1
015	End Plate	Ductile Iron	A 536 Gr. 65-45-12	1
014	Cover	Ductile Iron	A 536 Gr. 65-45-12	1
003	Disc	Steel	A 36	1
		Rubber (EPDM)	ASTM D2000 CA707 (Optional)	
		Rubber (BUNA-N)	D 2000 BK 707 (Standard)	
001	Body	Ductile Iron	A 536 Gr. 65-45-12	1

MATERIAL LIST		TEST PRESSURE
HYDRO SHELL		500 PSI.
HYDRO VALVE SEAT		250 PSI.
WORKING PRESSURE		250 PSI.



Detail of flange for size 6" (150) only.

View A
 Dimension are in (mm)

ISSUE NUM.	DATE	REVISIONS	BY	CHK	TITLE 2"-16" FIG. 851 FLEX CHECK VALVE W/ BACK-FLUSH DEVICE 250PSI, ANSI 125 FLANGES													
	1	11/05/21	UPDATED FACE TO FACE DIM FROM 6" VALVE FROM 15" TO 14"	CA		PJ												
	2																	
	3																	
<table border="1"> <tr> <td>BY:</td> <td>CA</td> <td>DATE:</td> <td>07/24/20</td> <td>SCALE:</td> <td>NONE</td> </tr> <tr> <td>CHK'D BY:</td> <td></td> <td>DIMENSION INCHES</td> <td></td> <td>REF DWG.</td> <td>USA2294K</td> </tr> </table>					BY:	CA	DATE:	07/24/20	SCALE:	NONE	CHK'D BY:		DIMENSION INCHES		REF DWG.	USA2294K	DWG. NO.	HP50677
BY:	CA	DATE:	07/24/20	SCALE:	NONE													
CHK'D BY:		DIMENSION INCHES		REF DWG.	USA2294K													