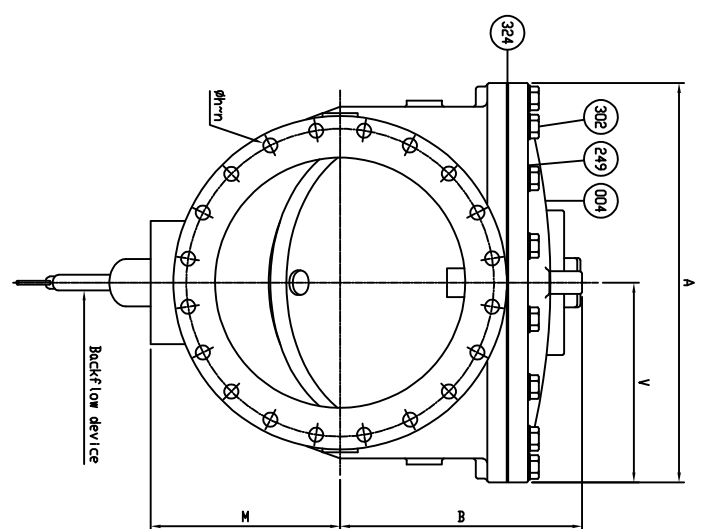
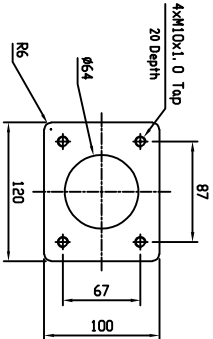
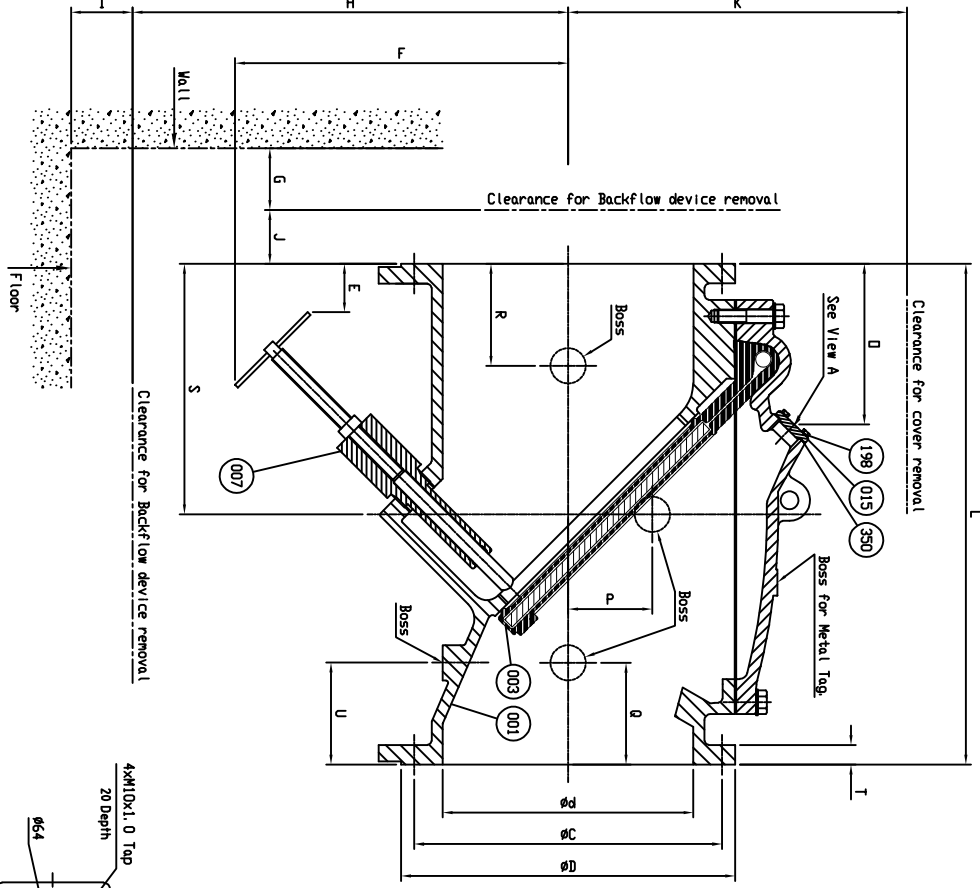


- Dimensions in inches unless otherwise noted.

SIZE In. mm.	L	ANSI B16.1 CL. 125				A	B	E	F	G	I	H	J	K	M	D	P	Q	R	S	U	V	Cover Bolt Size (in) x (mm) (1)	No. of Bolts (1)	Cover Bolt Size (in) x (mm) (2)	No. of Bolts (2)	Approx Boss Weight (lbs.)		
		ØD	ØC	Øh	n																							T	
18	450	40±½	25	22¾	1½	16	1½	29.13	18.66	0.94	26.42	6.50	32.95	5.55	22.83	14.17	14.59	3.94	9.49	11.46	20.00	9.49	14.57	1-1/8 x 130	2	1-1/8 x 85	10	1258	3.38
20	500	40±½	27½	25	1½	20	1½	31.10	19.61	1.02	28.15	8.00	35.51	6.34	25.20	14.96	14.97	4.72	8.19	12.00	8.19	15.94	1-1/8 x 140	2	1-1/8 x 85	14	1632	3.38	
24	600	48±½	32	29½	1¾	20	1¾	38.27	22.76	4.61	31.93	8.00	41.73	5.16	28.35	18.15	15.40	8.07	9.76	9.76	24.00	9.76	19.13	1-1/4 x 140	2	1-1/4 x 100	14	2519	3.38



CAST MARK:  
 PRATT  
 SIZE (INCH)  
 250 PSI  
 FIG 851  
 POURING DATE

Remark - Dimension G and I represent the minimum clearance required to remove or install backflow device.  
 - Seven Bosses.

NO.	DESCRIPTION	MATERIAL	QTY
302	Cover Bolt	Galvanized Steel A307 Grade B (Standard) A316SS Hastelloy	1set
350	D-Ring A	Rubber (EPDM) C276 (Optional for AIS)	1
324	Cover Gasket	Rubber (BUNA-N) ASTM D2000 CA707 (Optional) Rubber (EPDM) ASTM D2000 CA807 (Optional) Galvanized Steel A307 Grade B (Standard) D 2000 BK 707 (Standard)	1
249	Washer	Galvanized Steel ASTM A193 Grade 88M (Optional) A316SS Hastelloy C276 (Optional for AIS)	1set
198	End Plate Bolt	Galvanized Steel A 307 Grade B	1set
007	Plug	Stainless Steel A 276 Type 304	1
015	End Plate	Ductile Iron A 536 Gr. 65-45-12	1
014	Cover	Ductile Iron A 536 Gr. 65-45-12	1
003	Disc	Steel A 36	1
001	Body	Rubber (EPDM) ASTM D2000 CA707 (Optional) Rubber (BUNA-N) D 2000 BK 707 (Standard) Ductile Iron A 536 Gr. 65-45-12	1

ISSUE NUM.	DATE	REVISIONS	BY	CHK	TITLE
1					18"-24" FIG. 851 FLEX CHECK VALVE W/ BACK-FLUSH DEVICE 250PSI, ANSI 125 FLANGES
2					
3					
4					

BY:	DATE:	SCALE:
CA	07/24/20	NONE
CHK'D BY:	DIMENSION REF. DWG.	
	INCHES	USA22951

WORKING PRESSURE	250	PSI.
HYDRD SHELL	500	PSI.
HYDRD VALVE SEAT	250	PSI.
TEST PRESSURE	250	PSI.

DWG. NO.	HP50678
----------	---------