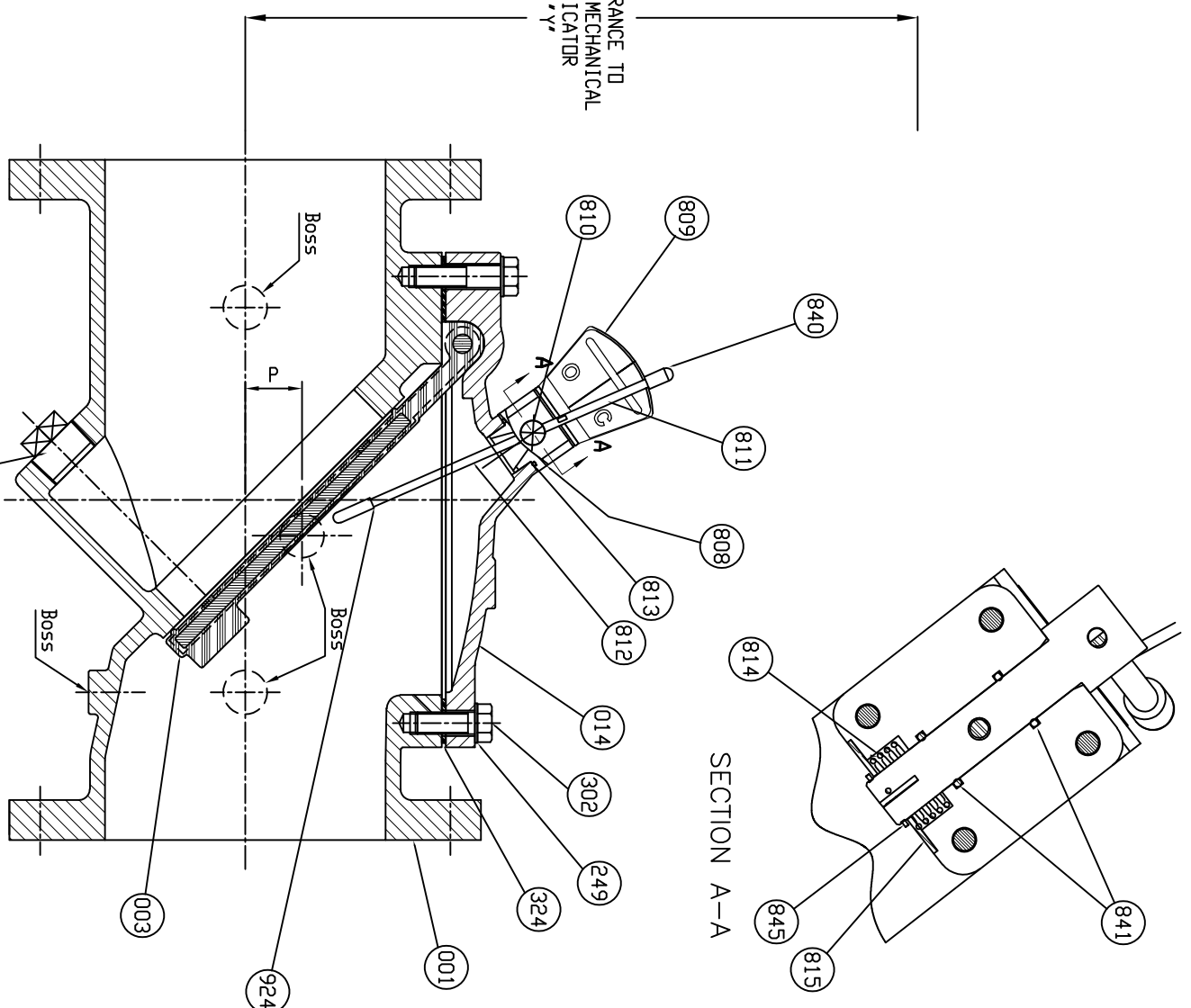


VALVE SIZE	HEIGHT REQ. 'y'
2	8.175
2.5	8.175
3	8.175
4	8.995
6	8.995
8	8.995
10	12.055
12	12.055
14	13.185
16	13.185
18	22.731
20	22.731
24	22.731



815	Locking Plate	Stainless Steel	A 276 Type 304	1
841	Shaft D-Ring	Buna-N	D2000 BK 707	2
845	Snap Ring	Stainless Steel	A 276 Type 304	1
814	Torsion Spring	Spring Steel	-	1
813	Housing D-Ring	Buna-N	D2000 BK 707	1
924	Acorn Hex Nut	Stainless Steel	A 276 Type 304	1
812	Actuator Pin	Stainless Steel	A 276 Type 304	1
840	Indic. Pin Cap	EPDM	-	1
811	Indicator Pin	Stainless Steel	A 276 Type 304	1
810	Indicator Shaft	Stainless Steel	A 276 Type 304	1
809	Bracket	Stainless Steel	A 276 Type 304	1
808	Indicator House	Delrin ASTM D792	ASTM D792	1
302	Cover Bolt	Galvanized Steel	A307 Grade B (Standard)	1set
		316SS	ASTM A193 Grade B8M (Optional)	
		Hastelloy	C276 (Optional for AIS)	
324	Cover Gasket	Rubber (EPDM)	ASTM D2000 CA807 (Optional)	1
		Rubber (BUNA-N)	D 2000 BK 707 (Standard)	
		Galvanized Steel	A307 Grade B (Standard)	
249	Washer	316SS	ASTM A193 Grade B8M (Optional)	1set
		Hastelloy	C276 (Optional for AIS)	
166	Plug	Stainless Steel	A 276 Type 304	1
014	Cover	Ductile Iron	A 536 Gr. 65-45-12	1
003	Disc	Rubber (EPDM)	ASTM D2000 CA707 (Optional)	1
		Rubber (BUNA-N)	D 2000 BK 707 (Standard)	
001	Body	Ductile Iron	A 536 Gr. 65-45-12	1

ISSUE NUM.	DATE	REVISIONS	BY	CHK	TITLE
1					2'-24" FIG. 851 FLEX CHECK VALVE W/ MECHANICAL INDICATOR 250PSI, ANSI 125 FLANGES
2					
3					
4					

PRATT a HUBBELL FIRM	BY: CA	DATE: 07/24/20	SCALE: NONE
	CHK'D BY:	DIMENSION:	INCHES

HYDRD SHELL	500 PSI.
HYDRD VALVE SEAT	250 PSI.
TEST PRESSURE	250 PSI.

SEE DRAWING HP50675 & HP50676 FOR DETAIL DIMENSIONS