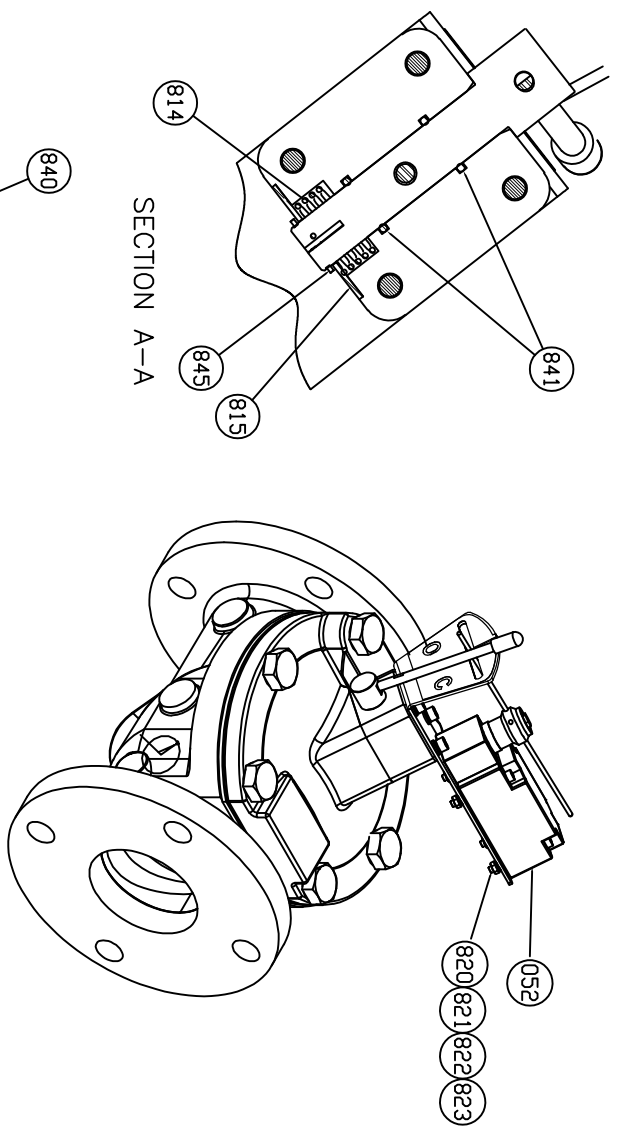
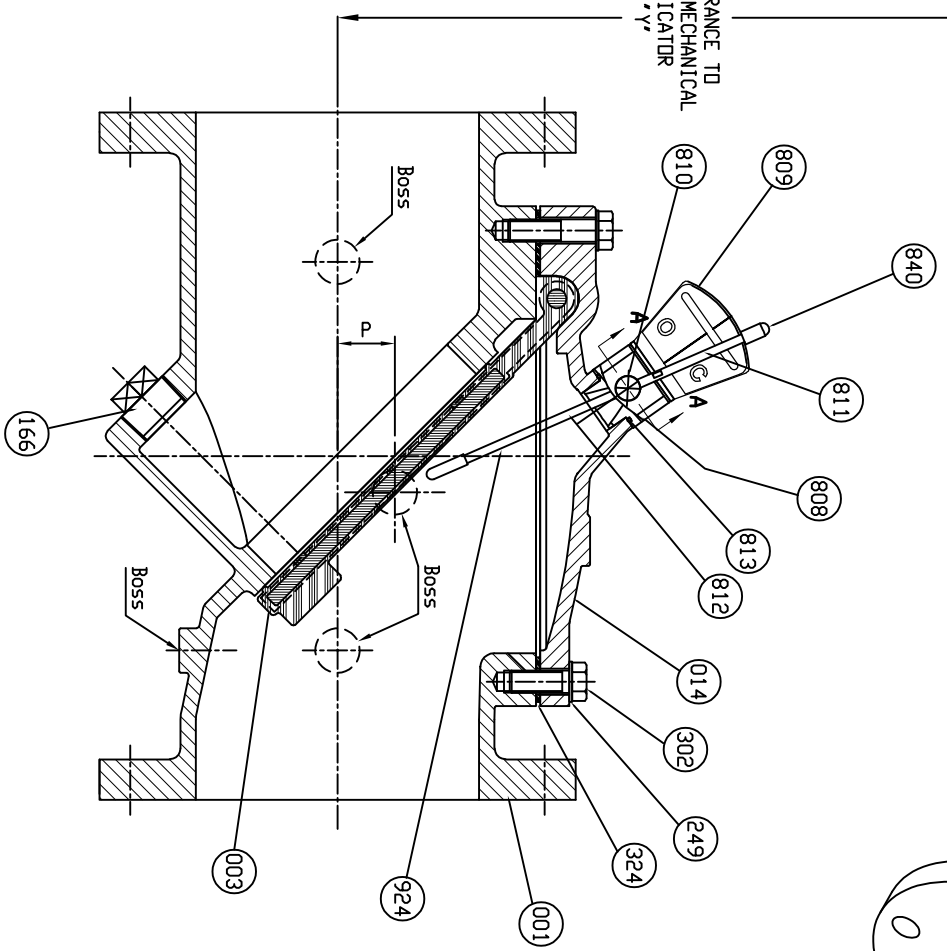


*SEE DRAWING HP50675, HP50676, & HP50681 FOR DETAIL DIMENSIONS & CLEARANCE FOR REMOVAL



SECTION A-A

CLEARANCE TO REMOVE MECHANICAL INDICATOR



PARTS	MATERIAL	ASTM DESIGNATION	QTY	HYDRD SHELL		HYDRD VALVE SEAT		TEST PRESSURE	
				500 PSI.	250 PSI.	250 PSI.	250 PSI.		
052	Limit Switch	<input type="checkbox"/> Nema 4 DPDT <input type="checkbox"/> Exp Nema 7 DPDT	1						
823	Shcs	Stainless Steel Type 316	4						
822	Hex Nut	Stainless Steel Type 316	4						
821	Lock Washer	Stainless Steel Type 316	4						
820	Flat Washer	Stainless Steel Type 316	4						
815	Locking Plate	Stainless Steel A 276 Type 304	1						
841	Shaft D-Ring	Buna-N D2000 BK 707	2						
845	Snap Ring	Stainless Steel A 276 Type 304	1						
814	Torsion Spring	Spring Steel -	1						
813	Housing D-Ring	Buna-N D2000 BK 707	1						
924	Acorn Hex Nut	Stainless Steel A 276 Type 304	1						
812	Actuator Pin	Stainless Steel A 276 Type 304	1						
840	Indic. Pin Cap	EPDM -	1						
811	Indicator Pin	Stainless Steel A 276 Type 304	1						
810	Indicator Shaft	Stainless Steel A 276 Type 304	1						
809	Bracket	Stainless Steel A 276 Type 304	1						
808	Indicator House	Delrin ASTM D792 ASTM D792	1						
302	Cover Bolt	<input type="checkbox"/> Galvanized Steel A307 Grade B (Standard) <input type="checkbox"/> 316SS ASTM A193 Grade B8M (Optional) <input type="checkbox"/> Hastelloy C276 (Optional for AIS)	1set						
324	Cover Gasket	<input type="checkbox"/> Rubber (EPDM) ASTM D2000 CA807 (Optional) <input type="checkbox"/> Rubber (BUNA-N) D 2000 BK 707 (Standard) <input type="checkbox"/> Galvanized Steel A307 Grade B (Standard)	1						
249	Washer	<input type="checkbox"/> 316SS ASTM A193 Grade B8M (Optional) <input type="checkbox"/> Hastelloy C276 (Optional for AIS)	1set						
166	Plug	Stainless Steel A 276 Type 304	1						
014	Cover	Ductile Iron A 536 Gr. 65-45-12	1						
003	Disc	Steel A 36	1						
001	Body	<input type="checkbox"/> Rubber (EPDM) ASTM D2000 CA707 (Optional) <input type="checkbox"/> Rubber (BUNA-N) D 2000 BK 707 (Standard) <input type="checkbox"/> Ductile Iron A 536 Gr. 65-45-12	1						

REVISIONS	DATE	BY	CHK	TITLE
1		CA		2"-24" FIG. 851 FLEX CHECK VALVE W/MECH. IND. & LIM. SWITCH 250PSI, ANSI 125 FLANGES
2				
3				
4				

ISSUE NUM.	DATE	BY	CHK	TITLE
1		CA		2"-24" FIG. 851 FLEX CHECK VALVE W/MECH. IND. & LIM. SWITCH 250PSI, ANSI 125 FLANGES
2				
3				
4				

DWG. NO. HP50683