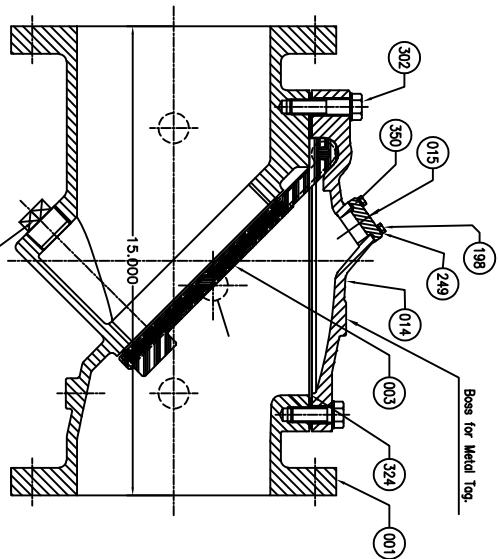
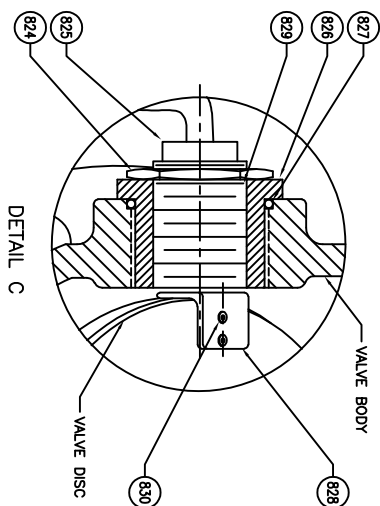


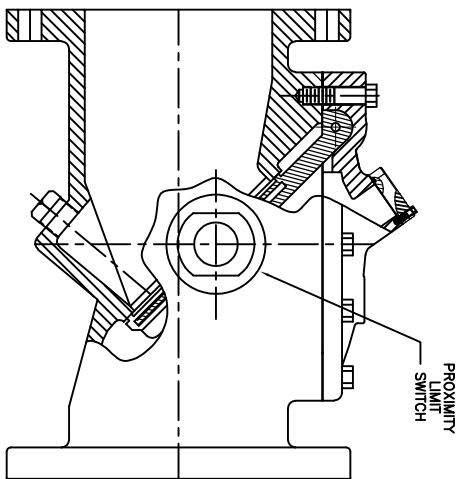
REMARK - SEVEN BOSSES



SECTION A-A



DETAIL C



NOTES:

1 - FLANGES ARE PER ANSI B16.1 CLASS 125/150 FLAT FACED.

\*SEE DRAWING HP50675 & HP50676 FOR DETAIL DIMENSIONS

NO.	PARTS	MATERIAL	ASTM DESIGNATION	QTY
830	Hardware	Stainless Steel	Type 304	2
829	Plug	Nylon	-	1
828	Sensor Bracket	Steel/Zinc	Coated Steel	1
827	O-ring	Rubber (Buna-n)	D 2000 BK 707 (Standard)	1
826	Adapter	Brass	B62	1
825	Proximity Switch			1
824	Lock Nut	Steel/Zinc	SAE Grade 5 - Zinc Plated	1
302	Cover Bolt	<input type="checkbox"/> Galvanized Steel <input type="checkbox"/> 316SS	ASTM A193 Grade B8M (Optional) C276 (Optional for AIS)	1 set
350	O-Ring A	<input type="checkbox"/> Rubber (EPDM) <input type="checkbox"/> Rubber (BUNA-N)	ASTM D2000 CA707 (Optional) D 2000 BK 707 (Standard)	1
324	Cover Gasket	<input type="checkbox"/> Rubber (EPDM) <input type="checkbox"/> Rubber (BUNA-N)	ASTM D2000 CA807 (Optional) D 2000 BK 707 (Standard)	1
249	Washer	<input type="checkbox"/> Galvanized Steel <input type="checkbox"/> 316SS	ASTM A193 Grade B8M (Optional) C276 (Optional for AIS)	1 set
198	End Plate Bolt	<input type="checkbox"/> Hastelloy <input type="checkbox"/> Galvanized Steel	A 307 Grade B A 276 Type 304	1 set
166	Plug	Stainless Steel	A 307 Grade B	1
015	End Plate	Ductile Iron	A 536 Gr-65-45-12	1
014	Cover	Ductile Iron	A 536 Gr-65-45-12	1
003	Disc	<input type="checkbox"/> Steel <input type="checkbox"/> Rubber (EPDM) <input type="checkbox"/> Rubber (BUNA-N)	A 36 ASTM D2000 CA707 (Optional) D 2000 BK 707 (Standard)	1
001	Body	Ductile Iron	A 536 Gr-65-45-12	1

WORKING PRESSURE	TEST PRESSURE
500 PSI	250 PSI
HYDRO VALVE SEAT	250 PSI
HYDRO SHELL	500 PSI

ISSUE NUM.	DATE	REVISIONS	BY	TITLE
1				
2				
3				

DATE:	09/01/20	SCALE:	NONE
CHK'D BY:	CA	DIMENSION:	INCHES
DWG. NO.:	HP50684		