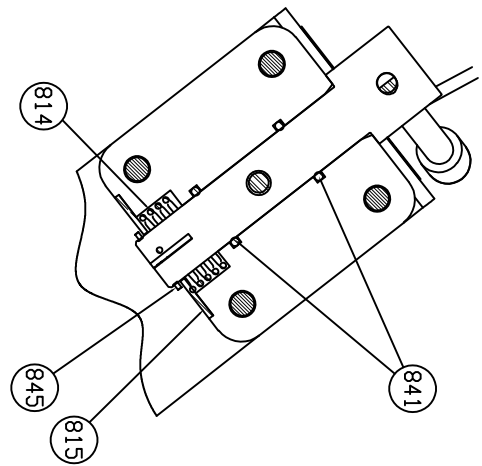


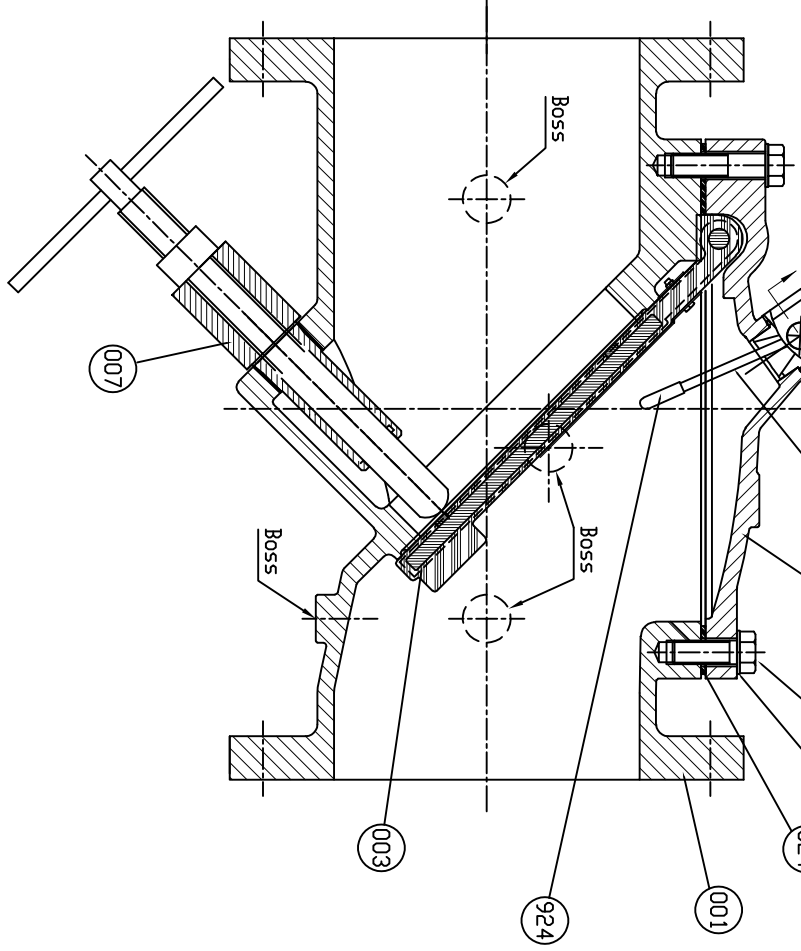
*SEE DRAWING HP50677, HP50678, HP50679 & HP50681 FOR DETAIL DIMENSIONS & CLEARANCE FOR REMOVAL

CLEARANCE TO REMOVE MECHANICAL INDICATOR

CLEARANCE TO REMOVE BACK FLUSH DEVICE



SECTION A-A



REMARK - SEVEN BOSSES

815	Locking Plate	Stainless Steel	A 276 Type 304	1
841	Shaft D-iring	Buna-N	D2000 BK 707	2
845	Snap Ring	Stainless Steel	A 276 Type 304	1
814	Torsion Spring	Spring Steel	-	1
813	Housing D-iring	Buna-N	D2000 BK 707	1
924	Acorn Hex Nut	Stainless Steel	A 276 Type 304	1
812	Actuator Pin	Stainless Steel	A 276 Type 304	1
840	Indic. Pin Cap	EPDM	-	1
811	Indicator Pin	Stainless Steel	A 276 Type 304	1
810	Indicator Shaft	Stainless Steel	A 276 Type 304	1
809	Bracket	Stainless Steel	A 276 Type 304	1
808	Indicator House	Delrin ASTM D792	ASTM D792	1
302	Cover Bolt	<input type="checkbox"/> Galvanized Steel <input type="checkbox"/> 316SS <input type="checkbox"/> Hastelloy	A307 Grade B (Standard) ASTM A193 Grade 88M (Optional) C276 (Optional for AIS)	1set
324	Cover Gasket	<input type="checkbox"/> Rubber (EPDM) <input type="checkbox"/> Rubber (BUNA-N) <input type="checkbox"/> Galvanized Steel <input type="checkbox"/> 316SS <input type="checkbox"/> Hastelloy	D 2000 BK 707 (Standard) ASTM D2000 CA807 (Optional) A307 Grade B (Standard) ASTM A193 Grade 88M (Optional) C276 (Optional for AIS)	1
249	Washer	<input type="checkbox"/> Stainless Steel <input type="checkbox"/> Hastelloy	A 276 Type 304 C276 (Optional for AIS)	1set
007	Backflush Device	Stainless Steel	A 276 Type 304	1
014	Cover	Ductile Iron Steel	A 536 Gr. 65-45-12 A 36	1
003	Disc	<input type="checkbox"/> Rubber (EPDM) <input type="checkbox"/> Rubber (BUNA-N) <input type="checkbox"/> Ductile Iron	ASTM D2000 CA707 (Optional) D 2000 BK 707 (Standard) A 536 Gr. 65-45-12	1
001	Body	Ductile Iron	A 536 Gr. 65-45-12	1

HYDR. SHELL		500	PSI.
HYDR. VALVE SEAT		250	PSI.
TEST PRESSURE		250	PSI.
WORKING PRESSURE		250	PSI.
<p>PRATT MULLER Tool</p>			
BY	DATE	SCALE	
CA	07/24/20	NONE	
CHK'D BY	DIMENSION	INCHES	
<p>2'-24" FLEX CHECK VALVE FIG. 851 W/BFD & MECH. INDICATOR 250PSI, ANSI 125 FLANGES</p>			
DWG. NO.	HP50685		

ISSUE NUM.	DATE	REVISIONS	BY	CHK	TITLE
1					
2					
3					
4					