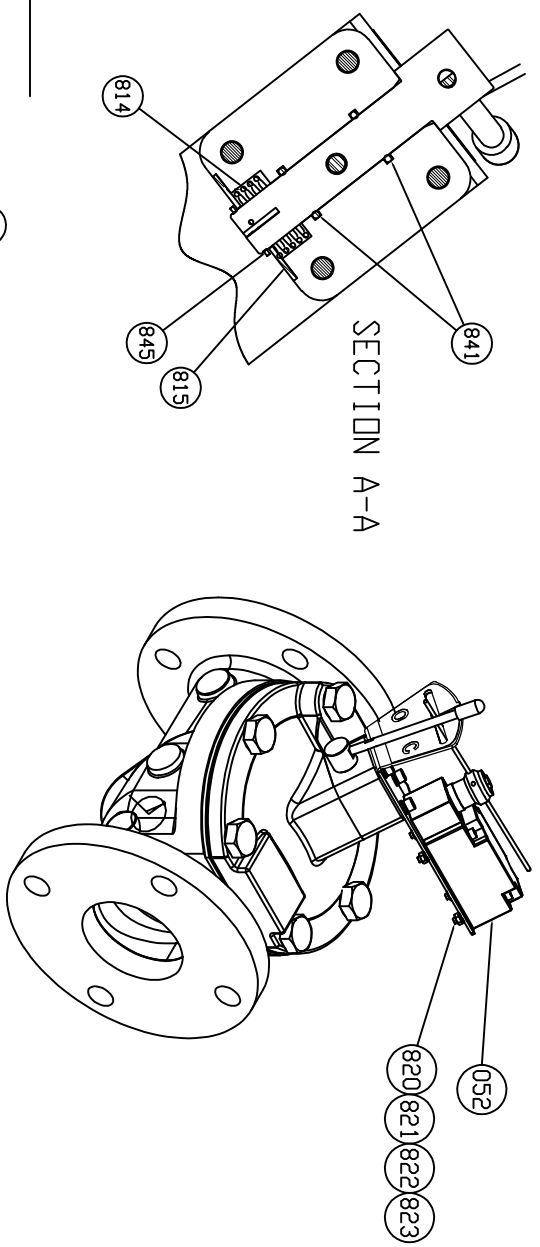
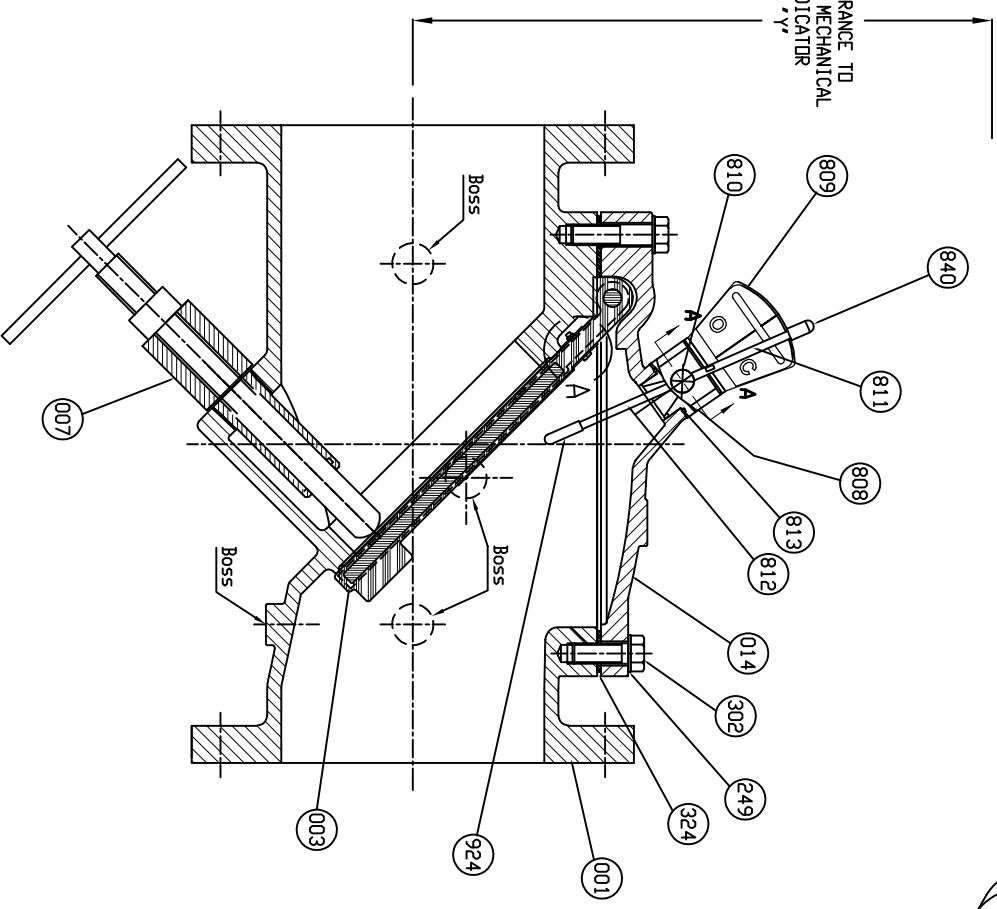


*SEE DRAWING HP50677, HP50678, HP50679 & HP50681 FOR DETAIL DIMENSIONS & CLEARANCE FOR REMOVAL



SECTION A-A



CLEARANCE TO REMOVE MECHANICAL INDICATOR

REMARK - SEVEN BOSSES

052	Limit Switch	<input type="checkbox"/> Nema 4 SPDT <input type="checkbox"/> Nema 4 DPDT	<input type="checkbox"/> Exp Nema 7 SPDT <input type="checkbox"/> Exp Nema 7 DPDT	1
823	Sleeves	Stainless Steel	Type 316	4
822	Hex Nut	Stainless Steel	Type 316	4
821	Lock Washer	Stainless Steel	Type 316	4
820	Flat Washer	Stainless Steel	Type 316	4
815	Locking Plate	Stainless Steel	A 276 Type 304	1
841	Shaft D-Ring	Buna-N	DE000 BK 707	2
845	Snap Ring	Stainless Steel	A 276 Type 304	1
814	Torsion Spring	Spring Steel	-	1
813	Housing D-Ring	Buna-N	DE000 BK 707	1
924	Acorn Hex Nut	Stainless Steel	A 276 Type 304	1
812	Actuator Pin	Stainless Steel	A 276 Type 304	1
840	Indic. Pin Cap	EPDM	-	1
811	Indicator Pin	Stainless Steel	A 276 Type 304	1
810	Indicator Shaft	Stainless Steel	A 276 Type 304	1
809	Bracket	Stainless Steel	A 276 Type 304	1
808	Indicator House	Delrin ASTM D792	ASTM D792	1
302	Cover Bolt	<input type="checkbox"/> Galvanized Steel <input type="checkbox"/> 316SS	A307 Grade B (Standard) ASTM A193 Grade B8M (Optional)	1set
324	Cover Gasket	<input type="checkbox"/> Hastelloy <input type="checkbox"/> Rubber (EPDM) <input type="checkbox"/> Rubber (BUNA-N)	C276 (Optional for AIS) D 2000 BK 707 (Optional) A307 Grade B (Standard)	1
249	Washer	<input type="checkbox"/> Galvanized Steel <input type="checkbox"/> 316SS	ASTM A193 Grade B8M (Optional) C276 (Optional for AIS)	1set
007	Backflush Device	Stainless Steel	A 276 Type 304	1
014	Cover	Ductile Iron Steel	A 536 Gr. 65-45-12 A 36	1
003	Disc	<input type="checkbox"/> Rubber (EPDM) <input type="checkbox"/> Rubber (BUNA-N)	ASTM D2000 CA707 (Optional) D 2000 BK 707 (Standard)	1
001	Body	Ductile Iron	A 536 Gr. 65-45-12	1

ISSUE NUM.	DATE	REVISIONS	BY	CHK	TITLE	SCALE
1			CA		2"-24" FLEX CHECK VALVE FIG. 851	NONE
2					V/BFD, LIM. SWITCH & MECH. IND.	
3					250PSI, ANSI 125 FLANGES	
4						

<p>PRATT A HUBBELL FIRM</p>		<p>DATE: 07/24/20</p>	<p>SCALE: NONE</p>
<p>BY: CA</p>	<p>CHK'D BY:</p>	<p>DIMENSION:</p>	<p>INCHES</p>
<p>WORKING PRESSURE</p>		<p>TEST PRESSURE</p>	<p>250 PSI.</p>
<p>HYDRO SHELL</p>		<p>500 PSI.</p>	
<p>HYDRO VALVE SEAT</p>		<p>250 PSI.</p>	
<p>DWG. NO. HP50688</p>			