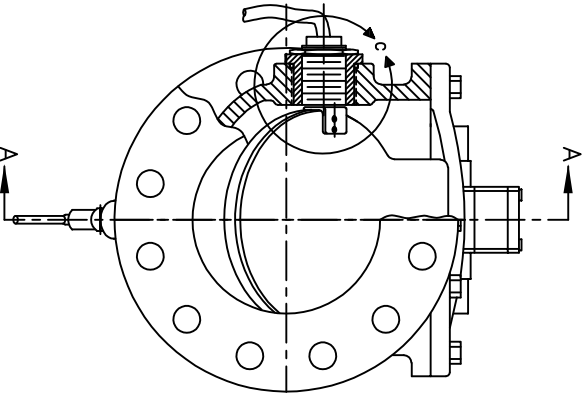
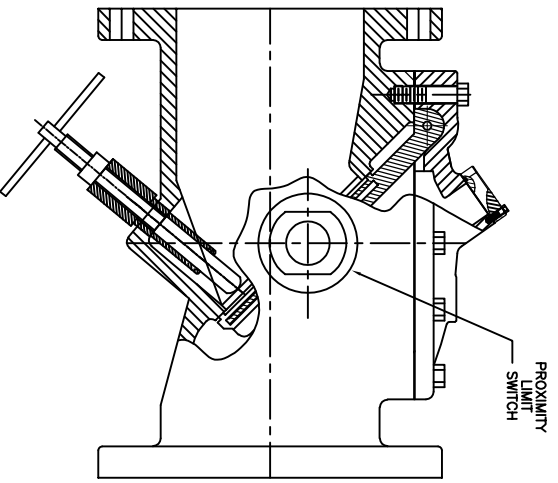
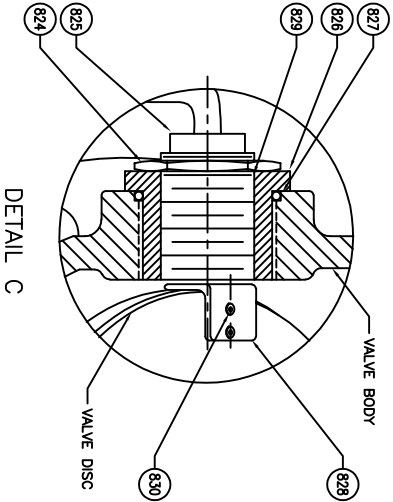
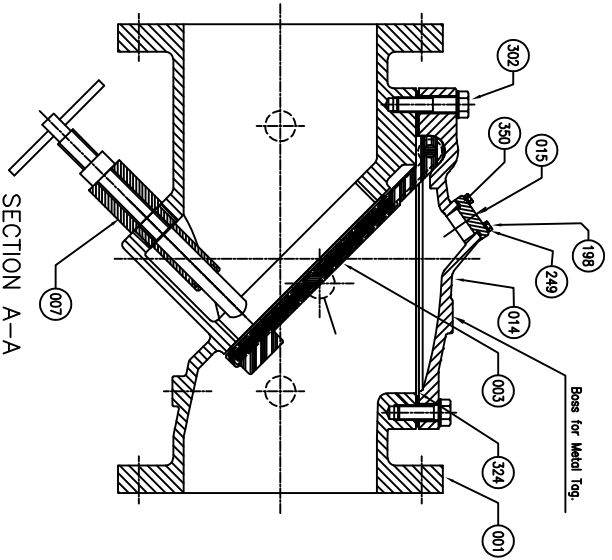


*SEE DRAWING HP50677, HP50678, & HP50679 FOR DETAIL DIMENSIONS AND CLEARANCE FOR REMOVAL

REMARK - SEVEN BOSSES



NOTES:
1 - FLANGES ARE PER ANSI B16.1 CLASS 125/150 FLAT FACED.

NO.	PARTS	MATERIAL	ASTM DESIGNATION	QTY
830	Hardware	Stainless Steel	Type 304	2
829	Plug	Nylon	-	1
828	Sensor Bracket	Steel/Zinc	Coated Steel	1
827	O-ring	Rubber (BUANA-N)	D 2000 BK 707 (Standard)	1
826	Adapter	Brass	B62	1
825	Proximity Switch			1
824	Lock Nut	Steel/Zinc	SAE Grade 5 - Zinc Plated	1
302	Cover Bolt	<input type="checkbox"/> Galvanized Steel <input type="checkbox"/> 316SS	A307 Grade B (Standard) ASTM A193 Grade 88M (Optional)	1 set
350	O-Ring A	<input type="checkbox"/> Hostalloy <input type="checkbox"/> Rubber (EPDM)	C276 (Optional for AIS) ASTM D2000 CA707 (Optional)	1
324	Cover Gasket	<input type="checkbox"/> Rubber (BUANA-N) <input type="checkbox"/> Rubber (EPDM) <input type="checkbox"/> Rubber (BUANA-N)	D 2000 BK 707 (Standard) ASTM D2000 CA807 (Optional) D 2000 BK 707 (Standard)	1
249	Washer	<input type="checkbox"/> Galvanized Steel <input type="checkbox"/> 316SS <input type="checkbox"/> Hostalloy	A307 Grade B (Standard) ASTM A193 Grade 88M (Optional) C276 (Optional for AIS)	1 set
198	End Plate Bolt	Galvanized Steel	A 307 Grade B	1 set
007	Backflush Device	Stainless Steel	A 276 Type 304	1
015	End Plate	Ductile Iron	A 536 Gr-65-45-12	1
014	Cover	Ductile Iron	A 536 Gr-65-45-12	1
003	Disc	Steel <input type="checkbox"/> Rubber (EPDM) <input type="checkbox"/> Rubber (BUANA-N)	A 36 ASTM D2000 CA707 (Optional) D 2000 BK 707 (Standard)	1
001	Body	Ductile Iron	A 536 Gr-65-45-12	1
MATERIAL LIST				
HYDRO SHELL			500 PSI.	
HYDRO VALVE SEAT			250 PSI.	
WORKING PRESSURE			250 PSI.	
TEST PRESSURE			250 PSI.	
PRATT				
BY:	CA	DATE:	09/01/20	SCALE:
CHK'D BY:	CA	DIMENSION:		INCHES
2"-24" FIG. 851 FLEX CHECK VALVE				
W/BACK FLUSH DEV & PROX. SWITCH				
250PSI, ANSI 125 FLANGES				
DWG. NO. HP50689				

ISSUE NUM.	DATE	REVISIONS	BY	TITLE
1				
2				
3				