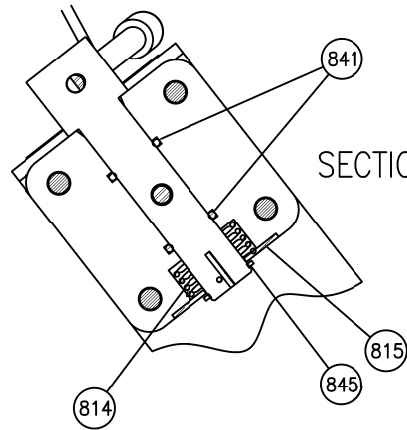
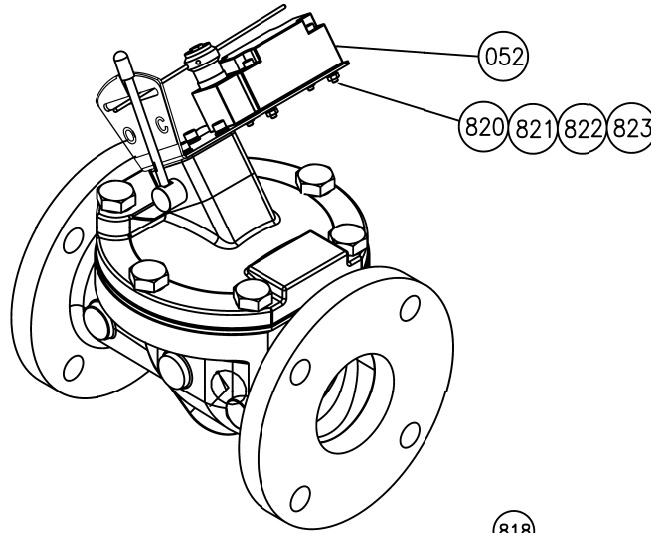


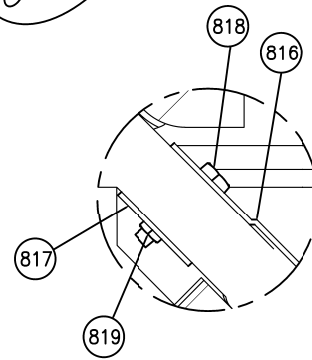
*SEE DRAWING HP50675, HP50676, & HP50681 FOR DETAIL DIMENSIONS & CLEARANCE FOR REMOVAL



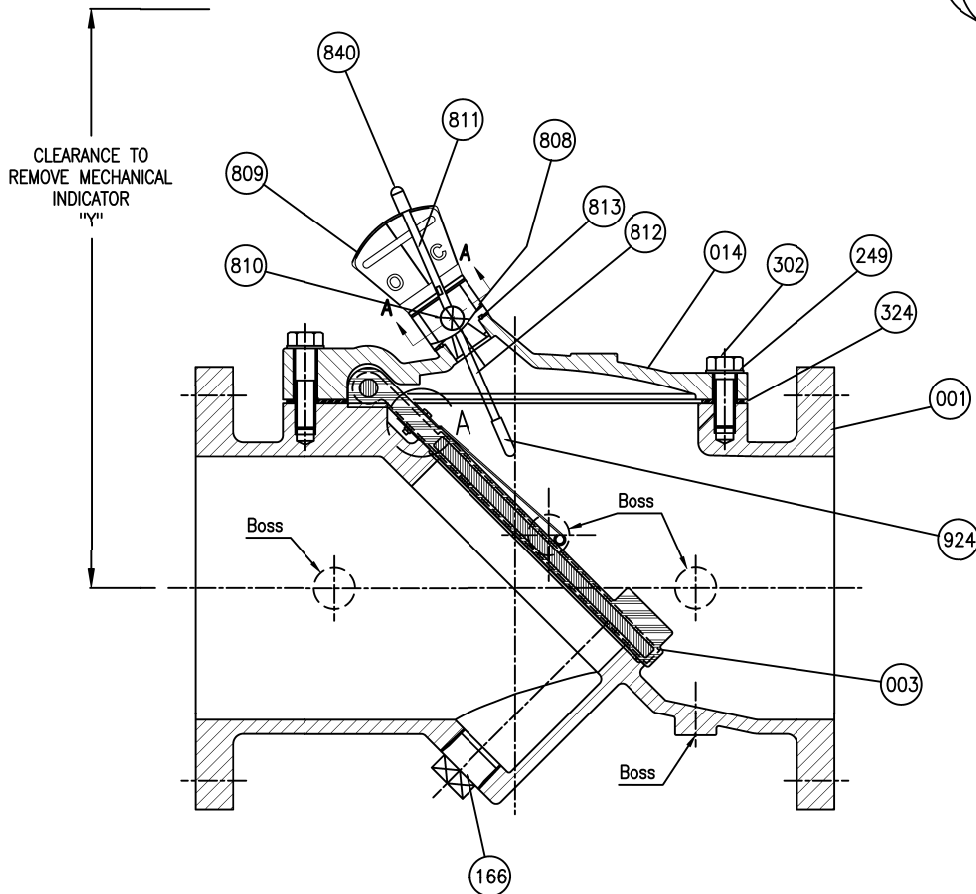
SECTION A-A



Remark - Seven Bosses



DETAIL VIEW A



NO.	PARTS	MATERIAL	ASTM.DESIGNATION.	Q' TY
052	Limit Switch	<input type="checkbox"/> Nema 4 SPDT <input type="checkbox"/> Nema 4 DPDT	<input type="checkbox"/> Exp Nema 7 SPDT <input type="checkbox"/> Exp Nema 7 DPDT	1
823	Shcs	Stainless Steel	Type 316	4
822	Hex Nut	Stainless Steel	Type 316	4
821	Lock Washer	Stainless Steel	Type 316	4
820	Flat Washer	Stainless Steel	Type 316	4
819	Surge Hex Nut	Stainless Steel	Type 316	AR
818	Surge Bolts	Stainless Steel	Type 316	AR
817	Surge Back Plate	Stainless Steel	Type 301	1
816	Surge Inhibitor	Stainless Steel	Type 301	1
815	Locking Plate	Stainless Steel	A 276 Type 304	1
841	Shaft O-ring	BUNA-N	D2000 BK 707	2
845	Snap Ring	Stainless Steel	A 276 Type 304	1
814	Torsion Spring	Spring Steel	-	1
813	Housing O-ring	BUNA-N	D2000 BK 707	1
924	Acorn Hex Nut	Stainless Steel	A 276 Type 304	1
812	Actuator Pin	Stainless Steel	A 276 Type 304	1
840	Indic. Pin Cap	EPDM	-	1
811	Indicator Pin	Stainless Steel	A 276 Type 304	1
810	Indicator Shaft	Stainless Steel	A 276 Type 304	1
809	Bracket	Stainless Steel	A 276 Type 304	1
808	Indicator House	Delrim	ASTM D792	1
302	Cover Bolt	<input type="checkbox"/> Galvanized Steel <input type="checkbox"/> 316SS <input type="checkbox"/> Hastelloy	A307 Grade B (Standard) ASTM A193 Grade B8M (Optional) C276 (Optional for AIS)	1set
324	Cover Gasket	<input type="checkbox"/> Rubber (EPDM) <input type="checkbox"/> Rubber (BUNA-N)	ASTM D2000 CA807 (Optional) D 2000 BK 707 (Standard)	1
249	Washer	<input type="checkbox"/> Galvanized Steel <input type="checkbox"/> 316SS <input type="checkbox"/> Hastelloy	A307 Grade B (Standard) ASTM A193 Grade B8M (Optional) C276 (Optional for AIS)	1set
166	Plug	Stainless Steel	A 276 Type 304	1
014	Cover	Ductile Iron Steel	A 536 Gr.65-45-12 A 36	1
003	Disc	<input type="checkbox"/> Rubber (EPDM) <input type="checkbox"/> Rubber (BUNA-N)	ASTM D2000 CA707 (Optional) D 2000 BK 707 (Standard)	1
001	Body	Ductile Iron	A 536 Gr.65-45-12	1

MATERIAL LIST			
HYDRO SHELL			500 PSI.
HYDRO VALVE SEAT			250 PSI.
TEST PRESSURE			
WORKING PRESSURE			250 PSI.

ISSUE NUM.	PRATT <small>a MUELLER brand</small>		BY: CA	DATE: 07/24/20	SCALE: NONE	
			CHK'D BY:	DIMENSION: INCHES		
	DATE	REVISIONS	BY	CHK	TITLE 2"-24" FLEX CHECK VALVE FIG.851 W/LIMIT SWITCH, (MECH.IND.)& SURGE PROTECTOR 250PSI,ANSI 125 FLANGES	
	1					
2						
3						
4				DWG. NO.	HP50690	