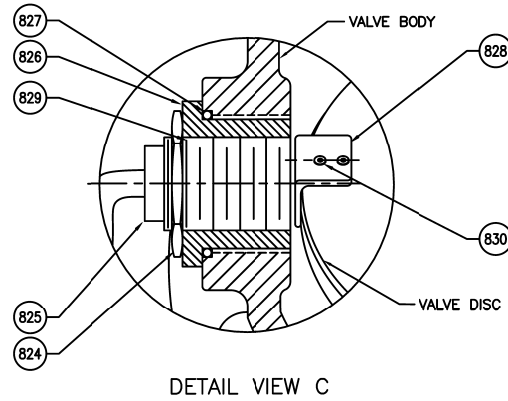
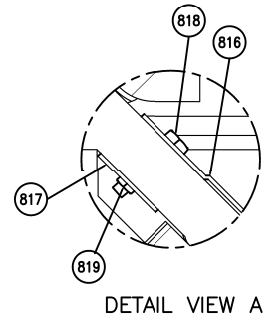
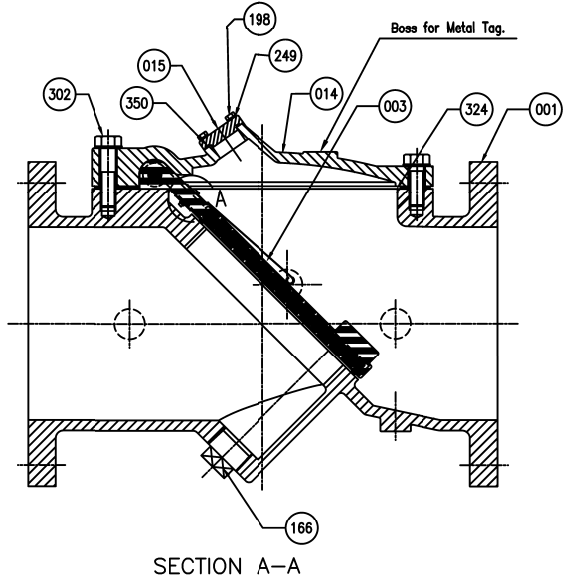


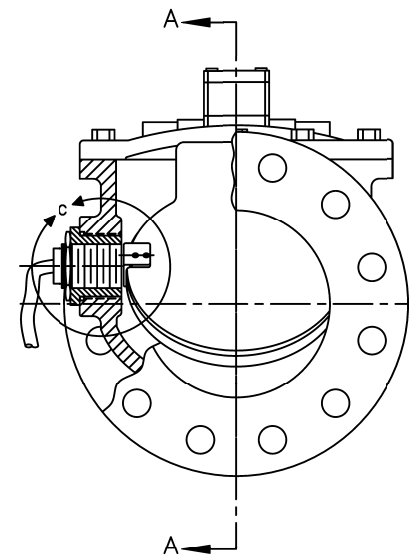
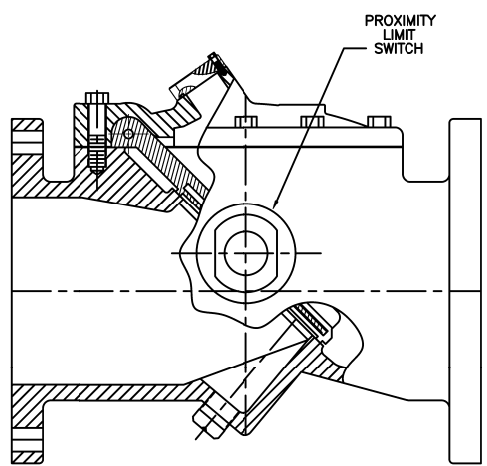
*SEE DRAWING HP50675 & HP50676 FOR DETAIL DIMENSIONS AND CLEARANCE FOR REMOVAL



CAST MARK:
 PRATT
 SIZE (INCH)
 DI A536
 250 PSI

PRATT
 POURING DATE

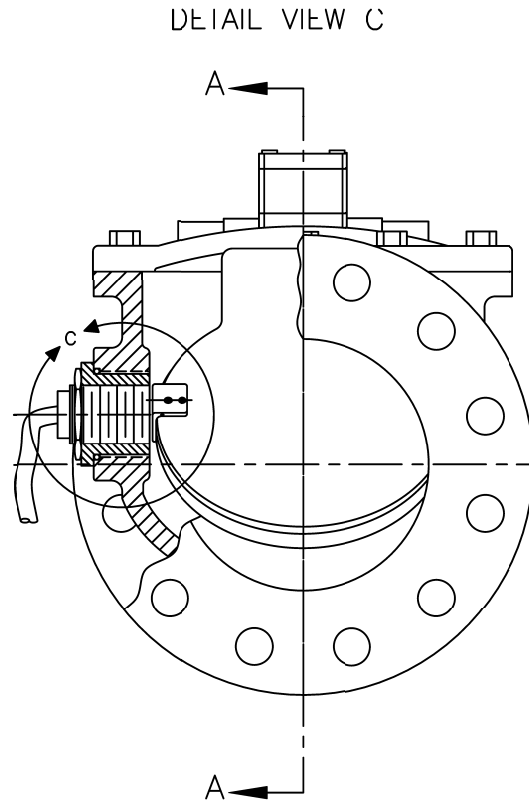
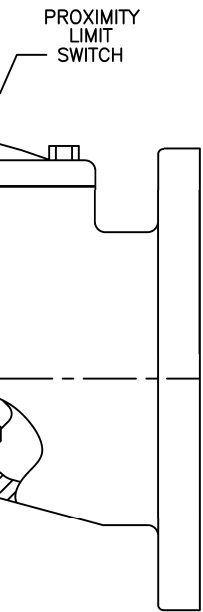
REMARK - SEVEN BOSSES



NO.	PARTS	MATERIAL	ASTM.DESIGNATION.	Q' TY
830	Hardware	Stainless Steel	Type 304	2
829	Plug	Nylon	-	1
828	Sensor Bracket	Steel/Zinc	Coated Steel	1
827	O-ring	Rubber (Buna-n)	D 2000 BK 707 (Standard)	1
826	Adapter	Brass	B62	1
825	Proximity Switch			1
824	Lock Nut	Steel/Zinc	SAE Grade 5 - Zinc Plated	1
819	Surge Hex Nut	Stainless Steel	Type 316	AR
818	Surge Bolts	Stainless Steel	Type 316	AR
817	Surge Back Plate	Stainless Steel	Type 301	1
816	Surge Inhibitor	Stainless Steel	Type 301	1
302	Cover Bolt	<input type="checkbox"/> Galvanized Steel	A307 Grade B (Standard)	1 set
		<input type="checkbox"/> 316SS	ASTM A193 Grade B8M (Optional)	
		<input type="checkbox"/> Hastelloy	C276 (Optional for AIS)	
350	O-Ring A	<input type="checkbox"/> Rubber (EPDM)	ASTM D2000 CA707 (Optional)	1
		<input type="checkbox"/> Rubber (BUNA-N)	D 2000 BK 707 (Standard)	1
324	Cover Gasket	<input type="checkbox"/> Rubber (EPDM)	ASTM D2000 CA807 (Optional)	1
		<input type="checkbox"/> Rubber (BUNA-N)	D 2000 BK 707 (Standard)	1
249	Washer	<input type="checkbox"/> Galvanized Steel	A307 Grade B (Standard)	1 set
		<input type="checkbox"/> 316SS	ASTM A193 Grade B8M (Optional)	
		<input type="checkbox"/> Hastelloy	C276 (Optional for AIS)	
198	End Plate Bolt	Galvanized Steel	A 307 Grade B	1 set
166	Plug	Stainless Steel	A 276 Type 304	1
015	End Plate	Ductile Iron	A 536 Gr.65-45-12	1
014	Cover	Ductile Iron	A 536 Gr.65-45-12	1
003	Disc	Steel	A 36	1
		<input type="checkbox"/> Rubber (EPDM)	ASTM D2000 CA707 (Optional)	
		<input type="checkbox"/> Rubber (BUNA-N)	D 2000 BK 707 (Standard)	
001	Body	Ductile Iron	A 536 Gr.65-45-12	1

MATERIAL LIST			
HYDRO SHELL		500	PSI.
HYDRO VALVE SEAT		250	PSI.
TEST PRESSURE			
WORKING PRESSURE		250	PSI.

ISSUE NUM.	PRATT		BY: CA	DATE: 09/01/20	SCALE: NONE
			CHK'D BY: CA	DIMENSION: INCHES	
	DATE	REVISIONS	BY	TITLE	
1			2"-24" FIG. 851 FLEX CHECK VALVE		
2			W/PROX. SWITCH & SURGE PROTECTOR		
3			250PSI, ANSI 125 FLANGES		
			DWG. NO.	HP50691	



249	Washer	<input type="checkbox"/> 316SS	ASIM A193 Grade B8M (Up
		<input type="checkbox"/> Hastelloy	C276 (Optional for AIS)
198	End Plate Bolt	Galvanized Steel	A 307 Grade B
166	Plug	Stainless Steel	A 276 Type 304
015	End Plate	Ductile Iron	A 536 Gr.65-45-12
014	Cover	Ductile Iron	A 536 Gr.65-45-12
003	Disc	Steel	A 36
		<input type="checkbox"/> Rubber (EPDM)	ASTM D2000 CA707 (Option
		<input type="checkbox"/> Rubber (BUNA-N)	D 2000 BK 707 (Standard)
001	Body	Ductile Iron	A 536 Gr.65-45-12
NO.	PARTS	MATERIAL	ASTM.DESIGNATION.

MATERIAL LIST			
HYDRO	SHELL		5
HYDRO	VALVE SEAT		2
TEST PRESSURE			
WORKING	PRESSURE		2

ISSUE NUM.	PRATT®			BY: CA	DATE: 09/01/20	SCALE:
			CHK'D BY: CA	DIMENSION:		
	DATE	REVISIONS	BY	TITLE		
1				2"-24" FIG. 851 FLEX CH		
2				W/PROX. SWITCH & SURGE		
3				250PSI, ANSI 125 FLA		
				DWG. NO.	HP50691	