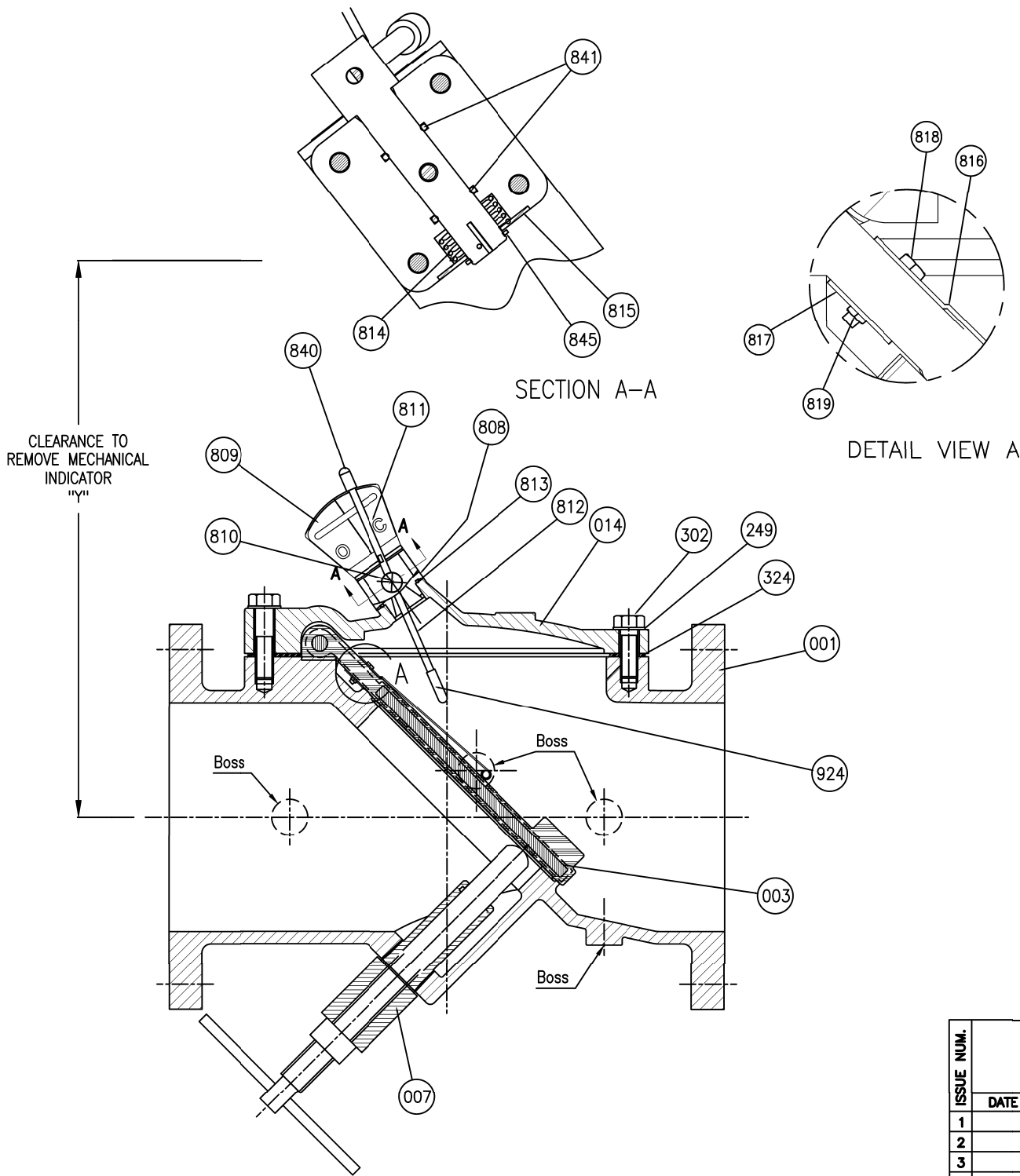


*SEE DRAWING HP50677, HP50678, HP50679 & HP50681 FOR DETAIL DIMENSIONS & CLEARANCE FOR REMOVAL



REMARK - SEVEN BOSSES

NO.	PARTS	MATERIAL	ASTM.DESIGNATION.	Q' TY
819	Surge Hex Nut	Stainless Steel	Type 316	AR
818	Surge Bolts	Stainless Steel	Type 316	AR
817	Surge Back Plate	Stainless Steel	Type 301	1
816	Surge Inhibitor	Stainless Steel	Type 301	1
815	Locking Plate	Stainless Steel	A 276 Type 304	1
841	Shaft O-ring	Buna-N	D2000 BK 707	2
845	Snap Ring	Stainless Steel	A 276 Type 304	1
814	Torsion Spring	Spring Steel	-	1
813	Housing O-ring	Buna-N	D2000 BK 707	1
924	Acorn Hex Nut	Stainless Steel	A 276 Type 304	1
812	Actuator Pin	Stainless Steel	A 276 Type 304	1
840	Indic. Pin Cap	EPDM	-	1
811	Indicator Pin	Stainless Steel	A 276 Type 304	1
810	Indicator Shaft	Stainless Steel	A 276 Type 304	1
809	Bracket	Stainless Steel	A 276 Type 304	1
808	Indicator House	Delrim ASTM D792	ASTM D792	1
302	Cover Bolt	<input type="checkbox"/> Galvanized Steel	A307 Grade B (Standard)	1set
		<input type="checkbox"/> 316SS	ASTM A193 Grade B8M (Optional)	
		<input type="checkbox"/> Hastelloy	C276 (Optional for AIS)	
324	Cover Gasket	<input type="checkbox"/> Rubber (EPDM)	ASTM D2000 CA807 (Optional)	1
		<input type="checkbox"/> Rubber (BUNA-N)	D 2000 BK 707 (Standard)	
249	Washer	<input type="checkbox"/> Galvanized Steel	A307 Grade B (Standard)	1set
		<input type="checkbox"/> 316SS	ASTM A193 Grade B8M (Optional)	
		<input type="checkbox"/> Hastelloy	C276 (Optional for AIS)	
007	Backflush Device	Stainless Steel	A 276 Type 304	1
014	Cover	Ductile Iron	A 536 Gr.65-45-12	1
		Steel	A 36	
003	Disc	<input type="checkbox"/> Rubber (EPDM)	ASTM D2000 CA707 (Optional)	1
		<input type="checkbox"/> Rubber (BUNA-N)	D 2000 BK 707 (Standard)	
001	Body	Ductile Iron	A 536 Gr.65-45-12	1

MATERIAL LIST			
HYDRO SHELL			500 PSI.
HYDRO VALVE SEAT			250 PSI.
TEST PRESSURE			
WORKING PRESSURE			250 PSI.

ISSUE NUM.	PRATT <small>a MUELLER brand</small>				BY: CA	DATE: 07/24/20	SCALE: NONE
					CHK'D BY:	DIMENSION: INCHES	
	DATE	REVISIONS	BY	CHK	TITLE		
	1				2"-24" FLEX CHECK VALVE FIG.851 W/BFD & MECH.IND.& PSPD 250PSI,ANSI 125 FLANGES		
2				DWG. NO. HP50692			
3							
4							