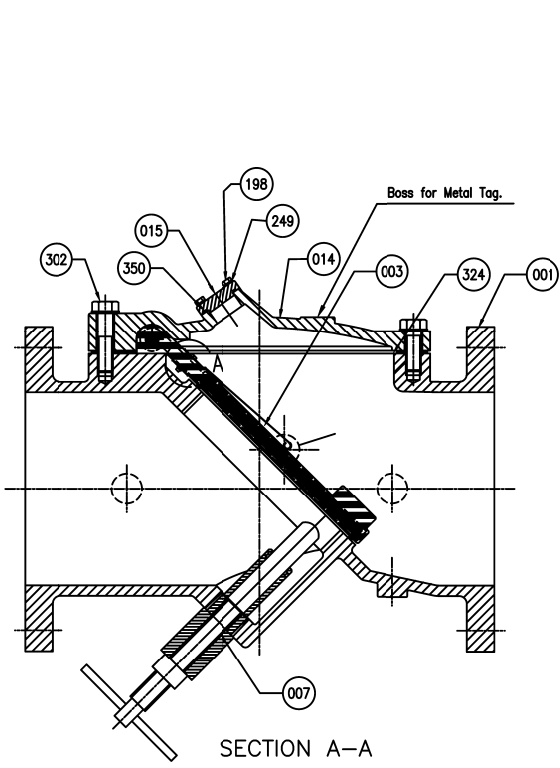
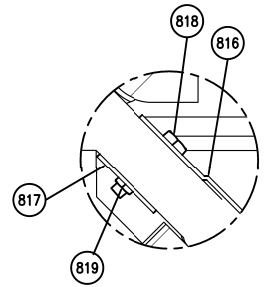
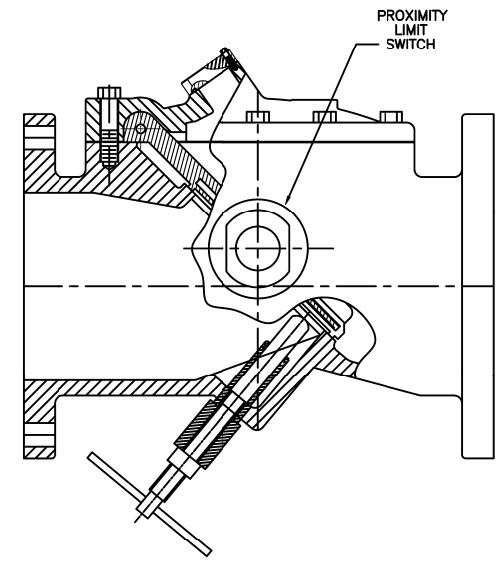


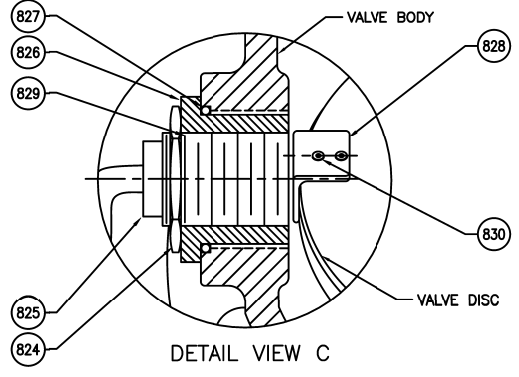
\*SEE DRAWING HP50677, HP50678, & HP50679 FOR DETAIL DIMENSIONS AND CLEARANCE FOR REMOVAL



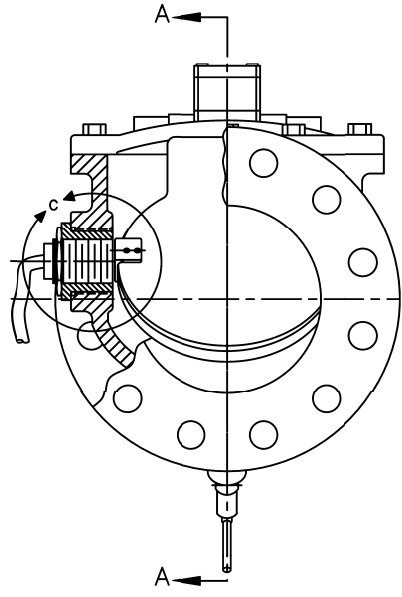
SECTION A-A



DETAIL VIEW A



DETAIL VIEW C



REMARK - SEVEN BOSSES

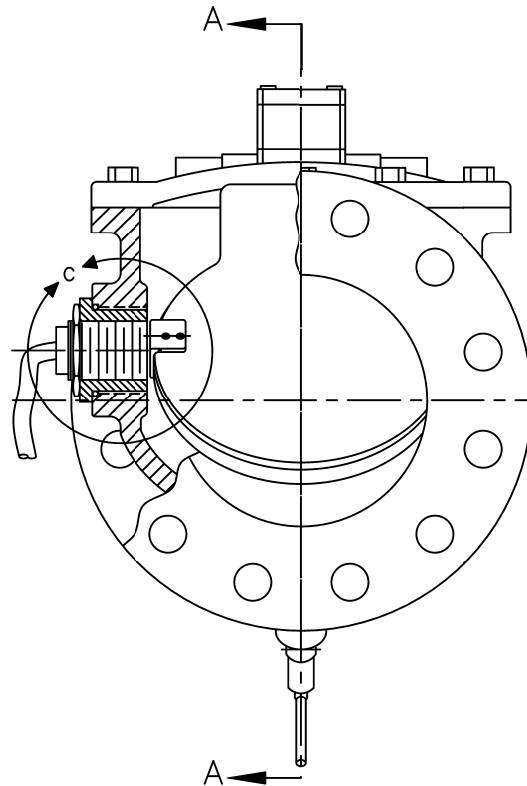
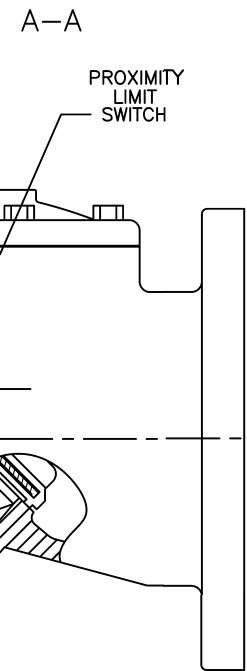
NO.	PARTS	MATERIAL	ASTM.DESIGNATION.	Q' TY
830	Hardware	Stainless Steel	Type 304	2
829	Plug	Nylon	-	1
828	Sensor Bracket	Steel/Zinc	Coated Steel	1
827	O-ring	Rubber (Buna-n)	D 2000 BK 707 (Standard)	1
826	Adapter	Brass	B62	1
825	Proximity Switch			1
824	Lock Nut	Steel/Zinc	SAE Grade 5 - Zinc Plated	1
819	Surge Hex Nut	Stainless Steel	Type 316	AR
818	Surge Bolts	Stainless Steel	Type 316	AR
817	Surge Back Plate	Stainless Steel	Type 301	1
816	Surge Inhibitor	Stainless Steel	Type 301	1
302	Cover Bolt	<input type="checkbox"/> Galvanized Steel	A307 Grade B (Standard)	1 set
		<input type="checkbox"/> 316SS	ASTM A193 Grade B8M (Optional)	
		<input type="checkbox"/> Hastelloy	C276 (Optional for AIS)	
350	O-Ring A	<input type="checkbox"/> Rubber (EPDM)	ASTM D2000 CA707 (Optional)	1
		<input type="checkbox"/> Rubber (BUNA-N)	D 2000 BK 707 (Standard)	1
324	Cover Gasket	<input type="checkbox"/> Rubber (EPDM)	ASTM D2000 CA807 (Optional)	1
		<input type="checkbox"/> Rubber (BUNA-N)	D 2000 BK 707 (Standard)	1
249	Washer	<input type="checkbox"/> Galvanized Steel	A307 Grade B (Standard)	1 set
		<input type="checkbox"/> 316SS	ASTM A193 Grade B8M (Optional)	
		<input type="checkbox"/> Hastelloy	C276 (Optional for AIS)	
198	End Plate Bolt	Galvanized Steel	A 307 Grade B	1 set
007	Backflush Device	Stainless Steel	A 276 Type 304	1
015	End Plate	Ductile Iron	A 536 Gr.65-45-12	1
014	Cover	Ductile Iron	A 536 Gr.65-45-12	1
003	Disc	Steel	A 36	1
		<input type="checkbox"/> Rubber (EPDM)	ASTM D2000 CA707 (Optional)	
		<input type="checkbox"/> Rubber (BUNA-N)	D 2000 BK 707 (Standard)	
001	Body	Ductile Iron	A 536 Gr.65-45-12	1

MATERIAL LIST

HYDRO SHELL	500	PSI.
HYDRO VALVE SEAT	250	PSI.
TEST PRESSURE		
WORKING PRESSURE	250	PSI.

ISSUE NUM.	DATE	REVISIONS	BY	TITLE
1				
2				
3				

BY:	CA	DATE:	09/01/20	SCALE:	NONE
CHK'D BY:	CA	DIMENSION:	INCHES		
<b>PRATT</b> 2"-24" FIG. 851 FLEX CHECK VALVE W/BFD, PROX. SWITCH & PSPD 250PSI, ANSI 125 FLANGES					
DWG. NO.				HP50694	



249	Washer	<input type="checkbox"/> 316SS	ASIM A193 Grade B8M (Up
		<input type="checkbox"/> Hastelloy	C276 (Optional for AIS)
198	End Plate Bolt	Galvanized Steel	A 307 Grade B
007	Backflush Device	Stainless Steel	A 276 Type 304
015	End Plate	Ductile Iron	A 536 Gr.65-45-12
014	Cover	Ductile Iron	A 536 Gr.65-45-12
003	Disc	Steel	A 36
		<input type="checkbox"/> Rubber (EPDM)	ASTM D2000 CA707 (Option
		<input type="checkbox"/> Rubber (BUNA-N)	D 2000 BK 707 (Standard)
001	Body	Ductile Iron	A 536 Gr.65-45-12
NO.	PARTS	MATERIAL	ASTM.DESIGNATION.

MATERIAL LIST			
HYDRO SHELL			5
HYDRO VALVE SEAT			2
TEST PRESSURE			
WORKING PRESSURE			2

ISSUE NUM.	<b>PRATT®</b>			BY: CA	DATE: 09/01/20	SCALE:
				CHK'D BY: CA	DIMENSION:	
	DATE	REVISIONS	BY	TITLE		
1				2"-24" FIG. 851 FLEX CH W/BFD, PROX. SWITCH 250PSI, ANSI 125 FLA		
2						
3						
				DWG. NO.	HP50694	