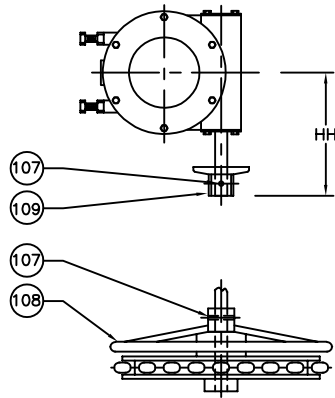


2" NUT ON BURIED SERVICE OPTION



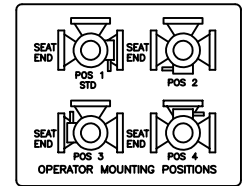
CHAINWHEEL OPTION

VALVE SIZE	90° GEAR SIZE	A	B	C	D	E	F	G	H	J	P	Q	R	S	T
3	M3	3	8	0.75	4.96	4.81	7.50	6.00	4	0.75	5.50	-	-	4	-
4	M8	4	9.88	1.00	6.94	5.94	9.00	7.50	6	0.75	6.50	2	0.63	8	-
6	M8	6	11.63	1.00	8.06	7.06	11.00	9.50	6	0.88	8	2	0.75	8	-
8	M8	8	13.88	1.13	11.75	10.94	13.50	11.75	4	0.88	9	4	0.75	8	-
10	M8	10	16.75	1.19	11.75	10.94	16.00	14.25	12	1	11	-	-	12	-
12	M8	12	19.00	1.25	13.50	12.88	19.00	17.00	12	1	11.56	-	-	8	4
14	M8	14	21.00	1.38	14.38	14.19	21.00	18.75	10	1.13	12.50	2	1.00	8	4
16	M8	16	23.75	1.44	15.06	14.75	23.50	21.25	16	1.13	15.13	-	-	16	-

THREE-WAY VALVE PORT POSITION STYLES

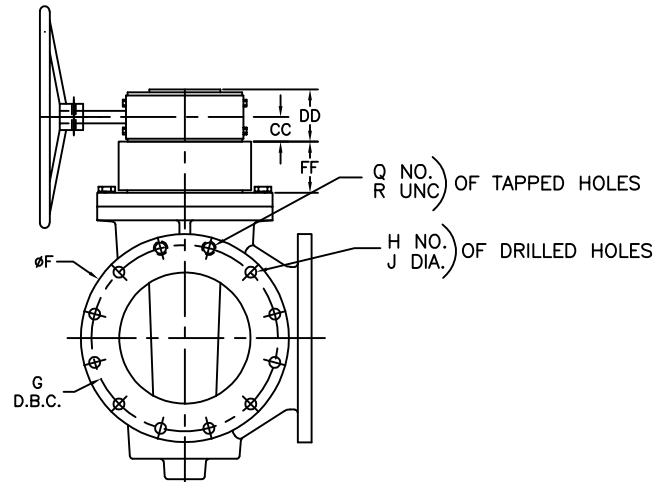
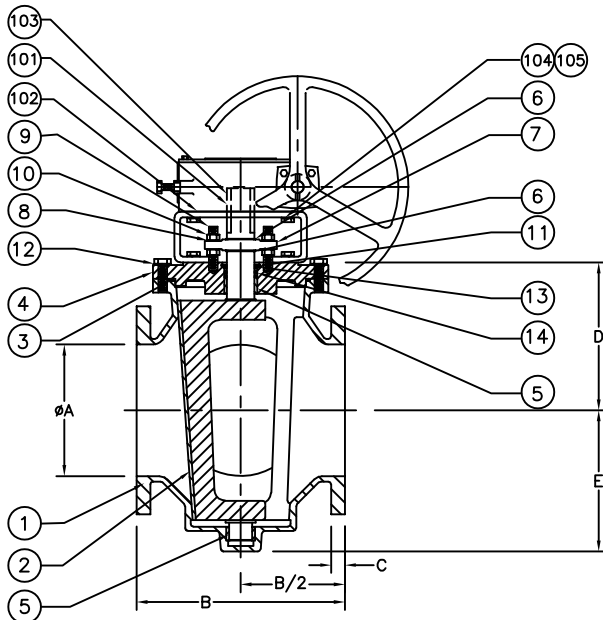
90° A90  C  D  E  F

PLEASE SEE MILLIKEN MULTIPORT PLUG VALVE CATALOGUE PAGE 5 FOR VALVE PATTERNS OF THE THREE-WAY VALVE PORT POSITIONS



\*ONLY ON 3" VALVE IS BRACKET AND COUPLER USED. ALL THE OTHERS USE ONLY A BRACKET

90° GEAR OPTION								
GEAR SIZE	AA	BB	CC	DD	EE	FF	GG	HH
M3	7.00	2.56	1.50	3.56	6.00	6.00	9.50	8.00
M8	11.25	4.63	2.00	4.53	12.00	4.00	11.63	10.00



FLANGE 1 & 3  
(OPPOSITE SIDES)

109	1	2" NUT	DUCTILE IRON
108	1	CHAINWHEEL	DUCTILE IRON
107	1	SPRING PIN	STEEL
106	1	HANDWHEEL	DUCTILE IRON
105	AR	LOCK WASHER	STEEL/ZINC
104	AR	CAP SCREW	STEEL/ZINC
*103	1	COUPLING	STEEL
102	1	BRACKET	STEEL
101	1	KEY	STEEL
50	1	GEAR	-
14	2	U CUP SEAL	ELASTOMER AS SPEC.
13	1	SEAL RET. RING	BRASS
12	AR	CAP SCREW	STEEL STN. STEEL
11	1	RETAINING RING	STEEL
10	4	JAM NUT	STEEL STN. STEEL
9	2	STUD	STEEL STN. STEEL
8	4	FLATWASHER	STEEL STN. STEEL
7	1	GLAND	DUCTILE IRON
6	2	SNAP RING	SPRING STEEL
5	2	BEARING	STAINLESS STEEL
4	1	CAP	CAST IRON
3	1	'O' RING	ELASTOMER AS SPEC.
2	1	PLUG	DUCTILE IRON
1	1	BODY	CAST IRON
ITEM	QTY	DESCRIPTION	MATERIAL

ISSUE NUM.	DATE	REVISIONS	BY	CHK'D	SCALE
1					NONE
2	05/92	WAS DWG #49161	CE	CE	
3	06/94	CHANGED DIM. 'U' FOR 3" VALVE FROM 9-1/8" TO 11-1/8"	CR	CR	
4	07/97	REDRAWN ON CADD	CR	CR	
5	10/13	ADDED 14" TO NOTES	AA	AA	
6	08/17	ADDED 90° GEAR DIM TABLE	AA	AA	
7	05/18	UPDATED DRAWING	AM	JL	

PRATT

DATE: 7/97

TITLE: 3"-16" THREE-WAY PLUG VALVE W/ 90° GEAR OPERATOR & HANDWHEEL (2" NUT OR CHAINWHEEL OPTION)

DWG. NO. HP60018