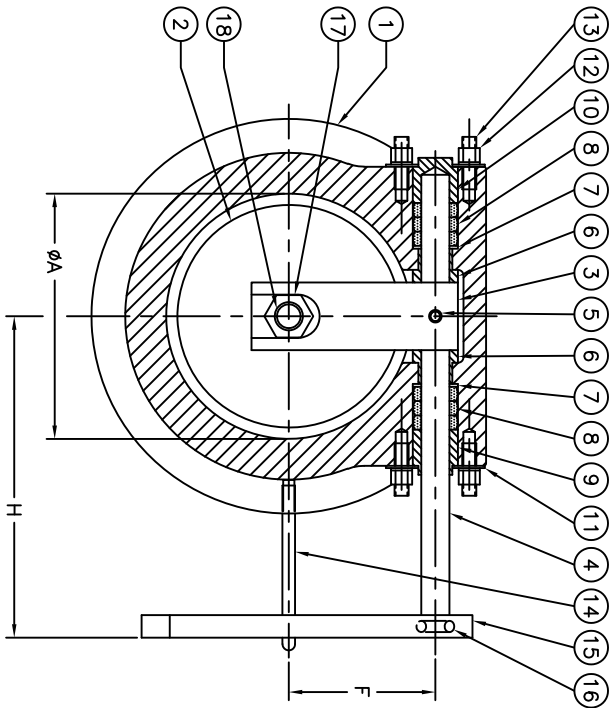


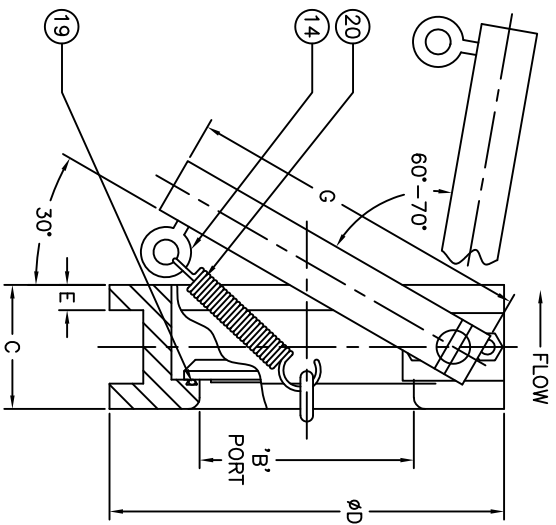
REFERENCE ONLY

SIZE	A	B	C	D	E	F	G	H	WT. LB.
3	2.63	2.06	3.75	5.25	0.50	2.13	3.75	5.00	18
4	3.63	3.03	2.25	6.88	0.44	2.13	7.00	6.00	13
6	5.44	4.75	2.75	8.75	0.56	3.25	7.25	7.13	27
8	7.25	6.44	2.88	11.00	0.63	4.00	8.75	8.06	42



RIGHT HAND SHOWN

NOTE:
1. SPECIFY RIGHT HAND OR LEFT HAND WHEN ORDERING.



THIS DRAWING IS THE PROPERTY OF HENRY PRATT COMPANY AND MUST NOT BE USED IN ANY WAY PREJUDICIAL TO THEIR INTERESTS

ISSUE NO.	DATE	REVISIONS	BY	TITLE:
1	07/99	ORIGINAL DRAWING	GE	3" TO 8" WAFER CHECK VALVE, WITH BUVA N SEAT
2	01/99	REWORK ON AUTOCAD	CR	
3	04/10	REVISION FROM ON DWG CHECK #2983	RS	
4	01/14	REMOVED TO 12" & 12"	AA	

ITEM	QTY.	DESCRIPTION	MATERIAL
20	1	SPRING	STEEL ASTM A228
19	1	O-RING SEAT	AS SPECIFIED
18	1	THREADED ROD	316 S.S.
17	1	NUT	316 S.S.
16	1	SPRING PIN	STEEL
15	1	SPRING ARM	STEEL ASTM A36
14	2	EYEBOLT	STEEL NP
13	4	THREADED ROD	STEEL NP
12	4	NUT	STEEL NP
11	2	PLATE	STEEL ASTM A36
10	1	BLIND GLAND	BRONZE SAE 660
9	1	PACKING GLAND	BRONZE SAE 660
8	AR	PACKING	P.T.F.E.
7	2	WASHER	BRONZE SAE 660
6	2	BUSHING	BRONZE SAE 660
5	1	S.H. CAP SCREW	316 S.S.
4	1	SHAFT	316 S.S.
3	1	DISC ARM	ASTM A-743 CF8M
2	1	DISC	ASTM A-743 CF8M
1	1	BODY	A126 CL.B IRON

BY	DATE	SCALE
CR	01/99	NONE

CHKD	DIMENSIONS
	INCHES

DWG. NO.
HP50019