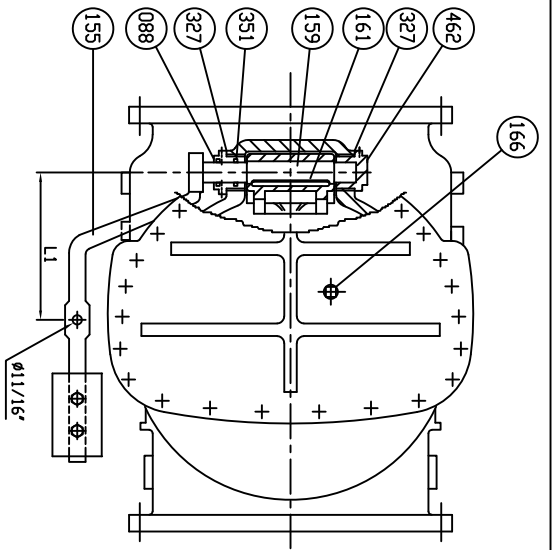


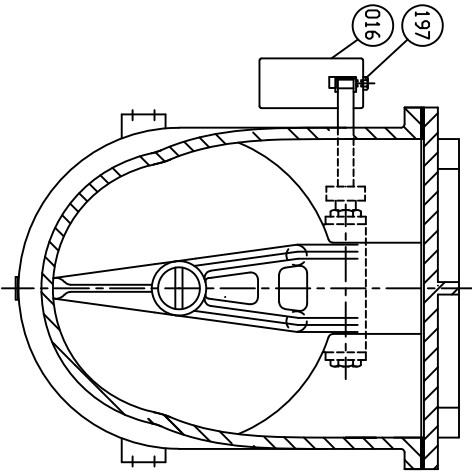
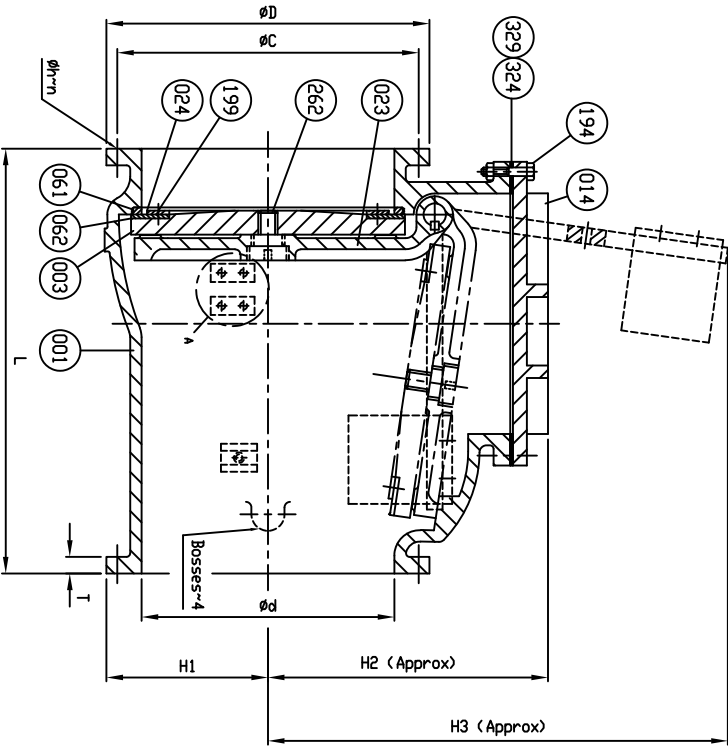
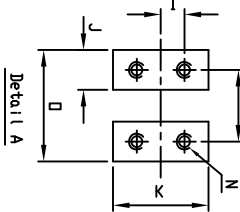
REVISION 1, CHANGED ITEM 166 MTRL. TYPE FROM MALLEABLE IRON A47 TO, U.C. 03/08/11, ECR# 456

REVISION 2, ADDED COVER O-RING TO MATERIAL TABLE AND REMOVED PAINT NOTE, AA, 11/28/17



Marking
 SIZE (INCH)
 CONE
 150 PSI
 AWMA C508
 CI

200-
 CI
 SERIES 8000



SIZE ØD	L	ANSI B16.1 CL. 125					I	J	K	M	N	Ø
		ØD	ØC	Øh	T	T						
30	52 1/2	38 3/4	36	1 3/8	28	2 1/8	7 1/2	5 1/2	5/8 x 11 (UNC)	8 1/4		
36	60 1/2	46	42 3/4	1 5/8	32	2 3/8	7 1/2	5 1/2	5/8 x 11 (UNC)	8 1/4		

Part No.	Description	Material	ASTM Destination	Qty
462	Retaining Plug	Brass	B 21	1
351	D-Ring	Rubber (Buna N)	D 2000 BK 707	2
329	Cover D-Ring	Rubber (Buna N)	D 2000 BK 807	1
327	Gasket	Rubber (Buna N)	D 2000 BK 807	2
324	Cover Gasket	Rubber (Buna N)	D 2000 BK 807	1
262	Disc Bolt	Stainless Steel	A 276 Type 304	1
199	Seat Holder Bolt	Stainless Steel	A 276 Type 304	1 set
197	Weight Bolt	Zinc Coated Steel	A 307 Grade B	2
194	Cover Bolt & Nut	Zinc Coated Steel	A 307 Grade B	1 set
166	Plug Ø1/2"	Stainless Steel	A 276 Type 304	1
161	Key	Stainless Steel	A 276 Type 304	1
159	Hinge Pin	Stainless Steel	A 276 Type 304	1
155	Weight Arm	Ductile Iron	A 536 Gr. 65-45-12	1
088	Seat Nut	Brass	B 21	1
062	Disc Seat Ring	Rubber (Buna N)	D 2000 BK 807	1
061	Body Seat Ring	Bronze	B 62	1
024	Seat Holder	Ductile Iron	A 536 Gr. 65-45-12	1
016	Weight	Cast Iron	A 126 Class B	1
023	Arm	Ductile Iron	A 536 Gr. 65-45-12	1
014	Cover	Cast Iron	A 126 Class B	1
003	Disc	Cast Iron	A 126 Class B	1
001	Body	Cast Iron	A 126 Class B	1

MATERIAL LIST	
HYDRD SHELL	300 PSI.
HYDRD VALVE SEAT	150 PSI.
HYDRD BACK SEAT	— PSI.
AIR SEAT	— PSI.
STEAM	— PSI.
MARKING PRESSURE	TEST PRESSURE
	150 PSI.

SCALE	DATE	REV.
N.T.S.	10/20/10	001
DR. JON COLPAN	CHK. JPP	ECN. USA1326C

TITLE	SIZE 30" AND 36" SWING CHECK VALVE AWMA C508 BRONZE BODY SEAT RING & BUNA N DISC SEAT RING WITH ONE LEVER AND WEIGHT
TYPE	8001AB1LW
DWG NO.	HP80013
REV.	3

PRATT