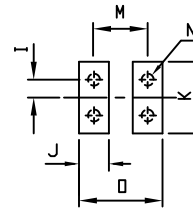


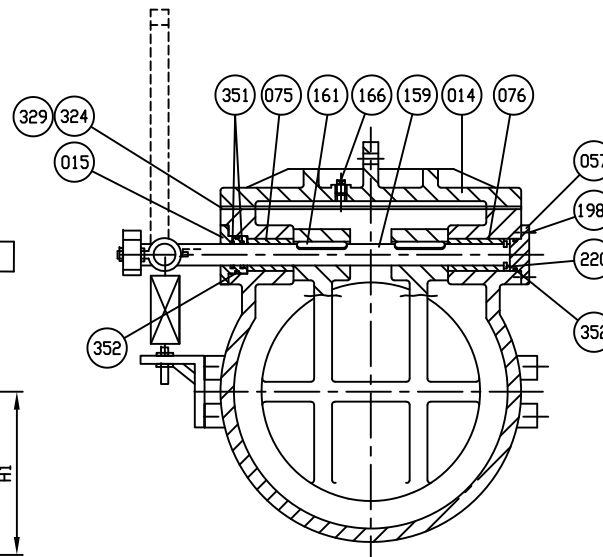
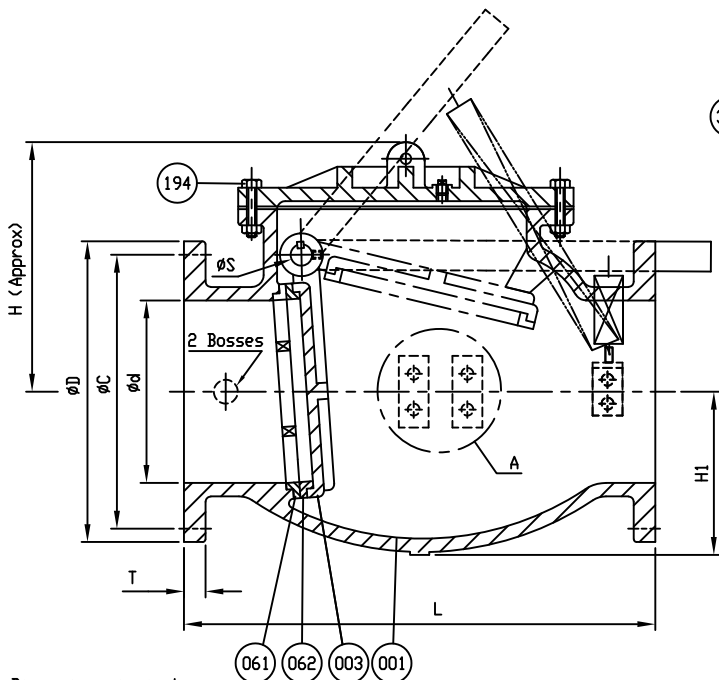
Marking

SIZE (INCH) ⊕
 CCNE SCI.
 150 CWP YEAR
 AWWA C508 POURING DATE
 SERIES 8000



Detail A

LIMIT SWITCH		✓
MODEL	DESCRIPTION	
LN4D	NEMA 4 SPDT	
LN6D	NEMA 6/7 SPDT	
LN4DPDT	NEMA 4 DPDT	
LN6DPDT	NEMA 6/7 DPDT	



- Dimensions in inches

SIZE Ød in. mm.	L	ANSI B16.1 CL. 125					ØS	ØB	H	H1	I	J	K	M	N	□
		ØD	ØC	Øh	n	T										
14 (350)	31	21	18 3/4	1 1/8	12	1 3/8	1 3/4	22 3/16	19 5/16	12 1/16	1	2 1/8	4 1/2	4	3/4 x 10 v (UNC)	6
16 (400)	36	23 1/2	21 1/4	1 1/8	16	1 7/16	2	24 1/8	21 1/2	13 1/4	1	2 1/8	4 1/2	4	3/4 x 10 v (UNC)	6

501	Limit Switch Mounting Bracket	Zinc Coated Steel	1	
500	Limit Switch		1	
463	Spring Kit	Steel/Stainless Steel	1 set	
352	O-Ring C	Rubber (Buna N)	D 2000 BK 707 2	
351	O-Ring B	Rubber (Buna N)	D 2000 BK 707 2	
329	Cover O-Ring	Rubber (Buna N)	D 2000 BK 807 1	
324	Cover Gasket	Rubber (Buna N)	D 2000 BK 807 1	
220	Snap Ring	Stainless Steel	A 276 Type 420 1	
198	End Plate Bolt	Zinc Coated Steel	A 307 Grade B 1 set	
194	Cover Bolt & Nut	Zinc Coated Steel	A 307 Grade B 1 set	
166	Plug Ø1"	Stainless Steel	A 276 Type 304 1	
161	Key	Stainless Steel	A 276 Type 304 2	
159	Hinge Pin	Stainless Steel	A 276 Type 304 1	
155	Weight Arm	Ductile Iron	A 536 Gr. 65-45-12 1	
076	Bushing (B)	Bronze	B 62 1	
075	Bushing (A)	Bronze	B 62 1	
062	Disc Seat Ring	Bronze	B 62 1	
061	Body Seat Ring	Bronze	B 62 1	
057	End Plate (B)	Ductile Iron	A 536 Gr. 65-45-12 1	
015	End Plate (A)	Bronze	B 62 1	
014	Cover	Cast Iron	A 126 Class B 1	
003	Disc	Ductile Iron	A 536 Gr. 65-45-12 1	
001	Body	Cast Iron	A 126 Class B 1	
NO.	PARTS	MATERIAL	ASTM. DESIGNATION.	Q'TY

MATERIAL LIST

HYDRO SHELL	300	PSI.
HYDRO VALVE SEAT	150	PSI.
HYDRO BACK SEAT	—	PSI.
AIR SEAT	—	PSI.
STEAM	—	PSI.

TEST PRESSURE

WORKING PRESSURE	150	PSI.
------------------	-----	------

PRATT®

SCALE	DR. R. RACKAWACK	DATE 10/20/10	REF. DWG.
N.T.S.	CHK.	APP.	E.C.N. USA1394C

TITLE
 SIZE 14" & 16" SWING CHECK VALVE AWWA C508
 BRONZE BODY SEAT RING & BRONZE DISC SEAT RING
 WITH ONE LEVER AND SPRING AND LIMITSWITCH

TYPE: 8001ABBL	DWG NO. HP80015	REV. 5
SEE TABLE FOR LIMIT SWITCH		

REVISION 1, CHANGED ITEM 166 MTRL. TYPE FROM MALLEABLE IRON A47 TO, UJC, 03/08/11, ECR# 456

REVISION 3, ADDED TABLE FOR LIMIT SWITCH, AA, 09/19/11, ECR# 556

REVISION 2, ADDED ITEM 220 SNAP RING MATERIAL TYPE, UJC, 04/04/11, ECR# 491

REVISION 4, ADDED COVER O-RING TO MATERIAL TABLE AND REMOVED PAINT NOTE, AA, 11/28/17