

PRATT®

a MUELLER brand

1/2" - 2" BALLCENTRIC® PLUG VALVE

Engineering Creative Solutions for Fluid Systems Since 1901



MUELLER

PRATT®

a **MUELLER** brand

The Pratt® criteria of quality, reliability, safety and value are embodied in the Ballcentric® Plug Valve setting higher standards for dependable performance with excellent features achieved by the utilization of the very latest design and manufacturing techniques.

- Computer Aided Design
- High Integrity Casting
- CNC manufacturing delivers consistent sizes on all components

All complemented by a rigorous Quality Control System

SCOPE OF LINE

BODY

The Ballcentric Plug Valve body casting is ASTM A536 65-45-12 ductile iron using high pressure molding techniques. Threaded connection available on 1/2"-2" sizes. Flanged connection available on 2" size. Flange diameter, thickness and drilling conform to ANSI B16.1 Class 125.

SEAT

The valve seat shall be furnished with an overlay of corrosion and abrasion resistant epoxy.

STEM SEAL

High integrity sealing by combining the advantages of a resilient and abrasion resistant U-Cup seal. From vacuum to high pressure, the self-adjusting sealing system (per AWWA C504) gives positive, trouble-free service and is retained independently of the plug stem or external torque device, thereby eliminating periodic maintenance.

BEARINGS

The plug rotates in permanently lubricated sintered 303 stainless steel bearings, located in the body and bonnet, along with upper and lower PTFE thrust washers which ensure consistently low operating torque.

PLUG

Supported on integral trunnions, the plug is totally encapsulated with an elastomer that is molded to the casting providing tight shut off even under vacuum conditions. High integrity corrosion-free sealing is achieved by a variety of abrasion resistant elastomers which protect the plug right up to the trunnions. When assembled, the light compression of the elastomers onto PTFE thrust washers prevents entry of abrasive materials into the bearings.

BONNET SEAL

Superior "O" ring sealing with metal / metal contact means lower bolting stresses compared with compression gaskets.

FLOW

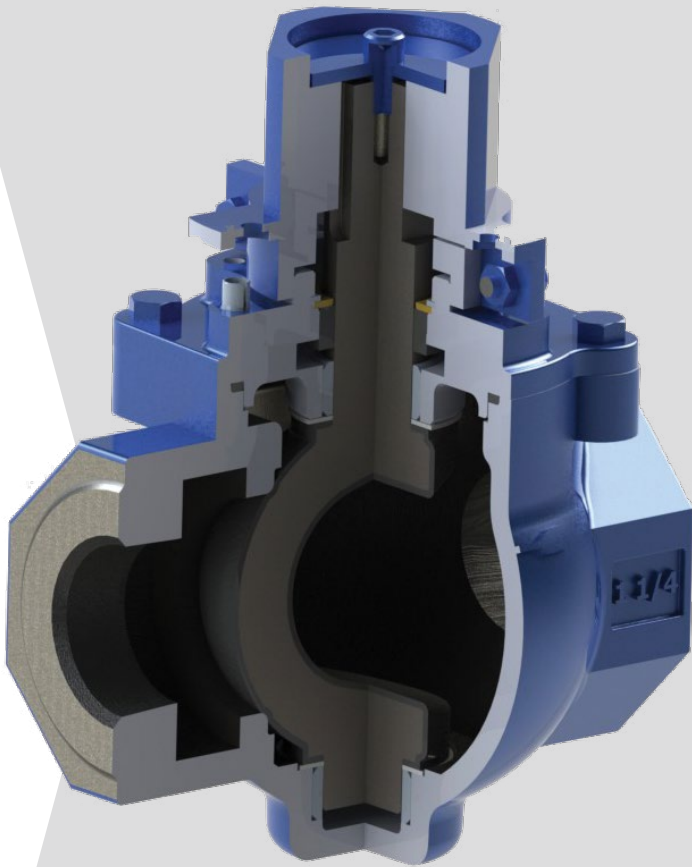
The full round port design with streamlined internal contours gives the highest industry capacity straight through flow in the full open position, reducing turbulence and pressure drop and the effect of erosive media. Handling of sludges and slurries is therefore enhanced.

TRAVEL STOPS

Adjustable open and closed travel stops are fitted as standard on both wrench and gear operated Ballcentric Plug Valves.

1/2" - 2" BALLCENTRIC® PLUG VALVES

Features and Benefits



INSTALLATION

The Ballcentric Plug Valve is suitable for flow and shut-off in either direction. Seat end downstream is the preferred orientation and any reverse flow requirement should be stated at the time of order. For use on fluids with suspended solids, installation with the seat upstream and the valve stem horizontal is recommended with plug rotation to the top of the valve.

IN-LINE MAINTENANCE

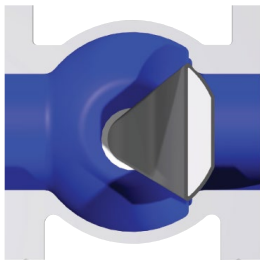
In the unlikely event of stem leakage, the stem seals can be easily replaced without removing the bonnet. Access to the body for cleaning or inspection does not require removal from the line.

MODULAR CONSTRUCTION

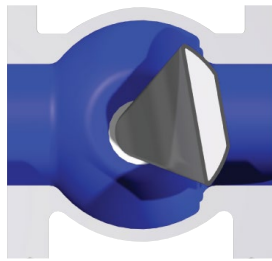
Design of the bonnet and stem allows for on-site adaption of gear operators, power actuators, or extension devices on to standard valves. Conversion can be easily undertaken without removing the valve bonnet, thereby minimizing downtime.

POWER OPERATION

Pneumatic, electric or hydraulic operation is available, complete with accessories such as limit switches, solenoid valves and positioners when required.



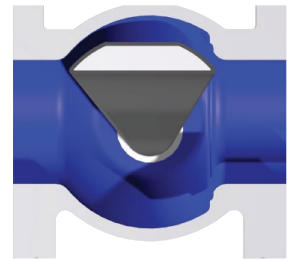
- Valve in closed position for bubble tight shut-off
- Normal flow direction gives pressure assisted sealing
- Torques are low even in reverse flow



- Plug rotates away from the seat for instant opening
- Seat wear and operating torque reduced
- No further seat contact until valve is closed again

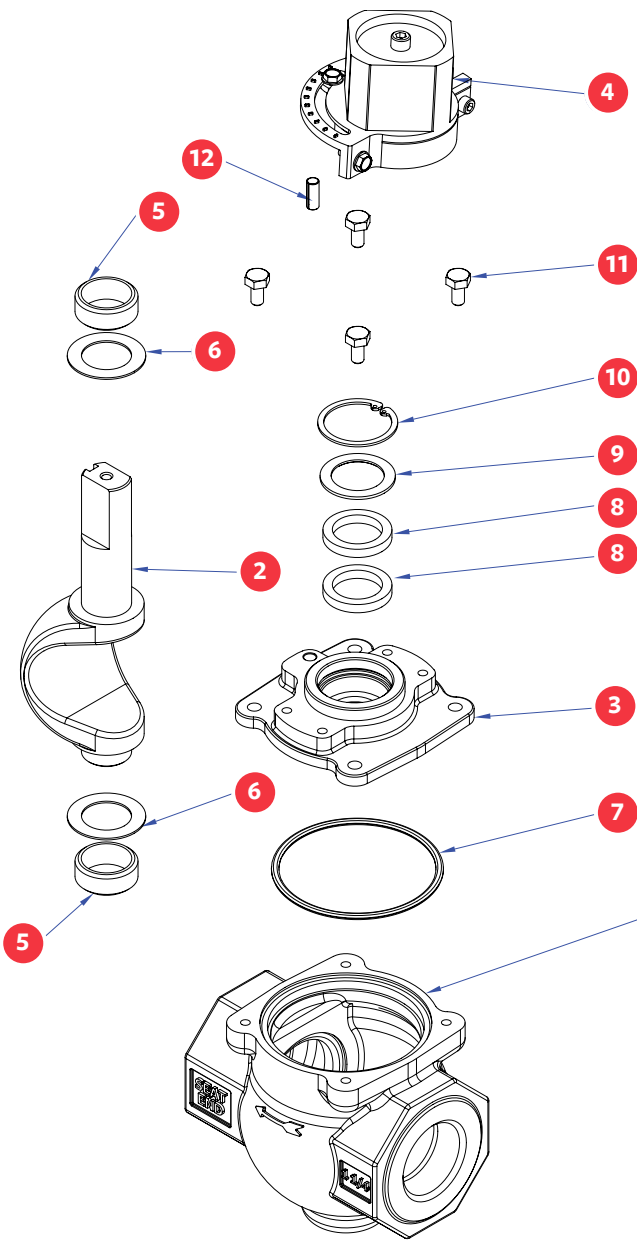


- Design of Ballcentric plug valve allows modulating control over the full 90° travel
- Ideally suited for balancing service
- Standard rotary valve provides control and tight shut off in one valve

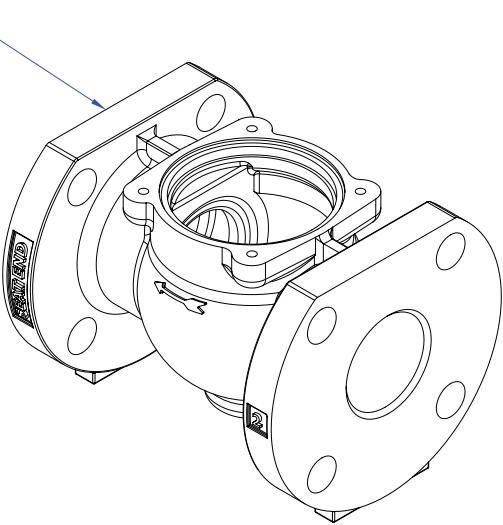


- Plug is out of flow path when fully open
- Straight through, uninterrupted smooth flow
- Round port reduces turbulence and erosion, lowers pumping costs and can be "pigged" to clean the pipeline

Standard Materials of Construction - Fig. 613A / 611A, 1/2" - 2"



ITEM	COMPONENT	MATERIAL	QTY.
1	Body	Ductile Iron ASTM A536	1
2	Plug	Rubber Coated Ductile Iron ASTM A536	1
3	Cap	Ductile Iron ASTM A536	1
4	Torque Collar Assembly	Ductile Iron ASTM A536	1
5	Journal Bearing	303 Stainless Steel	2
6	PTFE Washer (Grit Seal)	PTFE	2
7	O Ring	Elas. as Spec.	1
8	U Cup Seal	Elas. as Spec.	2
9	Seal Retaining Ring	Brass — ASTM B-138-675	1
10	Internal Snap Ring	Spring Steel	1
11	Cap Bolt	Steel (Zinc Plated)	AR
12	Close Stop	Steel (Zinc Plated)	1



ORDERING INFORMATION

VALVE TYPES	DESIGNATION
Threaded NPT Ductile Iron	613A
ANSI 125 Flanged Ductile Iron (2" only)	611A
Threaded NPT 316 SS	603AS
ANSI 125 Flanged 316 SS (2" only)	601S

SEAT	
Epoxy	E
316 SS	S

ELASTOMER TRIM	
EPDM	0
Buna-Nitrile	1
Viton*	2
Neoprene*	3

*Consult factory for availability

MANUAL OPERATORS	
Lever/Wrench	L
Direct Nut	TC
Above Ground Gear & Handwheel	AGHW
Above Ground Gear & 2" Nut	AGNUT
Buried Gear with 2" Nut	BG
Memory Stop Gear & Handwheel	MGHW
Above Ground Gear & Chainwheel	AGCW

Valves are only tested for bi-directional shut-off if specified at time of order. Contact a Pratt® representative for bi-directional ratings.

PRESSURE RATING

613A	NPT	400PSI
611A	ANSI 125	175PSI
603AS	NPT	400PSI
601S	ANSI 150	175PSI

Body Hydrotest = 150% of rated pressure

Seat Test = 100% of rated pressure

Testing per AWWA C517

ELASTOMERS AVAILABLE FOR BALLCENTRIC® PLUG VALVE

NITRILE

A general purpose material sometimes referred to as BUNA-N or HYCAR with a -20°F to 212°F temperature range. Used on sewage, water, hydrocarbon and mineral oils.

EPDM

An excellent polymer for use on chilled water through to LP steam applications having a temperature range of -35°F to 250°F. Resistance to many acids, alkalies, detergents, phosphate esters, alcohols and glycols is an added benefit.

NEOPRENE

This versatile material shows outstanding resistance to abrasion and ozone. Chemical resistance to a wide range of petroleum base products and dilute acids and alkalies. Temperature range -20°F to 225°F.

VITON

Retention of mechanical properties at high temperature is an important feature of this elastomer: temperature range is -10°F to 300°F. It also has excellent resistance to oils, fuels, lubricants and most mineral acids and aromatic hydrocarbons.

NOTE: Viton not for water or steam applications.

Technical Data

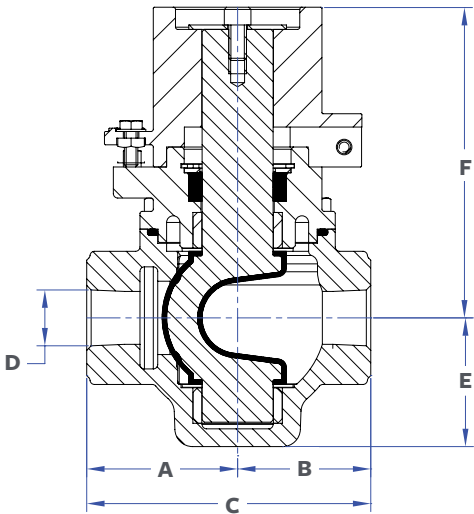
ELASTOMER SELECTION CHART

SERVICE	ELASTOMER	AVERAGE USEFUL TEMP. RANGE	SERVICE	ELASTOMER	AVERAGE USEFUL TEMP. RANGE	SERVICE	ELASTOMER	AVERAGE USEFUL TEMP. RANGE
Acetone	EPDM	-35°F to 250°F	Caustic Soda	EPDM	-35°F to 250°F	Oil, Animal	Nitrile	-20°F to 212°F
Air	EPDM	-35°F to 250°F	Cement Slurry	EPDM	-35°F to 250°F	Oil, Mobil Therm Light	Viton	10°F to 250°F
Air w/ Oil	Nitrile	0°F to 212°F	Copper Sulphate	EPDM	-35°F to 250°F	Oil, Mobil Therm 600	Viton	10°F to 250°F
Alcohol AMYL	EPDM	0°F to 212°F	Creosote (Coal)	Nitrile	-20°F to 212°F	Oil, Mobil Therm 603	Nitrile	-20°F to 212°F
Alcohol Aromatic	Viton	10°F to 250°F	Coal Slurry	Nitrile	-20°F to 212°F	Oil, Lubricating	Nitrile	-20°F to 212°F
Alcohol Butyl	Neoprene	-20°F to 225°F	Diesel Fuel No. 3	Nitrile	-20°F to 212°F	Oil, Vegetable	Nitrile	-20°F to 212°F
Alcohol Denatured	Nitrile	-20°F to 212°F	Diethylene Glycol	EPDM	-35°F to 250°F	Paint, Latex	Nitrile	-20°F to 212°F
Alcohol Ethyl	EPDM	-20°F to 250°F	Ethylene Glycol	EPDM	-35°F to 250°F	Phosphate Ester	EPDM	-35°F to 250°F
Alcohol Grain	Nitrile	-20°F to 212°F	Fatty Acid	Nitrile	-20°F to 212°F	Propane	Nitrile	-20°F to 212°F
Alcohol Isopropyl	Neoprene	-20°F to 225°F	Fuel Oil No. 2	Nitrile	-20°F to 212°F	Rape Seed Oil	EPDM	-35°F to 250°F
Alcohol Methyl	EPDM	-20°F to 250°F	Fertilizer Liquid H ₄ N ₂ O ₂	EPDM	-35°F to 250°F	Sewage with Oils	Nitrile	-20°F to 212°F
Ammonia Anhydrous	Neoprene	-20°F to 225°F	Gasoline Keg	Nitrile	-20°F to 212°F	Sodium Hydroxide 20%	EPDM	-35°F to 250°F
Ammonium Nitrate	EPDM	-20°F to 250°F	Gas Natural	Nitrile	-20°F to 212°F	Starch	EPDM	-35°F to 250°F
Ammonia, water	EPDM	-20°F to 250°F	Glue, Animal	Nitrile	-20°F to 212°F	Steam to 250°F	EPDM	-35°F to 250°F
Animal Fats	Nitrile	-20°F to 212°F	Green Liquor	EPDM	-20°F to 212°F	Stoddard, Solvent	Nitrile	-20°F to 80°F
Black Liquor	EPDM	-20°F to 250°F	Hydraulic Oil (Petro)	Nitrile	-20°F to 212°F	Sulphuric Acid 10% 50%	Neoprene	-20°F to 158°F
Blast Furnace Gas	Neoprene	-20°F to 225°F	Hydrogen	Nitrile	-20°F to 212°F	Sulphuric Acid 100%	Viton	10°F to 300°F
Butane	Nitrile	-20°F to 212°F	JF ₄ , JP ₅	Viton	-20°F to 212°F	Trichloroethylene Dry	Viton	10°F to 300°F
Bunker Oil "C"	Nitrile	-20°F to 212°F	Kerosene	Nitrile	0°F to 212°F	Triethanol Amine	EPDM	-35°F to 250°F
Calcium Chloride	EPDM	-20°F to 250°F	Ketone	EPDM	-35°F to 250°F	Varnish	Viton	10°F to 300°F
Carbon Dioxide	EPDM	-20°F to 250°F	Lime Slurry	EPDM	-35°F to 250°F	Water, Fresh	EPDM	-35°F to 250°F
Carbon Monoxide (Cold)	Neoprene	-20°F to 150°F	Methane	Nitrile	-20°F to 212°F	Water, Salt	EPDM	-35°F to 250°F
Carbon Monoxide (Hot)	Viton	10°F to 300°F	Methyl Ethyl Ketone	EPDM	-35°F to 250°F	Xylene	Viton	10°F to 300°F
Carbon Tetrachloride	Viton	10°F to 300°F	Naptha (Berzin)	Nitrile	-20°F to 212°F			

NOTE: Above elastomer / temperature chart are guidelines only.

DIMENSION DRAWING

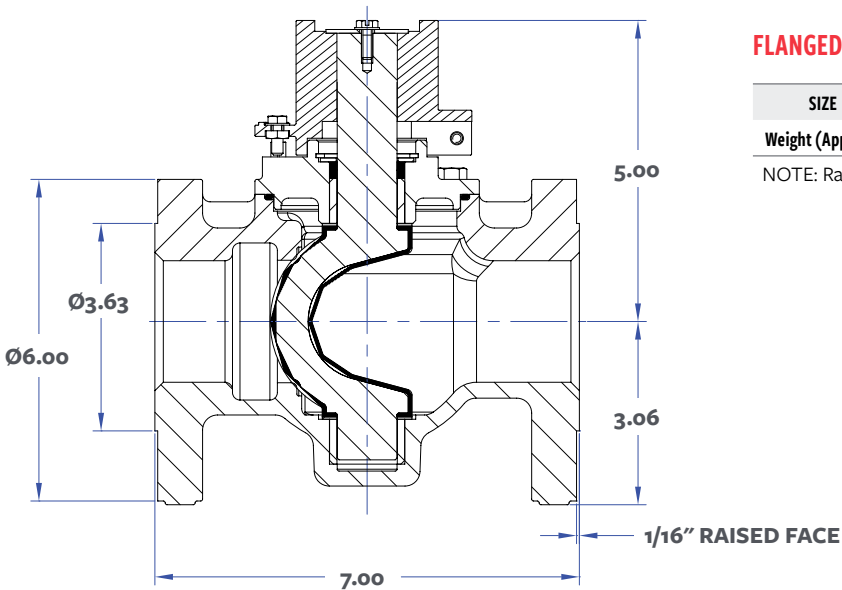
Threaded End: Fig. 613A Ductile Iron / 603AS Stainless Steel 1/2" - 2"



THREADED ENDS

SIZE	1/2	3/4	1	1 1/4	1 1/2	2
A	2.13	2.13	2.13	3.00	3.00	3.00
B	1.88	1.88	1.88	2.50	2.50	2.50
C	4.00	4.00	4.00	5.50	5.50	5.50
D	1/2" NPT	3/4" NPT	1" NPT	1 1/4" NPT	1 1/2" NPT	2" NPT
E	1.81	1.81	1.81	2.50	2.50	2.50
F	4.38	4.38	4.38	5.00	5.00	5.00
Weight (Approx.)	7.50	7.25	7.00	13.00	11.75	10.00

Flanged End: Fig. 611A Ductile Iron / 601S Stainless Steel 2"



FLANGED ENDS

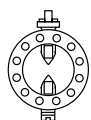
SIZE	2
Weight (Approx.)	18.00

NOTE: Raised face is only on the 2" fig. 601AS Stainless Steel

PRATT®

a **MUELLER** brand

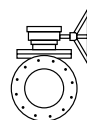
PRATT® Product Guide



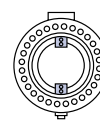
MODEL 2FII



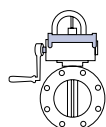
MONOFLANGE MKII



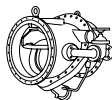
PLUG VALVES



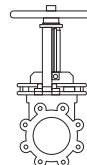
TRITON® XR70



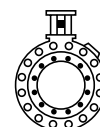
**INDICATING BUTTERFLY
VALVES UL & FM APPROVED**



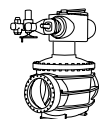
**TILTING DISC
CHECK VALVES**



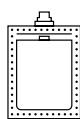
KNIFE GATE VALVES



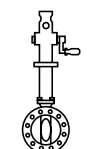
**N-STAMP NUCLEAR
BUTTERFLY VALVES**



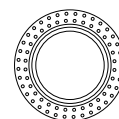
CONE VALVES



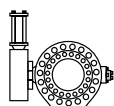
RECTANGULAR



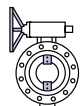
**PIVA POST INDICATING VALVES
ASSEMBLY UL & FM APPROVED**



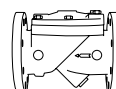
SLEEVE VALVES



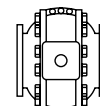
**RUBBER SEATED
BALL VALVES**



TRITON® 250



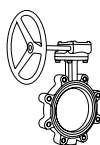
CHECK VALVES



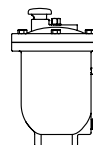
**METAL SEATED
BALL VALVE**



CONTROL SYSTEMS



INDUSTRIAL VALVES



AIR VALVES

For more information about us or to view our full line of water products, please visit www.prattvalve.com or call Pratt customer service at 1.800.423.1232.

Mueller refers to one or more of Mueller Water Products, Inc., a Delaware corporation ("MWP"), and its subsidiaries. MWP and each of its subsidiaries are legally separate and independent entities when providing products and services. MWP does not provide products or services to third parties. MWP and each of its subsidiaries are liable only for their own acts and omissions and not those of each other. MWP brands include Mueller®, Echologics®, Hydro Gate®, Hydro-Guard®, Jones®, Mi.Net®, Milliken®, Pratt®, Singer®, and U.S. Pipe Valve & Hydrant. Please see www.muellerwp.com/about to learn more.

Copyright © 2018 Henry Pratt Company, LLC. All Rights Reserved. The trademarks, logos and service marks displayed in this document are the property of Mueller Water Products, Inc., its affiliates or other third parties. Products marked with a section symbol (§) are subject to patents or patent applications. For details, visit www.mwppat.com. These products are intended for use in potable water applications. Please contact your Mueller Sales or Customer Service Representative concerning any other application(s).

F 13789 11/18

MUELLER