

PRATT®

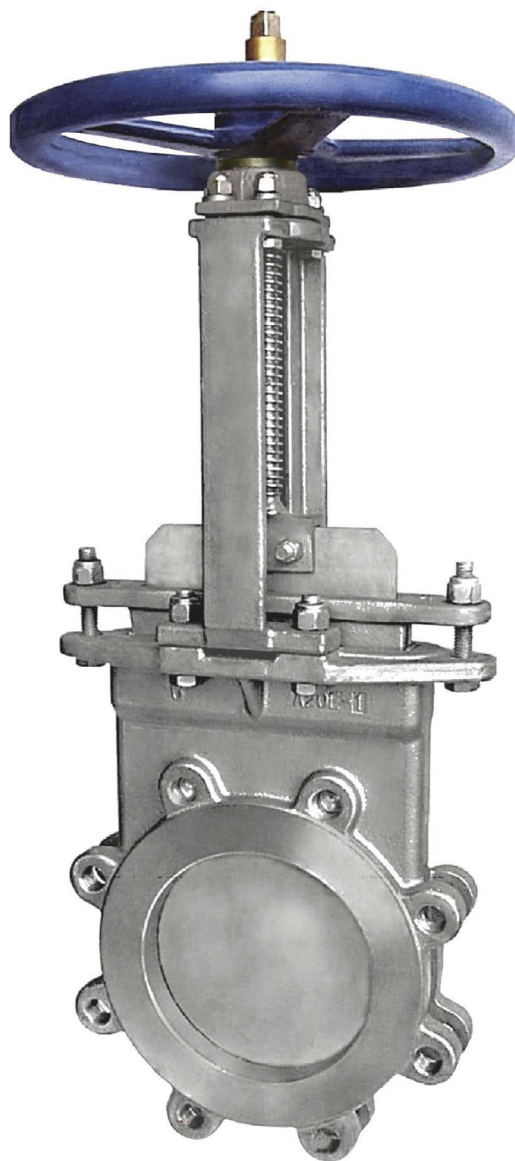
a MUELLER brand

LVC FIGURE 77 STAINLESS STEEL RESILIENT SEATED, BI-DIRECTIONAL KNIFE GATE VALVE

Knife Gate Valve

FEATURES

- Cast stainless steel body, packing gland, and yoke.
- Rubber seat provides a BI-DIRECTIONAL drip tight seal across the gate from 0 to 150 PSI.
- Gate design withstands full 150 PSI rated pressure as required by MSS SP-81.
- Bi-directional Buna resilient seat standard.
- Also available in EPDM, Viton, Neoprene and other materials. See reverse side for temperature limits.
- Compact wafer configuration to TAPPI and MSS standard face-to-face.
- Heavy duty body design resists deflection from line loads and internal pressure.
- Rubber seat is flush with the bottom of the port ELIMINATING any pockets in the bottom of the valve that will collect media material.
- Smooth flow non-clogging full port design.
- Heavy duty cast stainless steel yoke will not bend or twist under extreme loads.
- Easy conversion from handwheel operator
- to hydraulic or pneumatic cylinder, bevel gear, chainwheel, electric motor, or fail safe spring cylinder operator using existing cast yoke.
- Bonnetless, outside screw and yoke, non-rising handwheel, and rising stem.
- Enclosed bronze stem bushing provides reduced operating torque and protection of the stem bushing in harsh environments.
- Stainless steel stem resists corrosion.
- Standard TFE lubricated synthetic packing (TLSP).
- Full port ID.
- MSS SP-81 Stainless Steel, Bonnetless, Flanged Knife Gate Valves.
- AWWA C520-10 Knife Gate Valves, 2in.—96in.



MUELLER

MATERIALS OF CONSTRUCTION

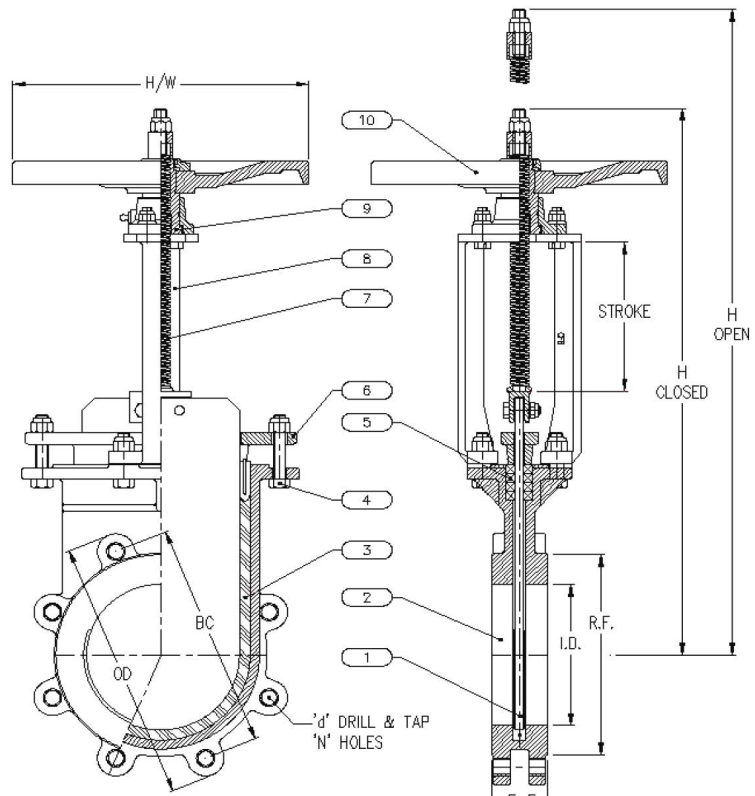
MODEL 77

1	Gate	SS
2	Body	SS
3	Seat	Buna-N**
4	Bolts	SS
5	Packing	TLSP*
6	Gland	SS
7	Stem	SS
8	Yoke	SS
9	Stem Nut	Bronze
10	Handwheel	DI

**TLSP = TFE Lubricated Synthetic Packing.
 Stocked in 304 and 316 SS. 317 SS Available.
 Normally supplied with handwheel for manual operation, but can be modified for chain wheel, bevel gear, fail safe spring cylinder, electric motor, hydraulic or pneumatic cylinder operator.

MATERIALS OF CONSTRUCTION

MATERIAL**	TEMP. LIMITS °F (°C)
Buna	-35 (-37) to 250 (121)
EPDM(P)	-35 (-54) to 300 (149)
Neoprene	-40 (-40) to 225 (107)
Viton	-20 (-29) to 400 (204)



DIMENSIONS (INCHES) AND WEIGHTS

	SIZE	2	3	4	6	8	10	12	14	16	18	20	24
Face-to-Face	F-F	1-7/8	2	2	2-1/4	2-3/4	2-3/4	3	3	3-1/2	3-1/2	4-1/2	4-1/2
Flange OD	OD	6	7-1/2	9	11	13-1/2	16	19	21	23-1/2	25	27-1/2	32
Bolt Circle	BC	4-3/4	6	7-1/2	9-1/2	11-3/4	14-1/4	17	18-3/4	21-1/4	22-3/4	25	29-1/2
Flanged Raised Face	RF	3-5/8	5	6-3/16	8-1/2	10-5/8	12-3/4	15	16-1/4	18-1/2	21	23	27-1/4
Inside Diameter	ID	2	3	4	6	8	10	12	13-14	15-1/4	17-1/4	19-1/4	23-1/4
No. of Bolt Holes	N	4	4	8	8	8	12	12	12	16	16	20	20
Hole D&T Size	D	5/8"-11	5/8"-11	5/8"-11	3/4"-10	3/4"-10	7/8"-9	7/8"-9	1"-8	1"-8	1-1/8"-7	1-1/8"-7	1-1/4"-7
C/L to Top-Closed	H-CLS	16-7/8	17-5/16	19-3/16	23-3/16	27-7/16	32	36	41-9/16	45-5/8	51	56	62-7/8
C/L to Top-Open	H-OPN	19-1/8	20-7/8	23 1/2	29-1/2	35-3/4	42-5/16	48-5/16	55-3/16	61-3/16	68-3/4	75-5/8	85-5/8
Handwheel Dia.	H/W	8	8	8	13	12	16	16	20	20	20	20	24
Weight - lbs	WT	26	30	46	62	90	141	190	260	360	422	712	988
Stroke	S	2-1/4	3-5/16	4-5/16	6-5/16	8-5/16	10-5/16	12-1/16	13-5/8	15-1/16	17-3/4	19-5/8	22-3/4

Mueller refers to one or more of Mueller Water Products, Inc., a Delaware corporation ("MWP"), and its subsidiaries. MWP and each of its subsidiaries are legally separate and independent entities when providing products and services. MWP does not provide products or services to third parties. MWP and each of its subsidiaries are liable only for their own acts and omissions and not those of each other. MWP brands include Mueller®, Echologics®, Hydro Gate®, Hydro-Guard®, Jones®, MiNet®, Milliken®, Pratt®, Pratt Industrial®, Sentryx®, Singer®, and U.S. Pipe Valve & Hydrant. Please see www.muellerwp.com/about to learn more.

Copyright © 2025 Henry Pratt Company, LLC. All Rights Reserved. The trademarks, logos and service marks displayed in this document are the property of Mueller Water Products, Inc., its affiliates or other third parties. Products above marked with a section symbol (§) are subject to patents or patent applications. For details, visit www.mwppat.com. These products are intended for use in potable water applications. Please contact your Mueller Sales or Customer Service Representative concerning any other application(s).