

# PRATT®

a **MUELLER** brand

## COMPACT CHECK VALVES

Engineering Creative Solutions for Fluid Systems Since 1901



**MUELLER**

## TABLE OF CONTENTS

### SPRING LOADED CHECK VALVES

Standard Features..... 1

### DOUBLE DISC CHECK VALVE

Scope of the Line..... 1

Technical Specifications ..... 1

Drawing..... 2

Materials of Construction ..... 2

### GLOBE STYLE CHECK VALVE

Scope of the Line..... 3

Technical Specifications ..... 3

Drawing..... 4

Materials of Construction ..... 4

### COMPACT WAFER-SILENT CHECK VALVE

Scope of the Line..... 5

Technical Specifications ..... 5

Drawing..... 6

Materials of Construction ..... 6

### PRESSURE DROP CHARTS

Double Disc Check Valve..... 7

Globe Style Check Valve..... 7

Compact Wafer-Silent Check Valve..... 8

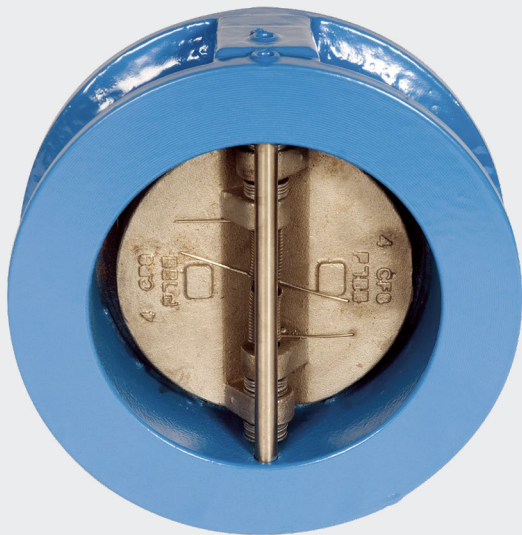
# SCOPE OF THE LINE

## Double Disc Check Valve – Series 740A

### SPRING LOADED CHECK VALVES

#### STANDARD FEATURES

- Spring Loaded for Non-Slam Closure
- Heavy Duty Ductile Iron Body
- Automatic Operation
- Designed for ANSI Class 125 Flange Bolting
- Economical Purchase Price
- Suitable for Horizontal or Vertical (up) Piping
- Available in Sizes 2" thru 48"
- Compact Design



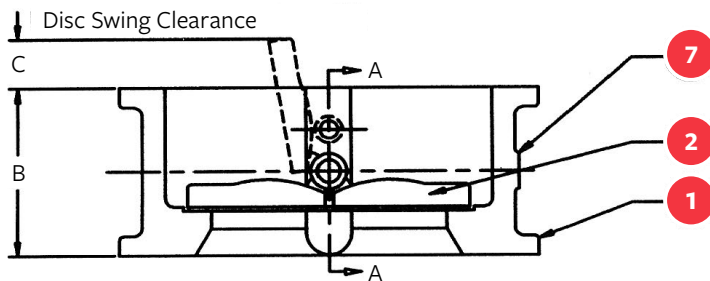
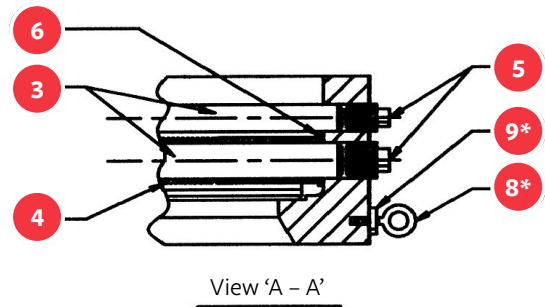
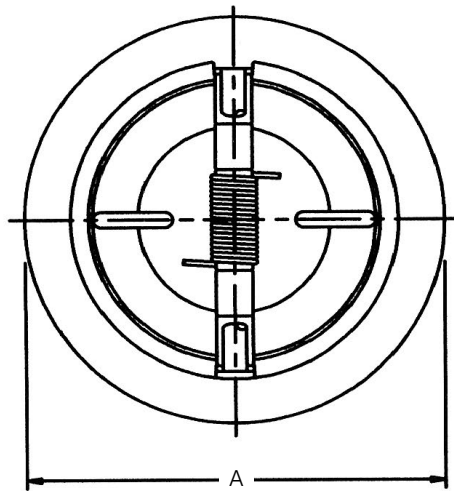
<b>BODY</b>	Ductile Iron-Wafer Pattern
<b>DISC</b>	304 Stainless Steel
<b>SEAT</b>	EPDM (Elastomer)
<b>RATING</b>	250 psi
<b>12" AND SMALLER</b>	2" Through 48"

### DOUBLE DISC CHECK VALVE

#### TECHNICAL SPECIFICATIONS

Check valve shall be of the double disc, wafer style with torsion spring induced closure. Valve shall be Wafer style for bolting between ANSI Class 125 flanges and shall be rated for 250 psi service. Valves have a Ductile Iron body (ASTM A-536 65-45-12) to fit inside 125# ANSI bolt circles, a two piece Stainless Steel disc (ASTM type 304), type 304 Stainless Steel dual shafts, ASTM A313, type 304 / 316 Stainless Steel torsion spring and have an integrally molded elastomer seat vulcanized to the body. Valve for horizontal flow shall be installed with the shafts in vertical position. Double disc check valve shall be Pratt® Series 740A as manufactured by Pratt.

# DOUBLE DISC CHECK VALVE – SERIES 740A



## MATERIALS OF CONSTRUCTION

ITEM	QTY	DESCRIPTION	MATERIAL
1	1	Body / Seat	Ductile Iron / EPDM
2	2	Disc	304 Stn. Stl.
3	2	Shaft	304 Stn. Stl.
4	2	Spring	304 / 316 Stn. Stl.
5	4	Plug	304 Stn. Stl.
6	AR	Washer	304 Stn. Stl.
7	1	Name Plate	Aluminum
8*	2	Eye Bolt	Steel
9*	2	Hex Nut	Steel

\*Note: Items 8 & 9 for 8" and Larger Valves

SIZE	2	2.5	3	4	5	6	8	10	12	14	16	18	20	24	30	36	42	48
<b>A</b>	4.10	4.88	5.33	6.88	7.75	8.75	11	13.38	16.13	17.75	20.25	21.63	23.88	28.25	34.75	41.25	47.88	54.50
<b>B</b>	2.13	2.13	2.25	2.5	2.75	3	3.75	4.25	5.63	7.25	7.5	8	8.38	8.75	12	15.25	17.00	20.63
<b>C</b>	—	.16	.63	.94	1.34	1.72	2.5	3.38	4.13	3.13	4.38	5.13	6.0	8.5	11	11.38	12.75	19.70
<b>WT</b>	8.8	12.6	18.3	26.2	34.8	42.1	75	119.5	188.1	227.3	282.2	337.3	370.6	638.2	1050	1600	2090	3400

Note: Drawings are for information purposes only; please request certified drawings before preparing piping diagrams.

# SCOPE OF THE LINE

## Globe Style Check Valve – Series 821A



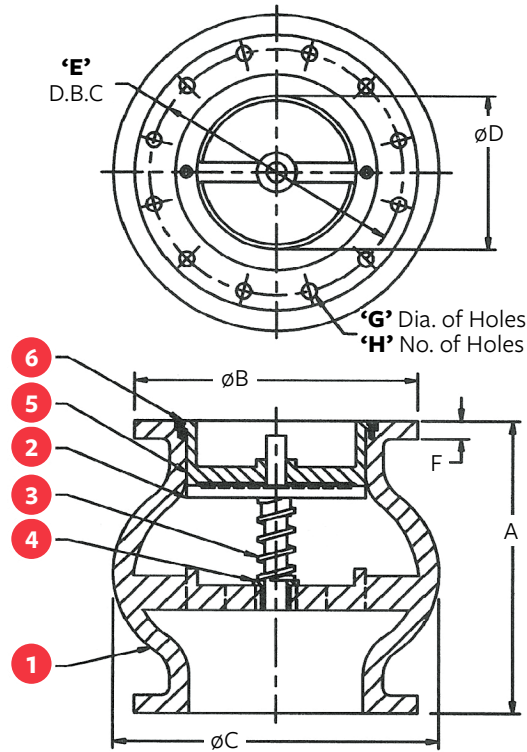
<b>BODY</b>	Ductile Iron
<b>DISC</b>	Stainless Steel
<b>SEAT</b>	Stainless Steel / EPDM
<b>RATING</b>	250 psi
<b>AVAILABILITY</b>	2" Through 36"

## GLOBE STYLE CHECK VALVE

### TECHNICAL SPECIFICATIONS

Check valve shall be of the silent operating type and the same size as the entering pipe. Globe style shall be rated for 250 psi service, have a Ductile Iron body (ASTM A-536 65-45-12), 125# ANSI Flat Face Flanges, ASTM A313 Type 304 Stainless Steel helical or conical spring, a Stainless Steel (ASTM type 304) seat and dual guided disc (top and bottom), 304 Stainless Steel guide bushing and type 304 Stainless Steel guide pins. Check valve to have a minimum open area in the body of 110% of the area of the entering or corresponding pipe. Valves to operate silently in either vertical or horizontal positions, flow up or down. Globe style check valve shall be Pratt® Series 821A as manufactured by Pratt.

# GLOBE STYLE CHECK VALVE – SERIES 821A



## MATERIALS OF CONSTRUCTION

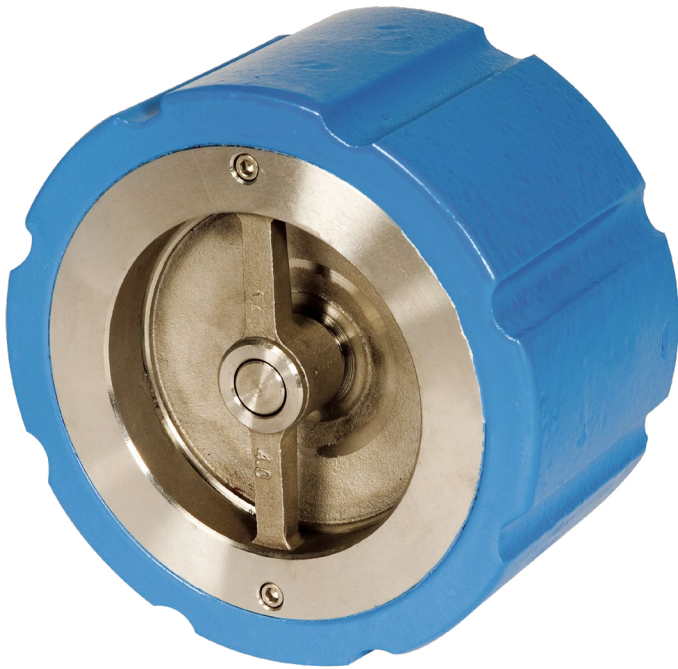
ITEM	QTY	DESCRIPTION	MATERIAL
1	1	Body	Ductile Iron
2	1	Disc	304 Stn. Stl.
3	1	Spring	304 Stn. Stl.
4	1	Bushing	304 Stn. Stl.
5	1	Seat	304 Stn. Stl. / EPDM
6	AR	Capscrew	304 Stn. Stl.

SIZE	2	2.5	3	4	5	6	8	10	12	14	16	18	20	24	30	36
A	4	5.5	6	7.25	8.5	9.75	12.5	15.5	14.25	15.75	17.63	18.75	20.63	24	30	36
B	6	7	7.5	9	10	11	13.5	16	19	21	23.5	25	27.5	32	38.75	46
C	4.63	6	6.88	8.5	9.75	11.13	16.13	17.88	19.13	22.5	26	29	32.75	34	42.50	53
D	2.13	2.75	3	4	5	6	8	10	12	13.88	15.25	16.75	19.25	20.75	30.50	36.50
E	4.75	5.5	6	7.5	8.5	9.5	11.75	14.25	17	18.75	21.25	22.75	25	29.5	36	42.75
F	.62	.69	.75	.94	.94	1	1.12	1.19	1.25	1.38	1.44	1.56	1.69	1.88	3	3.50
G	.75	.75	.75	.75	.88	.88	.88	1	1	1.12	1.12	1.25	1.25	1.38	1.38	1.62
H	4	4	4	8	8	8	8	12	12	12	16	16	20	20	28	32
WT	14.3	24.4	28.6	44.1	56	83.4	142.4	219	362.6	465.1	660.5	919	1174	1586	2027	3255

**Note:** Drawings are for information purposes only; please request certified drawings before preparing piping diagrams.

# SCOPE OF THE LINE

## Compact Wafer-Silent Check Valve – Series 720A



<b>BODY</b>	Ductile Iron
<b>DISC</b>	304 Stainless Steel
<b>SEAT</b>	Stainless Steel / EPDM
<b>RATING</b>	250 psi
<b>AVAILABILITY</b>	2" Through 12"

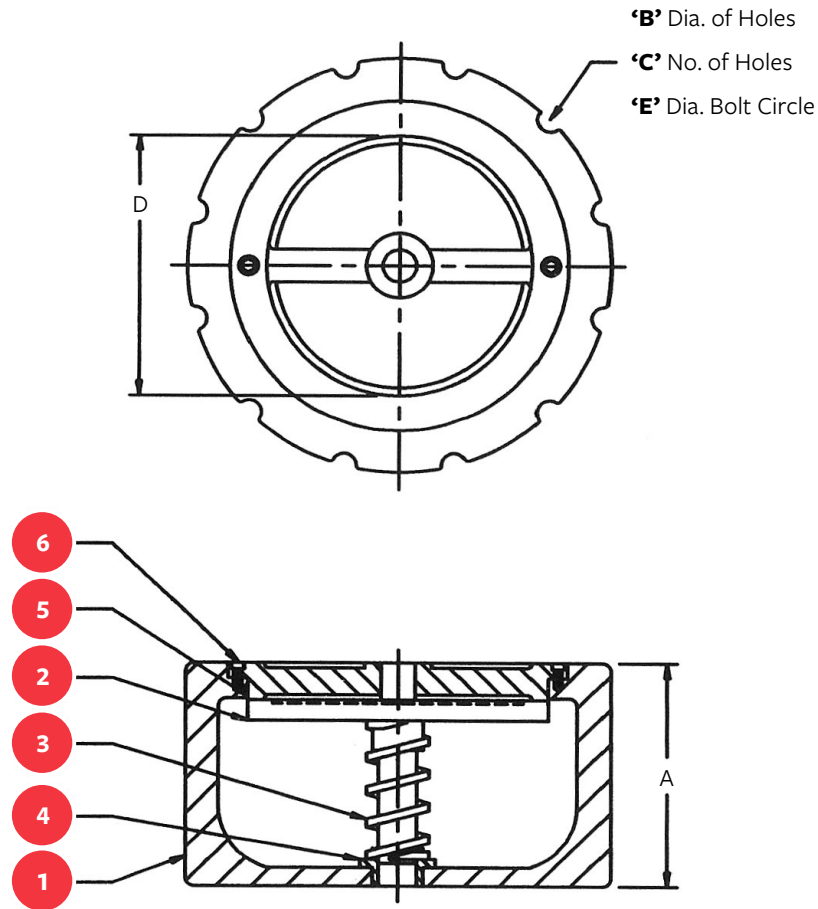
### COMPACT WAFER-SILENT CHECK VALVE

#### TECHNICAL SPECIFICATIONS

Check valve shall be of the silent wafer type and the same size as the entering pipe. Valves shall be the compact wafer style and have a pressure and temperature rating equal to or greater than the pipeline in which they are installed. Compact wafer-silent style check valves thru 6 inches shall be rated for 250 psi service for installation between ANSI Class 125 flanges, have a Ductile Iron body (ASTM A-536 65-45-12), ASTM A313, Type 304 Stainless Steel helical or conical spring, a Stainless Steel guide bushing and type 304 Stainless Steel guide pins. Valves are to operate silently in either vertical or horizontal positions, flow up or down. Compact wafer-silent check valve shall be Pratt® Series 720A as manufactured by Pratt.



# COMPACT WAFER-SILENT CHECK VALVE – SERIES 720A



## MATERIALS OF CONSTRUCTION

ITEM	QTY	DESCRIPTION	MATERIAL
1	1	Body	Ductile Iron
2	1	Disc	304 Stn. Stl.
3	1	Spring	304 Stn. Stl.
4	1	Bushing	304 Stn. Stl.
5	1	Seat	304 Stn. Stl. / EPDM
6	AR	Cap screw	304 Stn. Stl.

SIZE	2	2.5	3	4	5	6	8	10	12
A	2.63	2.88	3.13	4	4.75	5.5	6.5	8.25	11.25
B	0.75	0.75	0.75	0.75	0.88	0.88	0.88	1.00	1.00
C	4	4	4	8	8	8	8	12	12
D	2.0	2.5	3.0	4.0	5.0	6.0	8.0	10.0	12.0
E	4.75	5.50	6.00	7.50	8.50	9.50	11.75	14.25	17.0
APPROX. WGT. (LB.)	5.5	8.0	10.0	19.0	27.0	39.0	86.0	165.0	339.0

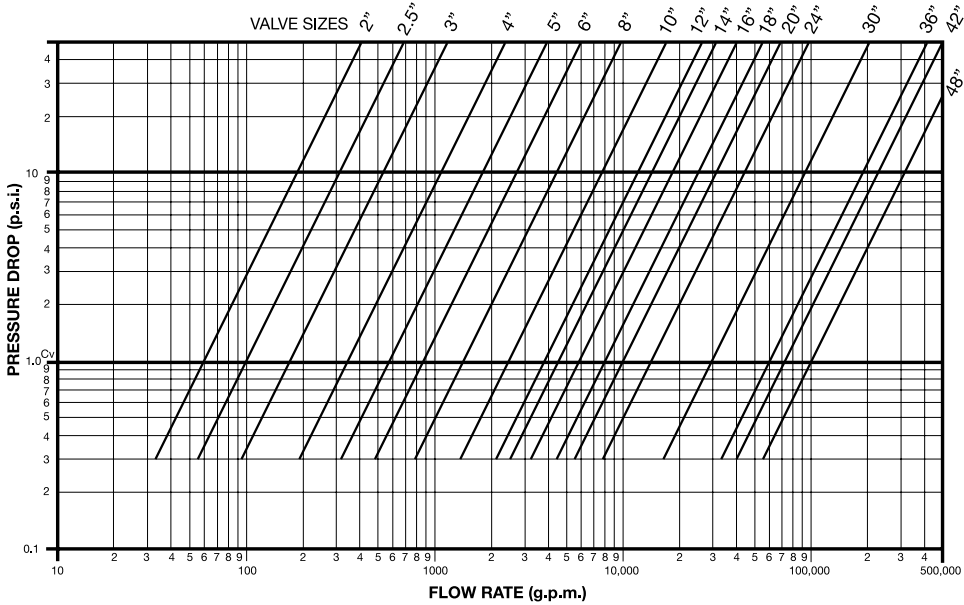
**Note:** Drawings are for information purposes only; please request certified drawings before preparing piping diagrams.



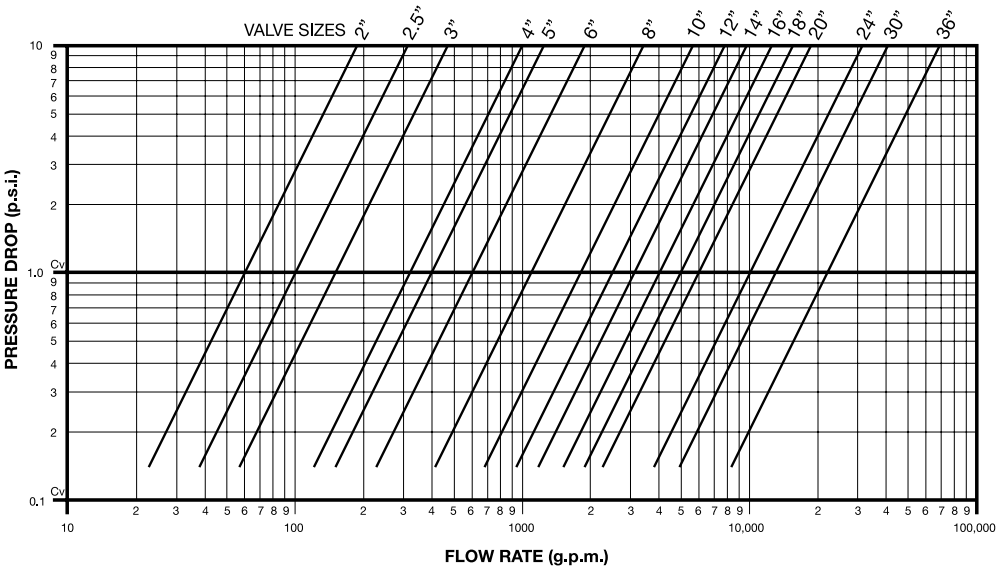
# PRESSURE DROP CHART

For Double Door Type Check (740A) & Globe Type Silent Check (821A) Valves

## DOUBLE DISC CHECK VALVE – SERIES 740A



## GLOBE STYLE CHECK VALVE – SERIES 821A



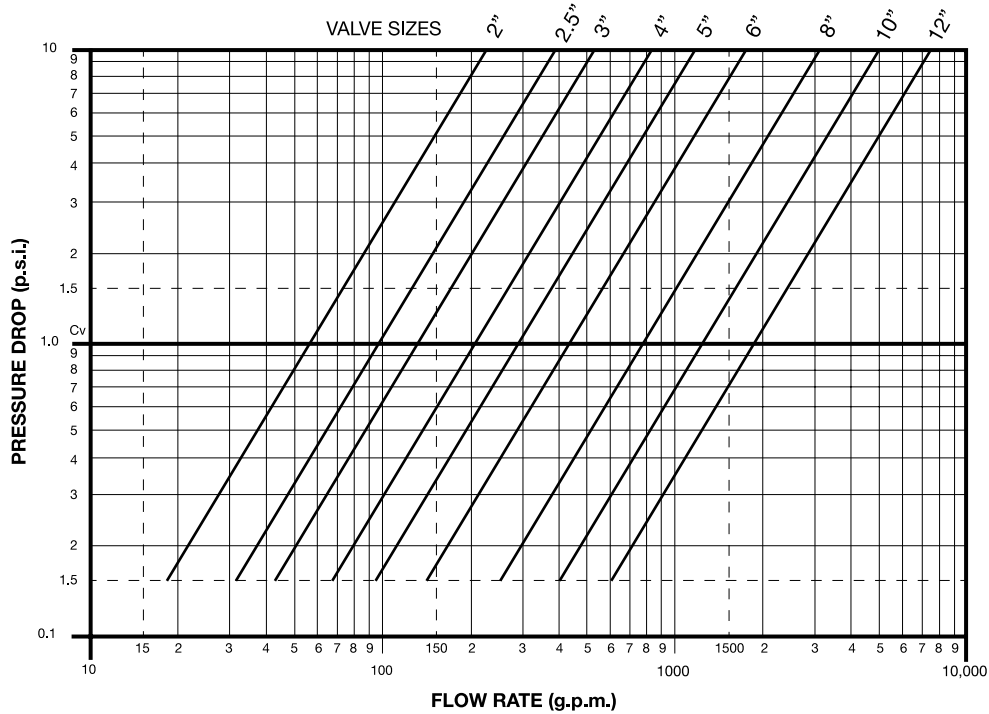
These charts are based on the flow of clean water at ambient temperature. Consult our Engineering Department for pressure drop information on steam, gases or viscous fluids.

Good piping practice recommends placement of check valves a distance equal to 5 to 10 pipe diameters from any turbulence producing device such as elbow, pumps etc.

# PRESSURE DROP CHART

## For Compact Wafer Silent Check (720A) Valve

### COMPACT WAFER SILENT CHECK VALVE – SERIES 720A



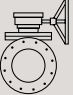
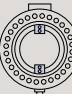
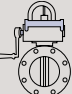

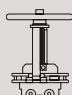






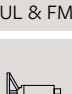
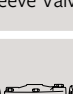
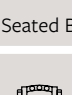
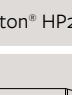
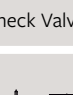
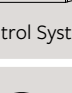


This chart is based on the flow of clean water at ambient temperature. Consult our Engineering Department for pressure drop information on steam, gases or viscous fluids.

Good piping practice recommends placement of check valves a distance equal to 5 to 10 pipe diameters from any turbulence producing device such as elbow, pumps etc.

# NOTES

## PRATT® PRODUCT GUIDE

 Model 2FI	 Monoflange MKII	 Plug Valve
 Triton® XR70	 Indicating Butterfly Valve UL & FM approved	 Tilting Disc Check Valve
 Knife Gate Valve	 N-Stamp Nuclear Butterfly Valve	 Cone Valve
 Rectangular	 PIVA Post Indicating Valve Assembly UL & FM approved	 Sleeve Valve
 Rubber Seated Ball Valve	 Triton® HP250	 Check Valve
 Metal Seated Ball Valve	 Control Systems	 Plunger Valve
 Air Valve		

401 S. Highland Ave., Aurora, IL 60506, [moreinfo@prattvalve.com](mailto:moreinfo@prattvalve.com), **P:** 1.800.423.1323

**For more information about Pratt or to view our full line of water products, please visit [www.prattvalve.com](http://www.prattvalve.com) or call Pratt customer service at 1.800.423.1323.**

Mueller refers to one or more of Mueller Water Products, Inc., a Delaware corporation ("MWP"), and its subsidiaries. MWP and each of its subsidiaries are legally separate and independent entities when providing products and services. MWP does not provide products or services to third parties. MWP and each of its subsidiaries are liable only for their own acts and omissions and not those of each other. MWP brands include Mueller®, Echologics®, Hydro Gate®, Hydro-Guard®, Jones®, Mi.Net®, Milliken®, Pratt®, Singer®, and U.S. Pipe Valve & Hydrant. Please see [www.muellerwp.com/about](http://www.muellerwp.com/about) to learn more.

Copyright © 2018 Henry Pratt Company, LLC. All Rights Reserved. The trademarks, logos and service marks displayed in this document are the property of Mueller Water Products, Inc., its affiliates or other third parties. Products above marked with a section symbol (§) are subject to patents or patent applications. For details, visit [www.prattvalve.com](http://www.prattvalve.com). These products are intended for use in potable water applications. Please contact your Mueller Sales or Customer Service Representative concerning any other application(s).