

PRATT®

a MUELLER brand

PRATT® HP350

Butterfly Valve



FEATURES

- Higher Pressure
- Wedge Size Range and End Connections
- Rubber Seat Located in Body
- Unique Disc Design
- Nonmetallic Bearings
- V-type Shaft Packing
- Actuators and Accessories

DESIGN AND CONSTRUCTION

- Ductile Iron Valve Body
- 17-4 Stainless Steel Shaft
- Ductile Iron Disc

SCOPE OF LINE

SIZES:

- 6" through 48" (FL Ends)
- 6" through 36" (MJ Ends)

PRESSURE:

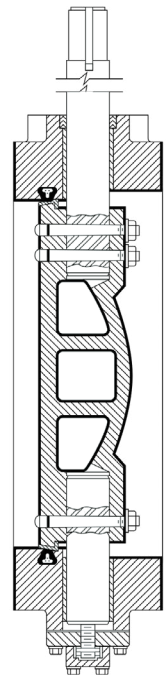
- 350 psi; 525 Shell Test

BODY STYLES:

- Flanged and Mechanical Joint Ends

ACTUATION OPTIONS:

- Nut; Handwheel; Buried Service



BENEFITS

- Working pressures to 350 psi with temperatures to 250° F
- Available in sizes 6" through 48" (FL x FL) and 6" through 36" (MJ x MJ)
- Reduces performance problems related to corrosive buildup in valve body and pipeline.
- Provides more strength, less weight, and greater free-flow area than conventional disc designs.
- Prevents galvanic corrosion and provides lower coefficient of friction.
- Self-adjusting, lasts the life of the valve.
- Available with manual traveling nut or worm gear, electric motor or cylinder actuator; plus full range of extensions, indicators, positioners, remote controls and other accessories.

MUELLER

SUGGESTED SPECIFICATION

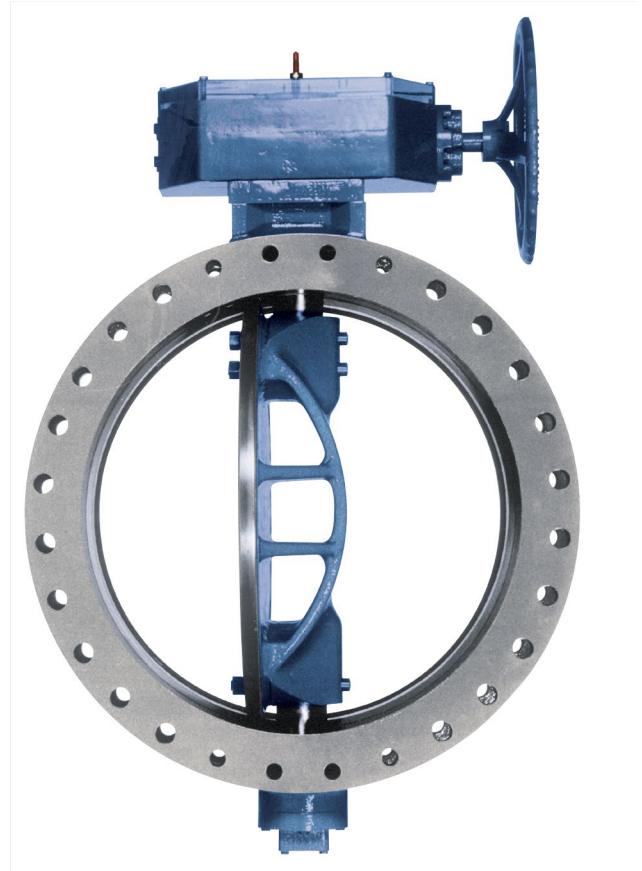
Butterfly valves shall be manufactured for a full differential pressure of 350 psig. Valves shall be Pratt Model HP350 and comply with the following details.

The body shall be constructed of Ductile Iron ASTM A536 Gr. 65-45-12, with flanged end connections drilled in accordance with ANSI B16.42, Class 300, or mechanical joint ends drilled in accordance with AWWA C111. The body wall thickness shall be in strict accordance with AWWA C504, Table #1, for Class 250B (gray / alloy iron).

The disc shall utilize an on-center shaft and symmetrical design, cast from Ductile Iron ASTM A536 Gr. 65-45-12. The disc edge shall be stainless steel type 316. Discs shall be retained by pins that extend through the full diameter of the shaft. The pin material shall be the same as the shaft material. Torque plugs or tangential fasteners shall not be allowed.

The shaft shall be made of ASTM A-564 Type 630 condition H-1150. The shaft seals shall be “V” type packing. Shaft seals shall be of a design allowing replacement without removing the valve shaft. No O-ring or “U” cup packing shall be allowed. The bearing shall be a Teflon® lined fiberglass backed bearing. Bearing load shall not exceed 1/5 of the compressible strength of the bearing or shaft material.

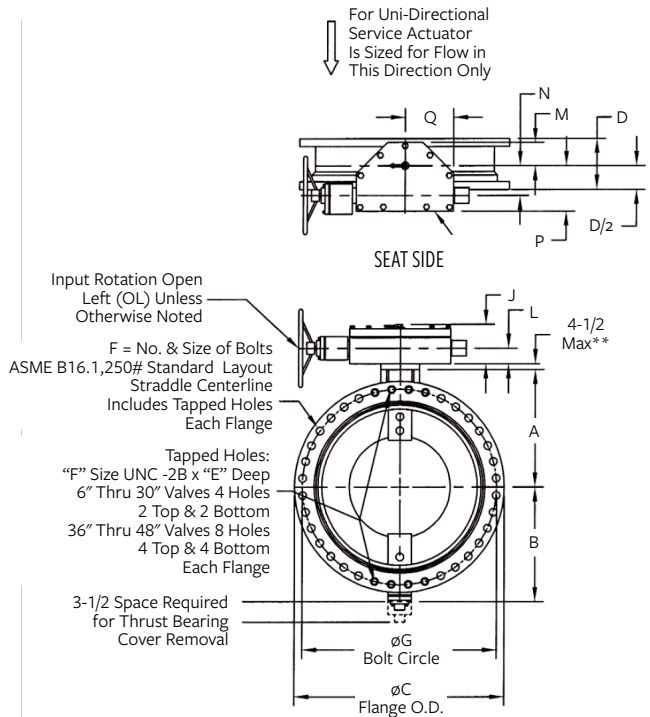
Manual actuators shall be of the traveling nut, self-locking type and shall be designed to hold the valve in any intermediate position between fully open and fully closed without fluttering or creeping. The actuator shall have mechanical stops that will withstand an input torque of 450 lb./ft. against each stop. Manual actuators shall conform to AWWA Standard C504 and shall be Pratt MDT or an approved equal.



6" - 48" HP350 FLANGED ENDS, MANUAL ACTUATOR

VALVE SIZE	A	B	C	D	E	F	G
6"	7-1/4	8-3/8	12-1/2	6	1-7/16	12-3/4	10-5/8
8"	8-1/2	9-5/8	15	8	1-5/8	12-7/8	13
10"	9-3/4	11	17-1/2	8	1-7/8	16 - 1	15-1/4
12"	11-1/2	12-5/8	20-1/2	8	2	16 - 1-1/8	17-3/4
14"	12-3/4	13-7/8	23	12	2-1/8	20 - 1-1/8	20-1/4
16"	14	15-1/8	25-1/2	12	2-1/4	20 - 1-1/4	22-1/2
18"	15-1/4	16-3/8	28	12	2-3/8	24 - 1-1/4	24-3/4
20"	17	17-5/8	30-1/2	12	2-1/2	24 - 1-1/4	27
24"	19-3/4	20-1/4	36	12	2-3/4	24 - 1-1/2	32
30"	25-5/8	26	43	12	3	28 - 1-3/4	39-1/4
36"	28-1/8	31-1/8	50	15	3-3/8	32 - 2	46
42"	32-1/8	35-1/8	57	15	3-11/16	36 - 2	52-3/4
48"	36-1/4	39-5/8	65	15	4	40 - 2	60-3/4

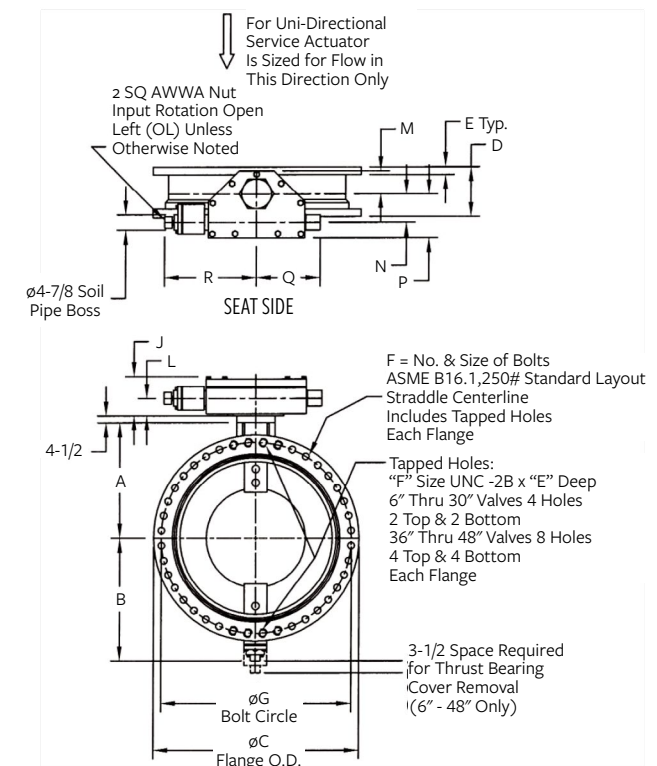
*See page 4 for MDT manual actuation dimensions.



6" - 48" HP350 FLANGED ENDS, BURIED SERVICE ACTUATOR

VALVE SIZE	A	B	C	D	E	F	G
6"	7-1/4	8-3/8	12-1/2	6	1-7/16	12-3/4	10-5/8
8"	8-1/2	9-5/8	15	8	1-5/8	12-7/8	13
10"	9-3/4	11	17-1/2	8	1-7/8	16 - 1	15-1/4
12"	11-1/2	12-5/8	20-1/2	8	2	16 - 1-1/8	17-3/4
14"	12-3/4	13-7/8	23	12	2-1/8	20 - 1-1/8	20-1/4
16"	14	15-1/8	25-1/2	12	2-1/4	20 - 1-1/4	22-1/2
18"	15-1/4	16-3/8	28	12	2-3/8	24 - 1-1/4	24-3/4
20"	17	17-5/8	30-1/2	12	2-1/2	24 - 1-1/4	27
24"	19-3/4	20-1/4	36	12	2-3/4	24 - 1-1/2	32
30"	25-5/8	26	43	12	3	28 - 1-3/4	39-1/4
36"	28-1/8	31-1/8	50	15	3-3/8	32 - 2	46
42"	32-1/8	35-1/8	57	15	3-11/16	36 - 2	52-3/4
48"	36-1/4	39-5/8	65	15	4	40 - 2	60-3/4

*See page 4 for MDT manual actuation dimensions.

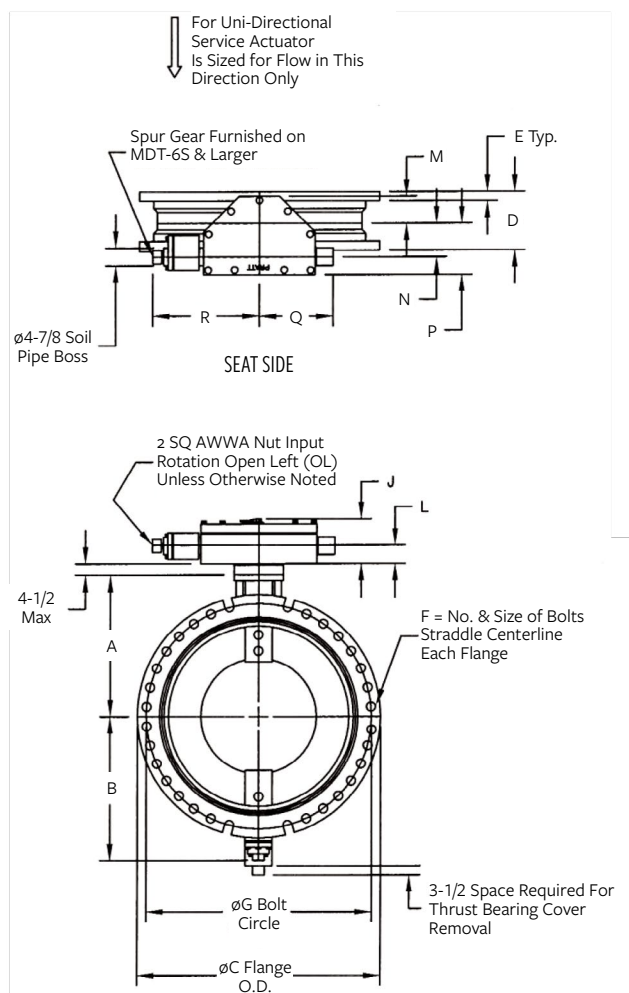
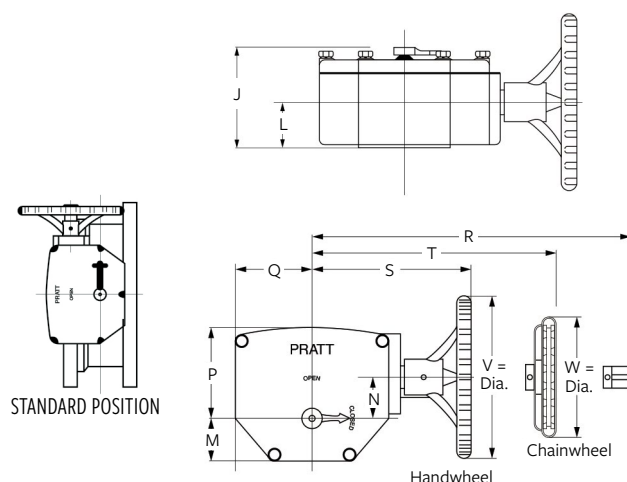


MUELLER

6" - 36" HP350 MECHANICAL JOINT ENDS, MANUAL ACTUATOR

Valve Size	A	B	C	D	E	F	G
6"	7-1/4	8-3/8	11-1/16	10	1-1/16	6-3/4	9-1/2
8"	8-1/2	9-5/8	13-5/16	10	1-1/8	6-3/4	11-3/4
10"	9-3/4	11	15-5/8	10	1-3/16	8-3/4	14
12"	11-1/2	12-5/8	17-7/8	10	1-1/4	8-3/4	16-1/4
14"	12-3/4	13-7/8	20-1/4	12-1/2	1-5/16	10-3/4	18-3/4
16"	14	15-1/8	22-1/2	12-1/2	1-3/8	12-3/4	21
18"	15-1/4	16-3/8	24-3/4	13-1/4	1-7/16	12-3/4	23-1/4
20"	17	17-5/8	27	13-1/4	1-1/2	14-3/4	25-1/2
24"	19-3/4	20-1/4	31-1/2	13-1/4	1-5/8	16-3/4	30
30"	25-5/8	25-1/2	39	18	1-13/16	20 - 1-1/8	36-7/8
36"	28-1/8	30-5/8	45-7/8	22	2	24 - 1-1/8	43-3/4

*See below for MDT manual actuation dimensions.



MDT MANUAL ACTUATOR DIMENSIONAL DATA

MDT SIZE	J	L	M	N	P	Q	R	S	T	V	W	# TURNS TO CLOSE
MDT-2S	4-11/16	2	2-1/8	2	4-1/2	4-1/4	8-1/4	7-7/8	7-7/8	8	9-1/8	32
MDT-3S	5-5/8	2-7/16	3-1/4	3-5/32	5-5/8	5-3/8	10-3/8	10-1/2	10-1/8	12	9-1/8	30
MDT-4S	6-3/8	2-27/32	3-3/8	4	7-5/16	6-3/4	11-5/16	11-1/2	11	12	9-1/8	40
MDT-5	7-9/16	3-15/32	4-1/2	5-1/2	8-3/4	10	17	17-3/16	17-3/16	18	10-7/16	44
MDT-5S	8-5/16	3-15/16	5-1/2	3-5/8	10-1/2	15-15/16	18-5/8	-	-	-	-	136
MDT-6S	10-3/16	5-1/16	7	8-1/4	12-5/8	18-9/16	26-1/2	-	-	-	-	215

Notes:

1. All dimensions shown in inches;
2. Furnished in standard position. Contact factory for other mounting positions.

401 S. Highland Ave., Aurora, IL 60506, moreinfo@prattvalve.com, P: 1.800.423.1323

For more information about Pratt or to view our full line of water products, please visit www.prattvalve.com or call Pratt customer service at 1.800.423.1323.

Mueller refers to one or more of Mueller Water Products, Inc., a Delaware corporation ("MWP"), and its subsidiaries. MWP and each of its subsidiaries are legally separate and independent entities when providing products and services. MWP does not provide products or services to third parties. MWP and each of its subsidiaries are liable only for their own acts and omissions and not those of each other. MWP brands include Mueller®, Echologics®, Hydro Gate®, Hydro-Guard®, Jones®, Mi.Net®, Milliken®, Pratt®, Singer®, and U.S. Pipe Valve & Hydrant. Please see www.muellerwp.com/about to learn more.

Copyright © 2018 Henry Pratt Company, LLC. All Rights Reserved. The trademarks, logos and service marks displayed in this document are the property of Mueller Water Products, Inc., its affiliates or other third parties. Products above marked with a section symbol (§) are subject to patents or patent applications. For details, visit www.prattvalve.com. These products are intended for use in potable water applications. Please contact your Mueller Sales or Customer Service Representative concerning any other application(s).

