

PRATT®

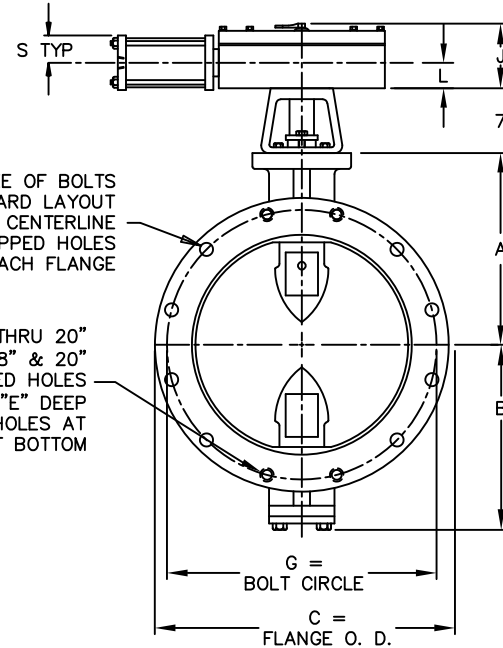
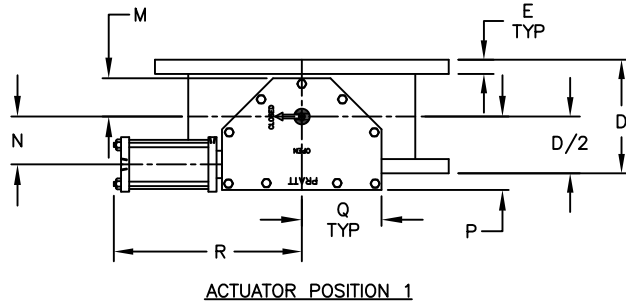
a MUELLER brand

GENERAL ARRANGEMENT DRAWING MODEL 2FII FLANGED BUTTERFLY VALVE MDT CYLINDER ACTUATOR W/REPLACEABLE PACKING BONNET

DRAWING NO.
S-2007

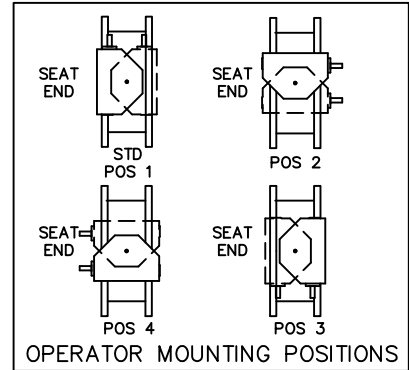
DATE
05-07-01

BY MJH APP. DWB



F = NO. & SIZE OF BOLTS
125# STANDARD LAYOUT
STRADDLE CENTERLINE
INCLUDES TAPPED HOLES
EACH FLANGE

CAST STEEL BODIES 4" THRU 20"
& CAST IRON BODIES 18" & 20"
HAVE 4 TAPPED HOLES
"F" SIZE UNC-2B X "E" DEEP
PER FLANGE. 2 HOLES AT
TOP AND 2 HOLES AT BOTTOM



- A. IGNORE SEAT SIDE DESIGNATION ON BFV SIZE 3" -20"
- B.
- C. CHECK WITH FACTORY WHEN SELECTING ALTERNATE MIRROR ACTUATOR STYLES.

NOTES:

1. ALL DIMENSIONS SHOWN IN INCHES.
2. "D" DIMENSION ±1/16" FOR 3" THRU 10" VALVES.
"D" DIMENSION ±1/8" FOR 12" THRU 20" VALVES.
3. FOR BOLTS SMALLER THAN Ø1-3/4, BOLT HOLES WILL BE 1/8" LARGER THAN DIAMETER OF BOLT.
FOR BOLTS Ø1-3/4 OR LARGER, BOLT HOLES WILL BE 1/4" LARGER THAN DIAMETER OF BOLT.
4. DIMENSIONS AND DRILLING OF END FLANGES CONFORM TO THE AMERICAN CAST IRON FLANGE STANDARDS, CLASS 125 (B16.1).
5. VALVES MANUFACTURED & TESTED IN ACCORDANCE WITH AWWA SPECIFICATION C-504 LATEST REVISION, CLASS 150B.
6. RECOMMENDATION FOR MATING FLANGES: WHERE INSULATING BUSHINGS ARE USED, IT IS NECESSARY THAT BOLT HOLES BE DRILLED OVERSIZE BY AN AMOUNT EQUAL TO TWO TIMES THE INSULATING SLEEVE THICKNESS TO MAINTAIN THE SAME MINIMUM CLEARANCE FOR BOLTS.

7. RECOMMENDED FILTRATION FOR CYLINDER SUPPLY MEDIA

AIR _____ 50 MICRONS (DRY)
OIL _____ 150 MICRONS
WATER _____ 150 MICRONS

* OPEN & CLOSED PORTS ARE REVERSED ON THESE SIZES.

VALVE SIZE	A	B	C	D	E	F	G
3	4-3/4	3-1/4	7-1/2	5	3/4	4--5/8	6
4	5-1/2	3-1/2	9	5	15/16	8--5/8	7-1/2
6	6-1/2	5-1/8	11	5	1	8--3/4	9-1/2
8	7-3/4	6-1/2	13-1/2	6	1-1/8	8--3/4	11-3/4
10	9	9-7/8	16	8	1-3/16	12--7/8	14-1/4
12	10-1/2	11-3/8	19	8	1-1/4	12--7/8	17
14	11-7/8	12-3/4	21	8	1-3/8	12--1	18-3/4
16	13-1/2	14-3/8	23-1/2	8	1-7/16	16--1	21-1/4
18	14-3/8	15-1/4	25	8	1-9/16	16--1-1/8	22-3/4
20	16	16-7/8	27-1/2	8	1-11/16	20--1-1/8	25

ACTUATOR SIZE	CYLINDER SIZE		J	L	M	N	P	Q	R	S	XX
	BORE	STROKE									
MDT-2S	2-1/2	4	4-11/16	2	2-1/8	2	4-1/2	4-1/2	13-1/16	1-3/4	3/8
MDT-2S	4	4	4-11/16	2	2-1/8	2	4-1/2	4-1/2	13-1/16	2-3/8	1/2
MDT-2S	5	4	4-11/16	2	2-1/8	2	4-1/2	4-1/2	13-13/16	2-7/8	1/2
MDT-3S	5	5-5/8	5-5/8	2-7/16	3-1/4	3-5/32	5-5/8	5-3/8	17-15/16	2-7/8	1/2
MDT-3S	8	5-5/8	5-5/8	2-7/16	3-1/4	3-5/32	5-5/8	5-3/8	18-5/8	4-3/8	3/4
MDT-3S	10	5-5/8	5-5/8	2-7/16	3-1/4	3-5/32	5-5/8	5-3/8	19-9/16	5-1/2	3/4
MDT-4S	5	8	6-3/8	2-27/32	3-3/8	4	7-5/16	6-3/4	21-1/4	2-7/8	1/2
MDT-4S	8	8	6-3/8	2-27/32	3-3/8	4	7-5/16	6-3/4	21-15/16	4-3/8	3/4
*MDT-4S	10	8	6-3/8	2-27/32	3-3/8	4	7-5/16	6-3/4	22-7/8	5-1/2	3/4
*MDT-4S	12	8	6-3/8	2-27/32	3-3/8	4	7-5/16	6-3/4	27-3/8	6-9/16	1
MDT-5	6	11	7-9/16	3-15/32	4-1/2	5-1/2	8-3/4	10	27-7/8	3-3/8	3/4
MDT-5	8	11	7-9/16	3-15/32	4-1/2	5-1/2	8-3/4	10	28-3/4	4-3/8	3/4
MDT-5	10	11	7-9/16	3-15/32	4-1/2	5-1/2	8-3/4	10	30-5/8	5-1/2	3/4
MDT-5	12	11	7-9/16	3-15/32	4-1/2	5-1/2	8-3/4	10	32	6-9/16	1
MDT-5	14	11	7-9/16	3-15/32	4-1/2	5-1/2	8-3/4	10	32	7-7/16	1

10/10/05	RCB	CEG	3-7/8 WAS 3-1/4, 4-1/8 WAS 3-1/2				
02-09-04	BB	CEG	NOTE 7 ADDED	4/28/23	RTF	RF	UPDATED TITLE BLOCK & REMOVED REV 2
REV.-DATE	BY	APP.	REVISION	REV.-DATE	BY	APP.	REVISION