

PRATT®

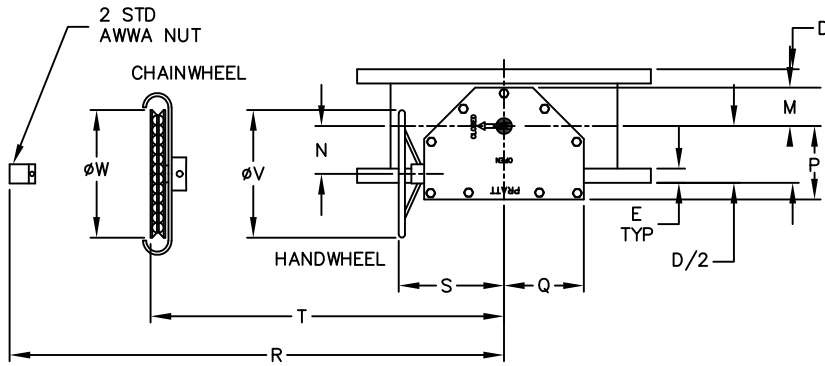
a MUELLER brand

GENERAL ARRANGEMENT DRAWING MODEL 2FII FLANGED BUTTERFLY VALVE MDT MANUAL ACTUATOR W/ REPLACEABLE PACKING BONNET

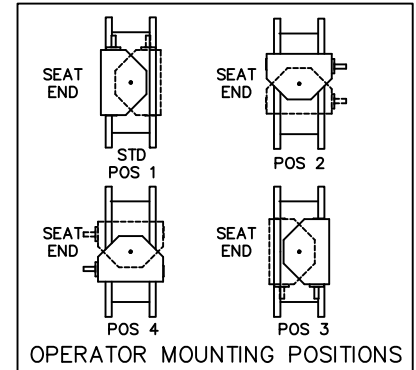
DRAWING NO.
S-2008

DATE
05-07-01

BY APP.
MJH DWB



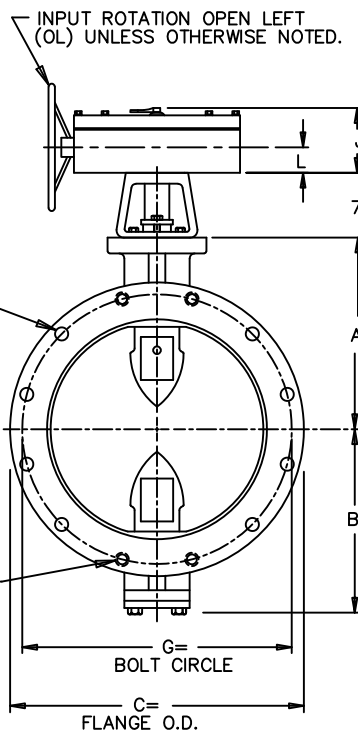
ACTUATOR POSITION 1



- A. IGNORE SEAT SIDE DESIGNATION ON BFV SIZE 3" - 20"
- B.
- C. CHECK WITH FACTORY WHEN SELECTING ALTERNATE MIRROR ACTUATOR STYLES.

F = NO. & SIZE OF BOLTS
125# STANDARD LAYOUT
STRADDLE CENTERLINE
INCLUDES TAPPED HOLES
EACH FLANGE

TAPPED HOLES "F" UNC 2B X E DEEP VALVE SIZE	NO. TAPPED HOLES (EACH FLANGE)
3"-16"	ALL THRU HOLES
18" & 20"	2-TOP; 2-BOTTOM



NOTES:

1. ALL DIMENSIONS SHOWN IN INCHES.
2. "D" DIMENSION $\pm 1/16"$ FOR 3" THRU 10" VALVES.
"D" DIMENSION $\pm 1/8"$ FOR 12" THRU 20" VALVES.
3. FOR BOLTS SMALLER THAN $\phi 1-3/4$, BOLT HOLES WILL BE $1/8"$ LARGER THAN DIAMETER OF BOLT.
FOR BOLTS $\phi 1-3/4$ OR LARGER, BOLT HOLES WILL BE $1/4"$ LARGER THAN DIAMETER OF BOLT.
4. DIMENSIONS AND DRILLING OF END FLANGES CONFORM TO THE AMERICAN CAST IRON FLANGE STANDARDS, CLASS 125 (B16.1).
5. VALVES MANUFACTURED & TESTED IN ACCORDANCE WITH AWWA SPECIFICATION C-504 LATEST REVISION, CLASS 150B.
6. RECOMMENDATION FOR MATING FLANGES: WHERE INSULATING BUSHINGS ARE USED, IT IS NECESSARY THAT BOLT HOLES BE DRILLED OVERSIZE BY AN AMOUNT EQUAL TO TWO TIMES THE INSULATING SLEEVE THICKNESS TO MAINTAIN THE SAME MINIMUM CLEARANCE FOR BOLTS.

VALVE SIZE	A	B	C	D	E	F	G
3	4-3/4	3-1/4	7-1/2	5	3/4	4--5/8	6
4	5-1/2	3-1/2	9	5	15/16	8--5/8	7-1/2
6	6-1/2	5-1/8	11	5	1	8--3/4	9-1/2
8	7-3/4	6-1/2	13-1/2	6	1-1/8	8--3/4	11-3/4
10	9	9-7/8	16	8	1-3/16	12--7/8	14-1/4
12	10-1/2	11-3/8	19	8	1-1/4	12--7/8	17
14	11-7/8	12-3/4	21	8	1-3/8	18--1	18-3/4
16	13-1/2	14-3/8	23-1/2	8	1-7/16	16--1	21-1/4
18	14-3/8	15-1/4	25	8	1-9/16	16--1-1/8	22-3/4
20	16	16-7/8	27-1/2	8	1-11/16	20--1-1/8	25

ACTUATOR SIZE	J	L	M	N	P	Q	R	S	T	V	W	NUMBER OF TURNS
MDT-2S	4-11/16	2	2-1/8	2	4-1/2	4-1/4	8-1/4	7-7/8	7-7/8	8	9-1/8	32
MDT-3S	5-5/8	2-7/16	3-1/4	3-5/32	5-5/8	5-3/8	10-3/8	10-1/2	10-1/8	12	9-1/8	30
MDT-4S	6-3/8	2-27/32	3-3/8	4	7-5/16	6-3/4	11-5/16	11-1/2	11	12	9-1/8	40
MDT-5	7-9/16	3-15/32	4-1/2	5-1/2	8-3/4	10	17	17 3/16	17-3/16	18	16-7/16	44

02/27/07	CEG	JR	CORRECED NOTE	04/28/23	RTF	RF	UPDATED TITLE BLOCK
10/10/05	RCB	CEG	3-7/8 WAS 3-1/4, 4-1/8 WAS 3-1/2, ECO 1352251	04/12/11	JLM	RCB	REMOVING CHANGES FROM ECO 1352251.
REV.-DATE	BY	APP.	REVISION	REV.-DATE	BY	APP.	REVISION