

- Dimensions in inches unless otherwise noted.

SIZE Ød in. mm.	L	ANSI B16.1 CL. 125						A	B	K	D	P	Q	R	S	U	V	ØM	n1	Cover Bolt Size (in) x (mm) (1)	No. of Bolts (1)	Cover Bolt Size (in) x (mm) (2)	No. of Bolts (2)	Approx Weight (Lbs.)	Plug Size	Boss Diameter
		ØD	ØC	Øh	n	T																				
2 50	8±1/16	6	4 3/4	3/4	4	3/8	5.19	4.85	6.30	3.08	0.87	2.03	2.03	4.31	1.81	2.60	-	-	1/2-13 x 50	2	1/2-13 x 35	2	25	3/4	1	
2 1/2 65	8 1/2±1/16	7	5 1/2	3/4	4	1/2	6.75	4.92	6.30	2.86	0.55	1.44	1.44	5.00	1.87	3.39	-	-	1/2-13 x 50	2	1/2-13 x 35	4	32	3/4	1	
3 80	9±1/16	7 1/2	6	3/4	4	3/4	7.40	5.14	6.69	3.80	0.59	1.87	1.87	5.45	1.89	3.76	-	-	1/2-13 x 50	2	1/2-13 x 35	4	41	3/4	1	
4 100	11±1/16	9	7 1/2	3/4	8	1 1/16	9.02	5.86	7.68	4.72	0.98	2.51	2.51	6.26	2.51	4.55	-	-	1/2-13 x 50	2	1/2-13 x 38	4	63	1	1.25	
6 150	14±1/16	11	9 1/2	7/8	8	1	11.02	7.60	8.86	5.83	1.42	3.01	3.01	7.99	3.01	5.43	ØM x 10TPI	6	1/2-13 x 55	2	1/2-13 x 40	10	103	1 1/4	1.25	
8 200	19±1/16	13 1/2	11 3/4	7/8	8	1 1/8	14.17	8.85	10.24	7.90	1.61	4.23	4.23	10.81	4.23	7.09	-	-	5/8-11 x 65	2	5/8-11 x 45	10	182	1 1/4	1.25	
10 250	24±1/16	16	14 1/4	1	12	1 3/16	19.60	11.80	14.17	10.71	2.17	4.34	4.34	14.21	4.34	9.74	-	-	7/8-9 x 110	2	7/8-9 x 65	10	445	2	2.75	
12 300	27±1/16	19	17	1	12	1 1/4	21.26	13.23	15.75	10.74	2.17	4.61	4.61	15.72	4.61	10.63	-	-	7/8-9 x 100	2	7/8-9 x 65	10	488	2	3.38	
14 350	31±1/16	21	18 3/4	1 1/8	12	1 1/2	25.83	14.57	16.93	15.49	2.95	4.84	4.84	18.44	4.84	12.91	-	-	1-8 x 100	2	1-8 x 80	10	685	2	3.38	
16 400	36±1/16	23 1/2	21 1/4	1 1/2	16	1 7/16	25.20	15.40	18.50	14.59	4.33	8.39	8.39	17.99	8.39	12.60	-	-	1-8 x 120	2	1-8 x 80	10	847	2	3.38	

CAST MARK:

PRATT

SIZE (INCH)

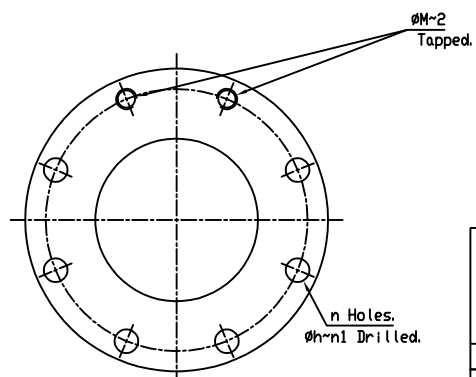
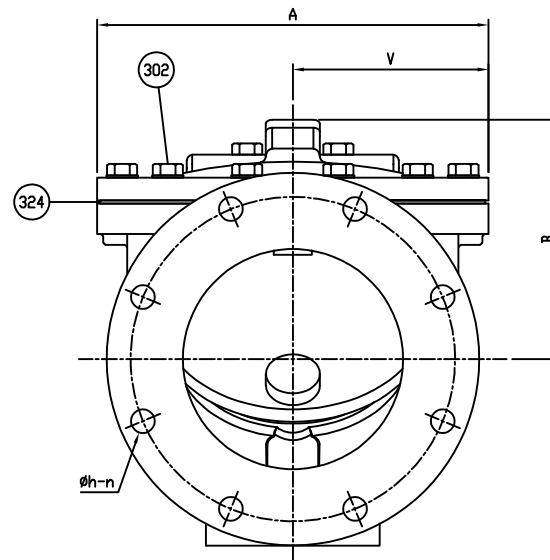
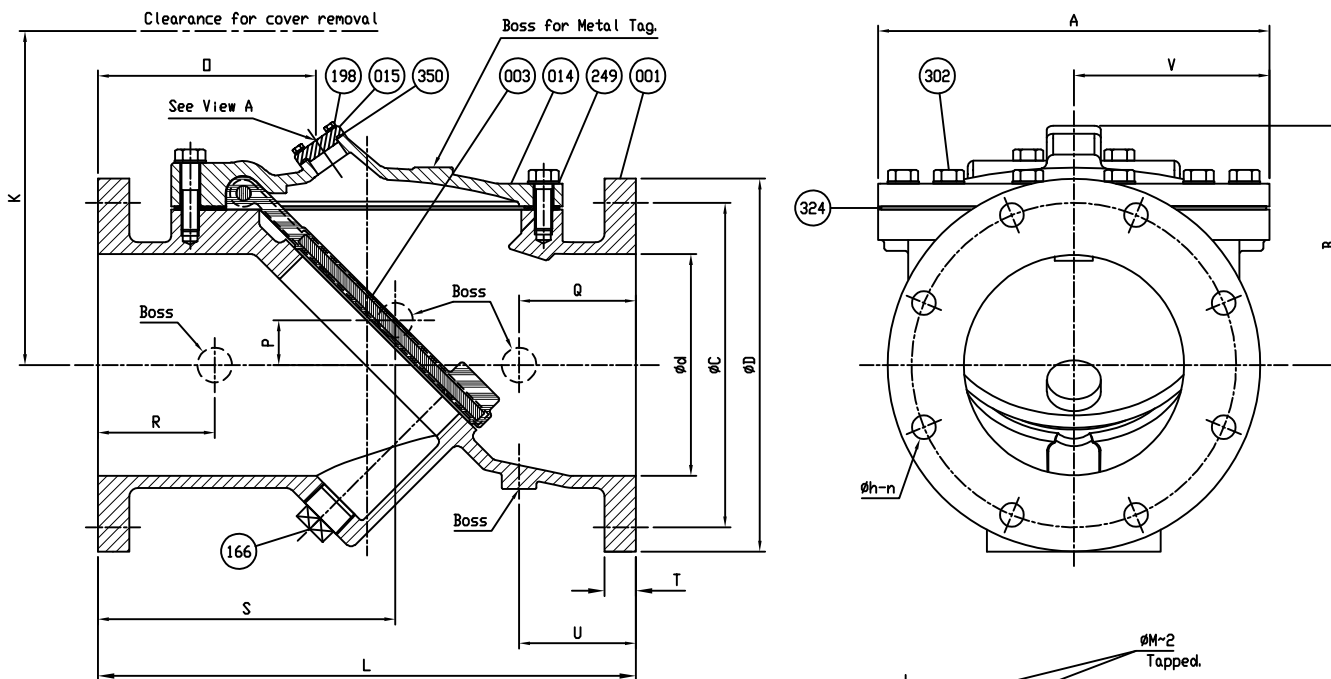
250 PSI

FIG. 851

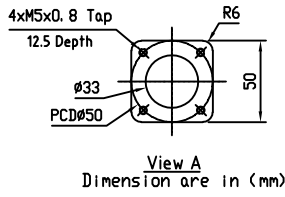


MUELLER

POURING DATE



Detail of flange for size 6" (150) only.



Remark - Seven Bosses

NO.	PARTS	MATERIAL	ASTM DESIGNATION.	Q'TY
302	Cover Bolt	<input type="checkbox"/> Galvanized Steel <input type="checkbox"/> 316SS <input type="checkbox"/> Hastelloy	A307 Grade B (Standard) ASTM A193 Grade 88M (Optional) C276 (Optional for AIS)	1set
350	O-Ring A	<input type="checkbox"/> Rubber (EPDM) <input type="checkbox"/> Rubber (BUNA-N)	ASTM D2000 CA707 (Optional) D 2000 BK 707 (Standard)	1
324	Cover Gasket	<input type="checkbox"/> Rubber (EPDM) <input type="checkbox"/> Rubber (BUNA-N)	ASTM D2000 CA807 (Optional) D 2000 BK 707 (Standard)	1
249	Washer	<input type="checkbox"/> Galvanized Steel <input type="checkbox"/> 316SS <input type="checkbox"/> Hastelloy	A307 Grade B (Standard) ASTM A193 Grade 88M (Optional) C276 (Optional for AIS)	1set
198	End Plate Bolt	Galvanized Steel	A 307 Grade B	1set
166	Plug	Stainless Steel	A 276 Type 304	1
015	End Plate	Ductile Iron	A 536 Gr. 65-45-12	1
014	Cover	Ductile Iron	A 536 Gr. 65-45-12	1
003	Disc	<input type="checkbox"/> Rubber (EPDM) <input type="checkbox"/> Rubber (BUNA-N)	ASTM D2000 CA707 (Optional) D 2000 BK 707 (Standard)	1
001	Body	Ductile Iron	A 536 Gr. 65-45-12	1
ND.	PARTS	MATERIAL	ASTM DESIGNATION.	Q'TY

MATERIAL LIST			
HYDRO SHELL			500 PSI.
HYDRO VALVE SEAT			250 PSI.
TEST PRESSURE			
WORKING PRESSURE			250 PSI.

ISSUE NUM.	DATE	REVISIONS	BY	CHK	TITLE	BY:	DATE:	SCALE:	
						CA	07/24/20	NONE	
1	10/11/21	UPDATED FACE TO FACE DIM FOR 6" VALVE FROM 12" TO 14"	CA	PJ	2'-16' FIG. 851 FLEX CHECK VALVE 250PSI, ANSI 125 FLANGES	CHK'D BY:	DIMENSION:	REF DWG.	
2							INCHES	USA2705F	
3									
4									
						DWG. NO.	HP50675		